

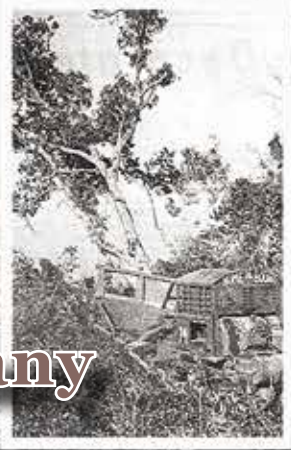
November 2024

NEW

CONSTRUCTION

Products

The 60th Land
Clearing Company
'Jungle Eaters'



ROME

Manufacturing Heavy Duty Construction
and Agricultural Equipment Since 1932

Available in 10, 12, 14, and 16 foot widths



Available in 16, 18, 20, 24, and 30 foot widths



Available with 36 or 42" blades, and up to 20' wide



Available in 18 and 22 yard versions

Available in 24, 28, 31, 34 and 37 Yards



Steel Tracks available to fit any articulating tractor.

ROME Plow has been the premier name in heavy duty disc plows for over 87 years.

ROME has been manufacturing pivot dump and ejector scrapers for over 45 years for the construction and agricultural industries.

ROME also manufactures a full line of leveling scrapers (with and without gates) and haul road maintenance tools (with and without rollers)

For more information on our products or for the closest authorized ROME dealer please contact us.

“When Disasters Strike, First Responders Rely On Us!”

Our complete control, communication and convenience Utility Truck Console is becoming the new standard for truck fleets of all sizes. Loaded with standard and optional features that maximize ergonomics, productivity, and fleet/telecom standards into a one exceptional Mobile Console Solution.



MOBILE DESK
MOBILE OFFICE SOLUTIONS
1-877-663-3375
www.mobiledesk.com

PG 4	The 60th Land Clearing Company 'Jungle Eaters'
PG 10	Land Clearing
PG 20	Ad Index



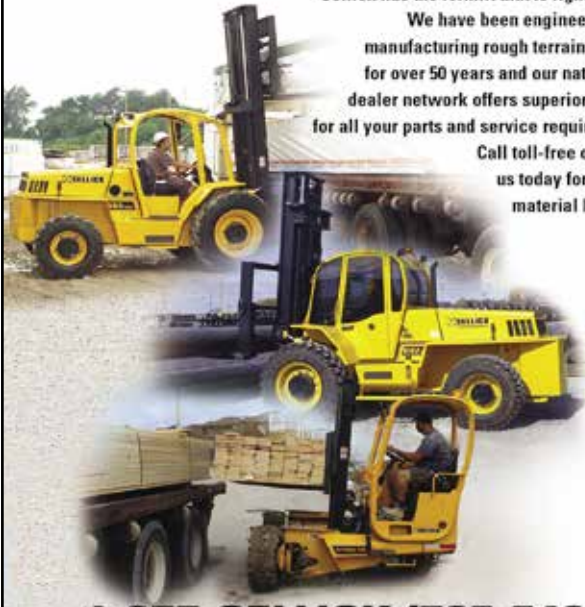
Pg 4

SELICK LIFT, LOAD AND DELIVER WITH SELICK!

Whether you need to deliver a skid of blocks to a jobsite or move a 16,000 lb. load of steel, Selick has the forklift that is right for you.

We have been engineering and manufacturing rough terrain forklifts for over 50 years and our nationwide dealer network offers superior support for all your parts and service requirements.

Call toll-free or e-mail us today for all your material handling needs.



1-877-SELICK (735-5425)
sales@selickequipment.com

PRESIDENT

Glen Hobson
 205-441-5591
 glen@handfmedia.net

DIRECTOR OF ADVERTISING

Brian Lockheart
 205-624-2182
 lockbrian692@gmail.com

DIRECTOR OF BUSINESS

Butch Cole
 205-624-2180
 butch@handfmedia.net

ADMINISTRATIVE DIRECTOR

Steven Hobson
 steven@handfmedia.net

EDITOR

Brandon Greenhill
 brandon@handfmedia.net

CREATIVE/ WEB DIRECTOR

Jacklyn Greenhill
 jacklyn@handfmedia.net

P.O. Box 1568 • Pelham, AL 35124
 Phone: 205-441-5591 • Fax: 205-624-2181
 www.newconstructionproducts.com
 info@newconstructionproducts.com



New Construction Products™ is published twelve times a year on a monthly basis by Southern Digital Publishing, Inc. *New Construction Products™* is distributed free to qualified subscribers. Non-qualified subscription rates are \$57.00 per year in the U.S. and Canada and \$84.00 per year for foreign subscribers (surface mail). U.S. Postage paid at Birmingham, Alabama and additional mailing offices.

New Construction Products™ is distributed to qualified owners and managers in the construction industry. Publisher is not liable for all content (including editorial and illustrations provided by advertisers) of advertisements published and does not accept responsibility for any claims made against the publisher. It is the advertiser's or agency's responsibility to obtain appropriate releases on any item or individuals pictured in an advertisement. Reproduction of this magazine in whole or in part is prohibited without prior written permission from the publisher.

POSTMASTER: Send address changes to
 Southern Digital Publishing, Inc. P.O. Box 1568
 Pelham, AL 35124
PRINTED IN THE USA

LONE WORKER PROTECTION
FALL PROTECTION
SUSPENSION TRAUMA PREVENTION

SECURE 1/2 MILE
LINE-OF-SIGHT



ASSIGNED MONITORING ATTENDANTS



Grace Web Portal Dashboard



Custom Check-In Schedule



TEXT/Email Notification



Receive a GPS Map Link



Check-In System



LEARN MORE



GRACE GATEWAYS

Iridium Satellite/Cellular
Mobile or Portable Worksite Models
SALTI™ System Loop Test Indicator
Supports up to 20 Grace Pendants



WORKFORCE® LONE WORKER PENDANT

Fall Detection
Manual Panic Button
Motion Detection
GPS Location





The 60th Land Clearing Company 'Jungle Eaters'



Choking dust, clouds of stinging insects, biting monkeys, trees and enemy rockets crashing from above, tunnels collapsing underfoot— in temperatures reaching 130 degrees—were all in a day's work for the 60th Land Clearing Company, which carried out its missions undaunted, guided by the unit motto, "Guts, Skill and Spirit." Largely unheralded and forgotten, land clearing units, in Vietnam nicknamed "Jungle Eaters," were often ahead of the frontlines, destroying the enemy's most valued weapon—heavy cover—and blazing the way for infantry and armor.

The nearly impenetrable triple-canopy jungle that covered much of Vietnam presented a great challenge to the U.S. military. The enemy used the jungle to conceal large complexes and staging areas for assaults and ambushes, especially along convoy routes. The United States needed to find a way to neutralize that advantage.

One option was to use defoliants, including Agent Orange. The dioxin-based chemicals were sprayed over large swaths of Vietnam by C-123 Provider aircraft. That method made it possible to reach areas of the country inaccessible by ground, but it took time for the chemicals to kill the vegetation.

Another option was the Rome Plow, known as "hog jaws." This was the military version of a Caterpillar bulldozer outfitted with a 12½-foot-wide, 6-foot-high, 2½-ton blade manufactured by the Rome Plow Company of Rome, Ga. A reinforced steel protective cage was mounted on top of each vehicle, with a "headache bar" over the operator's head to protect him from falling

debris. The 36,000-pound monster plow, originally used to cut fire breaks in American forests, made its Vietnam debut in 1966. By the summer of 1967, there were three teams of 30 plows each working in Vietnam. The teams were later reorganized as companies, and by January 1969 six companies were busy clearing jungle and forests in Vietnam.

Choking dust, clouds of stinging insects, biting monkeys, trees and enemy rockets crashing from above, tunnels collapsing underfoot— in temperatures reaching 130 degrees—were all in a day's work for the 60th Land Clearing Company, which carried out its missions undaunted, guided by the unit motto, "Guts, Skill and Spirit." Largely unheralded and forgotten, land clearing units, in Vietnam nicknamed "Jungle Eaters," were often ahead of the frontlines, destroying the enemy's most valued weapon—heavy cover—and blazing the way for infantry and armor.

The nearly impenetrable triple-canopy jungle that covered much of Vietnam presented a great challenge to the U.S. military. The enemy used the jungle to conceal large complexes and staging areas for assaults and ambushes, especially along convoy routes. The United States needed to find a way to neutralize that advantage.

One option was to use defoliants, including Agent Orange. The dioxin-based chemicals were sprayed over large swaths of Vietnam by C-123 Provider aircraft. That method made it possible to reach areas of the country inaccessible by ground, but it took time for the chemicals to kill the vegetation.

Another option was the Rome Plow, known as “hog jaws.” This was the military version of a Caterpillar bulldozer outfitted with a 12½-foot-wide, 6-foot-high, 21½-ton blade manufactured by the Rome Plow Company of Rome, Ga. A reinforced steel protective cage was mounted on top of each vehicle, with a “headache bar” over the operator’s head to protect him from falling debris. The 36,000-pound monster plow, originally used to cut fire breaks in American forests, made its Vietnam

debut in 1966. By the summer of 1967, there were three teams of 30 plows each working in Vietnam. The teams were later reorganized as companies, and by January 1969 six companies were busy clearing jungle and forests in Vietnam.

In January 1967, the Army launched Operation Cedar Falls, an effort to destroy a Viet Cong jungle fortress called the “Iron Triangle.” For 20 years the VC and the Viet Minh before them used the 40-square mile area

just 20 miles northwest of Saigon as a staging ground for attacks on the city.

The war’s largest operation to date, Cedar Falls was supported by 600 men and 54 bulldozers, including four Rome Plows from the 1st Engineering Battalion. In this operation the plows formed up with two M48 tank dozers at the point, followed by four bulldozers abreast, with two more trailing as a cleanup team. They cleared resupply landing zones, stripped vegetation from along roadways, cut swaths in the jungle to facilitate rapid deployment of armor, and destroyed bunkers and tunnel complexes.

Lieutenant Colonel Joseph Kiernan, commander of the 1st Engineering Battalion, called Cedar Falls the “most significant combat engineering operation of the war to date.” During the 19-day operation, as some 2,700 acres of land were cleared, maintenance problems emerged as the weak link of mechanical land clearing.

Three years later, Rome Plows played a big role in the April 1970 incursion into the Fish Hook area of Cambodia, about 50 miles north of Saigon. On the first day of the operation, the 60th Land Clearing



An ounce of prevention is worth a pound of cure



Line Guard | Pole Guard | BirdBloc
Learn More at CriticterGuard.org



Company ate up nearly 77 acres of jungle and in the process exposed 50 bunkers and a 20-ton cache of rice. Just before noon on the third day, having cleared another 70 acres, the 60th received an order to stop. Ahead of them was a huge, one-square-kilometer bunker complex.

When Staff Sgt. Richard Koutch got off his tractor and looked around, he saw laundry drying on the lines and kettles of rice cooking. He found medical supplies in one bunker. When he turned from another bunker and saw 20 North Vietnamese Army soldiers about 30 feet away, the unit's engineers scattered. The 11th Armored Cavalry Regiment then attacked the complex with F-4s and helicopter gunships providing close air support, securing the area after a five-hour pitched battle. The plows were back in action the next day, destroying 75 bunkers and 50 hooches of what turned out to be the largest NVA hospital complex in Cambodia.

The commander of the 1st Engineering Battalion at that time, Lt. Col. Robert Montfore, called the men of the 60th very heroic. "We took absolute control and put the run to the enemy," Montfore recalled.

Typically, a land clearing company was sent into the field for 45 days, followed by a standard 15-day maintenance stand-down period at its base of operations. The Jungle Eaters worked 12-hour days when they were in the field— clearing as much as 150 to 200 acres. At the end of the day, they turned up a defensive berm and laagered in for the night. After evening chow, they spent another four to six hours each night pulling maintenance on their rigs.

The tough terrain, enemy mines, and near-nightly mortar attacks put a heavy toll on the equipment: between one-half and two-thirds of the plows were out of action at any given time. Since most of the areas they worked in were often isolated and inaccessible by road, spare parts, water, and food had to be flown in by CH-47 Chinooks.

When entering the virgin territory, it was often impossible to identify readily concealed terrain features or an

Low-Dust Application of Stabilization Materials

Fast, Accurate and Consistent!



Truck Mounted



Pull-Type



Custom Sizes

- Spreads all dry binding agents accurately
- Spread rates up to 120 lb/sq. yd.
- Available in manual or automatic rate control with Stoltz Controller

Used for Soil Stabilization, Cold In-Place Recycling, Full Depth Reclamation, and similar construction processes, Site Spreaders feature a rugged, fully welded design, 30 inch conveyor, and either automatic or manual controls.



1-800-843-8731
Get all the details you need at
www.stoltzfusspreaders.com

enemy presence. Initially, a single plow equipped with a radio would score the perimeter of the planned cut, with a chopper hovering above, radioing directions to the plow operator and ready to respond to any emergencies. Once the perimeter was traced, the other plows joined up in an echelon formation with the lead dozer and cut in a concentric manner until the clearing was completed. Other plows pushed the debris to the side.

While their human enemies were the most deadly, the jungle was replete with hazards of all sorts and species. One of the most persistent animal foes the Jungle Eaters encountered was the Vietnamese bee. Once disturbed, swarms of bees descended upon the dozers. All of the armor and reinforced protective cages did nothing to stop the stinging insects; the only defense that seemed to work was popping a can of green smoke.

Eighteen-year-old Allen Boehm from Amelia, Ohio, joined the 60th near Trang Bang in Hau Nghia Province in November 1970. The mischievous Boehm was a nat-

ural fit with the Jungle Eaters, a “good old boy,” according to Sergeant Bill Kimbrell. “He worked hard, did what he was asked, and got a beer or two.”

In late April 1971, the 60th was again near Trang Bang and the men were uneasy. Their traditional operating cover, the 11th Armored Cavalry Regiment, had been redeployed Stateside and was replaced by an untested ARVN unit. During the night of April 23, the engineers’ position came under heavy recoilless rifle and machine gun fire. The ARVN unit ran. Despite the lack of protection, the plows started up again the next morning. They were working to clear a bamboo patch when they were attacked on three sides and a B-40 rocket slammed into one tractor.

As Boehm rushed to the aid of the driver of the disabled vehicle, his own dozer was hit by a rocket and erupted in flames. Seriously injured with multiple fragmentation wounds to his head, neck, and extremities, Boehm was dusted-off by chopper to the 24th Evacuation Hospital in Long Binh, where he died shortly thereafter.

The company was ordered back to the battle site to recover Boehm’s burned-out dozer. As the men approached the derelict vehicle, the VC attacked them again. During the fight Captain Edwin Heisse, Lieutenant Kevin Richard and medic James Harris were also killed, making April 24, 1971, the deadliest day in the history of the 60th Land Clearing Company. Boehm was posthumously awarded the Bronze Star Medal with Oak Leaf Custer and V Device.

As with other U.S. units, the Rome Plow companies were gradually replaced by South Vietnamese units. The 60th was ordered home in December 1971, the last U.S. plow company to redeploy.

Colonel Montfore has estimated that during its service in Vietnam the 60th Land Clearing Company succeeded in clearing between 150,000 and 200,000 acres of the jungle—suffering 27 combat deaths in the process. What can never be calculated, however, is the number of American infantry casualties that were prevented by the work of the 60th. •

Get Cool!

Extend transformer life!

Increase transformer capacity up to 166%!

- expert technical assistance
- low sound levels
- energy-efficient motors
- large inventory
- one-piece cast aluminum blades
- galvanized or stainless steel guards

KRENZ-VENT
quality engineered, performance tested

p.o. box 187 germantown, wisconsin 53022 262.255.2318 www.krenzvent.com

THE SECRET TO

UNDERGROUND POWER TRANSMISSION



OUR WUNPEECE TRANSMISSION SPACERS REDEFINE THE INDUSTRY STANDARD FOR UNDERGROUND POWER TRANSMISSION INSTALLATIONS. WITH PRECISION ENGINEERING AND UNMATCHED QUALITY,

JOIN THE RANKS OF INDUSTRY LEADERS WHO TRUST UNDERGROUND DEVICES FOR THEIR POWER TRANSMISSION NEEDS.



VISIT WWW.UDEVICES.COM

AND EXPERIENCE THE FUTURE OF UNDERGROUND POWER INSTALLATION



Land clearing was another important job of the engineers in their operational support role; in fact, engineer methods of land clearing gained wide acceptance as among the most effective tactical innovations of the war. As techniques evolved for the employment of land-clearing units, these units more and more became the key elements in successful operations aimed at penetrating enemy strongholds, exposing main infiltration routes, denying areas of sanctuary, and opening major transportation routes to both military and civilian traffic. Engineer land-clearing troops on many occasions formed the vanguard of assault forces attacking heavily fortified enemy positions, while even under ordinary circumstances their use in clearing the jungle ahead of tactical security elements placed them routinely in a position of direct vulnerability to enemy action. These engineer troops rapidly developed a zestful pride in the importance, difficulty, and hazards of their occupation, and while their department and appearance sometimes fell short of normal standards, their spirit, courage, and persistence under the most adverse conditions entitled them to a substantial claim to elite status.

In the vocabulary of U.S. forces in Vietnam, Rome Plow came to be synonymous with land clearing. Of all the various types of land-clearing equipment tested in Vietnam, the military standard D7E tractor, equipped with a heavy-duty protective cab and a special tree-cutting blade manufactured by the Rome Company of Rome, Georgia, proved to be by far the most versatile and effective. The tractor took its name from its most imposing feature—the huge blade on the front.

The giant Rome Plow blade was designed to move over the ground six inches above the surface, shearing off most of the vegetation but leaving the root structure to prevent erosion. The blade has a leading knife-edge that was sharp-



RHINO

SWITCHBOARD MATS

FUSEBOX SAFETY MAT™

Rhino Switchboard Mats For The "If" in Life.

Easily carried to job or construction sites, **Fusebox Safety Mat™** by Rhino provides portable insulation when working in close proximity to exposed energized equipment. around substations, transformers, switches, electrical panels, or high-voltage equipment. **Fusebox Safety Mat™** should be used in any area where Health and safety risk assessment shows a possibility of high-voltage shock.

Safety Focused. Results Driven

Rubber-insulating gloves, insulated hand tools, and switchboard-insulating mats are vital components of a successful PPE system. All should be used in conjunction with engineering safeguards and associated work practices.

Quality You Can Count On

All are tested to ASTM D178/ANSI J6.7 specifications with

certification printed on the back.

Two sizes available 2ft X 3ft and 3ft X 3ft,

Two thicknesses 1/2" and 1/4"

Available at most Electrical and

Safety Supply Houses,

ask for Rhino **Fusebox Safety Mat™**,

Home Depot online or

contact us at

713-228-5543 / Info@rhinomats.com

www.rhinoswitchboardmats.com

Extreme-Duty Series Class 4
1/2" thick Corrugated Surface
Test Voltage 50,000 VAC
Proof Test 40,000 VAC
Recommended 36,000 VAC



Heavy-Duty Series Class 2
1/4" thick Diamond Surface
Test Voltage 30,000 VAC
Proof Test 20,000 VAC
Recommended 17,000 VAC



ened by a portable grinder at least once daily. It is slightly angled so that cut material is discarded to the right. The leading corner of the blade is extended by a rigid "stinger" with which the operator attacks the larger trees by a succession of stabbings and dozer turnings.

The potency of the Rome Plow was early recognized by the troops in the field. Lieutenant General Julian J. Ewell, commander of II Field Force, was so impressed that he was led to remark that the Rome Plow Was "the most effective device" for winning the war. It played a substantial role not only in achieving military success but also in building the South Vietnamese economy through land clearing for redevelopment purposes.

An integral part of the land-clearing operation was aimed at improving security along roadways. No road, no matter how well constructed, was of much value if enemy interdiction made the use of it too hazardous. Wherever a highway passed through the jungle or heavy brush in areas subject to enemy activity, the land had to be cleared on either side for distances up to a hundred meters. The Rome Plow was the principal tool in these clearing operations. When the cover provided by the brush was removed, it was difficult for the enemy to stage an ambush. In addition, the land cleared by the plows was often fertile enough for farmers to move in and cultivate.

The story of how Rome Plow reached the U.S. Army in Vietnam and came to be one of its most effective weapons merits recounting. U.S. Military leaders had recognized early the tremendous advantage the jungle offered the Viet Cong and North Vietnamese Army in terms of limiting the movement of firepower of the modern military equipment employed against them and in protecting their bases, their lines of communication, and their arsenals. As early as November of 1965 General Westmoreland put his staff to work looking for means of jungle clearing. An officer was dispatched to Australia where success had been reported with a ten-ton or heavier hollow ball approximately twelve feet in diameter towed by ship anchor chains linked to a pair of very heavy tractors. This towed ball worked well in the Australian jungle, but when attempts were made in Vietnam to fabricate some sets of balls and chains, the large size of the ball, the difficulty of transporting it, and inadequate equipment stood in the way of early success. Suggestions from the United States meanwhile included a 100-ton tracked tank like vehicle, the three-wheeled LeTourneau tree-crusher, and a Rome

Plow attachment for military tractors. A small number of tractors with Rome Plow attachments and accessories were ordered at once. Within hours after they had arrived, been assembled, and been hurried through field tests, large orders for Rome Plow kits were under preparation. While awaiting delivery, the test models in South Vietnam were put to immediate use and organizational training and operating plans were developed. The 100-ton tank was rejected as too hard to move; getting it from ship to shore in South Vietnam and subsequently to the jungle would have created impossible problems.

The LeTourneau tree-crusher was also originally rejected, even though it was capable of being broken down into four or five pieces for shipment. Flotation characteristics were appealing, but it was only marginally effective in the water. Although it weighed sixty tons, it was less trouble to move than some other proposed devices, but it was vulnerable- a target too big to miss in a tactical situation; a complex, though well-protected hydraulic system; and little prospect of extracting the machine if it became dead-lined in the middle of the jungle. Nevertheless, the commanding general of the 1st Logistical Command arranged for rental and shipment of a test model to the Long Binh area. In the early spring of 1967, the treecrusher proved its ability to perform in a swampy jungle; however, it was not reliable enough in South Vietnam and was returned to the United States when the lease expired.

The Rome Plow meanwhile had already fully demonstrated its suitability in major tactical operations. By the summer of 1967 three land-clearing platoons (or teams as they were called at that time) were operating in Vietnam, each equipped with thirty Rome Plows. Two platoons were assigned to the 20th Engineer Brigade, which was supporting II Field Force, and the third was assigned to the 18th Engineer Brigade, which was deployed in I Field Force. In addition, land clearing on a lesser scale was carried out by other engineer units throughout Vietnam, particularly by the divisional engineer combat battalions.

As the intensity of U.S. involvement in the conflict increased, the requirement for additional land-clearing units became apparent. The need for organizational changes was also recognized since many tactical units to which land-clearing teams were attached experienced an almost traumatic drain on their command, administrative, and, particularly, their maintenance capabilities. With only sixty-four men, a land-clearing team could contribute



Reliable and Safe. The Power of Us.

40+ OFFICES
ACROSS THE U.S. & CANADA

- ⚡ Electrical Testing and Maintenance
- ⚡ Commissioning and Start-Up Testing
- ⚡ Power Quality Analysis
- ⚡ Cable Testing and Fault Location
- ⚡ Online and Offline Cable Partial Discharge Testing
- ⚡ Engineering Services
- ⚡ Electrical Safety Training
- ⚡ Renewable Energy Systems Testing
- ⚡ Power Distribution System Testing
- ⚡ Power System Troubleshooting and more...



SERVICES

TRANSFORMERS

SYSTEMS

COMPONENTS



resapower.com



Network with us on LinkedIn and follow us on social media as we routinely publish the most recent company news, share best practices, post open jobs, and more.



SCAN ME

GOT A TOUGH ONE?



800-576-RESA



sales@resapower.com

little more than a complement of operators for its thirty Rome Plows under the operational conditions that existed. Consequently, in December 1968 the three land-clearing teams were reorganized as companies with thirty Rome Plows each and were also provided with a significantly better capacity for self-support, particularly in maintenance. One month later, in January 1969, three additional land-clearing companies were activated, bringing the total to six, a number that was maintained until April 1970 when one of the companies was inactivated under the terms of the phase-down.

Three of the land-clearing companies were assigned to the 20th Engineer Brigade and three to the 18th Engineer Brigade. The 20th Engineer Brigade area of operation included large, reasonably level tracts in III Corps Tactical Zone that were occupied by major enemy units. These areas were particularly in need of land-clearing operations; furthermore, the roadnets were adequate for the large convoys of heavy tractor-trailers which transported land-clearing companies from a central base to the cutting area. These factors were prominent in the decision to organize a land-clearing battalion that would incorporate the three land-clearing companies of the 20th Engineer Brigade. The 62d Engineer Battalion based at Long Binh was selected for this purpose. Its lettered construction companies were inactivated, and in January 1969 the 62d was assigned the 60th, the 501st, and the 984th Engineer Companies (Land Clearing) to perform the mission of land-clearing operations in support of II Field Force.

The 18th Engineer Brigade supporting I Field Force in Military Regions I and II were faced with a different situation. Although objectives were plentiful enough in the form of enemy strongholds, the terrain was severely restrictive and so were the roadnets. Therefore the 59th, 538th, and 687th Engineer Companies (Land Clearing) were employed and supported on the basis of a geographic area of responsibility, with one company assigned to each of three engineer groups. Regardless of the method of deployment, land-clearing operations were closely controlled by the field force commander concerned. Since requests for Rome Plows far exceeded their availability, high-level control was essential to assure that the land-clearing unit was used only for tasks of the highest priority. Much was learned from the employment of the original landclearing platoons on large-scale clearing operations in 1967. Techniques were developed and perfected in planning and execution in order to solve such exceptionally diffi-

cult problems as controlling an operation in dense jungle and coordinating the actions of the combat security force and the engineers operating the Rome Plows-particularly when troops were engaged with the enemy. The extreme heat, the dust (or mud during the monsoon season), large falling trees, bomb craters, hidden ravines, and enemy mines took a serious toll of equipment and accessories. Probably no item of equipment was ever operated so far beyond the limits of its designed capabilities as was the Rome Plow tractor in Vietnam. Yet this problem, too, was overcome, at least to the extent that the cost of land-clearing operations was brought to an acceptable level. The organizational changes mentioned earlier formed part of the solution; so did the establishment of direct dealings between land-clearing units and major logistical support facilities. But most of the solution was provided by the land-clearing engineers themselves. Once these men learned what it took in terms of skill, hard work, inventiveness, and just plain desire to keep their equipment operating, they did it. It became routine for a plow operator to spend twelve hours clearing jungle under conditions of extreme physical discomfort and hazard, and then return to the night defensive position and work for six or eight more hours in the darkness repairing his tractor for the honor of being able to repeat the cycle on the following day. Since operations generally lasted forty-five days before a unit was allowed a fifteen-day maintenance stand-down at its home base, the plow operators were called upon for almost unbelievable self-sacrifice. Without their heroic efforts, the cost of landclearing operations on any significant scale would have been prohibitive.

For the uninitiated observer, a visit to a land-clearing unit was unforgettable. The operation was conducted from a hastily constructed nighttime defensive position which, depending on the season, was rapidly churned by the tractors into either a bowl of choking dust or a sea of impassable mud. This was home for a task force that consisted of a land-clearing company and a security force, the latter normally of at least company strength and preferably mechanized. As the clearing progressed the night base was moved, usually every five to seven days, to a new location. Each day's clearing was carefully planned the previous evening by the security force commander, who was usually in over-all charge of the operation, and by his supporting land-clearing commander. Planning included the exact delineation of the area to be cleared, the deployment of security forces, the routes to be followed to and from the cut, special procedures to be followed in case of

"As a safety professional, you always want your workers to have access to leading edge safety tools that improve safety and focus. Working with **COOLSHIRT SYSTEMS** over the past two years allowed me to help design a tool **by lineman for lineman.**"

The **A.R.C. Hybrid Cooling System** by **COOLSHIRT SYSTEMS** allows linemen to remain more focused and less fatigued by reducing their core body temperature in extreme environments, therefore reducing the possibility of unintended accidents."

-James "Jim" Bonner
Compliance Coordinator- Retired
Alabama Power



A.R.C. Hybrid Cooling System

Complete Arc Rated Portable Cooling Solution

Developed in conjunction with major power companies for use in extreme heat conditions, the **A.R.C. Hybrid Cooling System** uses liquid cooling to reduce fatigue, injury, and heat stress related illness.

Designed specifically for use by linemen, the **A.R.C. Hybrid Cooling System** features a compact design with a custom woven strap mounting system. The use of S-hooks offers the versatility of mounting inside or outside of the bucket. The system includes our mobile ice based cooler, a 7 hour lithium ion battery with charger and a **CAT 2, 12 CAL** rated Liquid Cooled Vest for **70E Arc Flash** protection.

Designed with portability in mind, measuring **6" x 6" x 20"** and weighing in at **less than 10 lbs dry**, the unit is entirely self-contained and built to last with a 20,000 hour pump.



A.R.C. Hybrid Cooling System
2002-0017



COOLSHIRT[®]
LIQUID COOLED GARMENTS



enemy contact, and the use of preparatory and supporting artillery and small arms fire. Because of difficulties in navigating in heavy jungle, the operation was controlled as a rule from a helicopter by an officer from the land-clearing unit. The lead tractor was guided by radio in cutting a trace or outline of the area to be cleared while the remaining plows followed in an echelon formation, leaving in their wake an ever-widening swath of cleared jungle. Once the trace was completed, the most difficult navigational problem was over, and the formation of plows continued around the decreasing perimeter until the area of the jungle was eliminated. The vehicles of the security force followed the plows as closely as they were able. Quite often it was necessary to assign tractors to push fallen trees aside to permit passage of the combat vehicles.

In the course of a day, it was common for one-half to two-thirds of the Rome Plows to sustain disabling damage of some sort. Much of this damage was repaired on the spot by a team of mechanics. In other cases, the plow had to be towed back to the night defensive position. Since the operational area was often inaccessible by road, removal of the damaged equipment was complicated. For this reason, land-clearing troops developed enough skill to make repairs in the field that were ordinarily made in depots. It was not unusual to have a tractor hauled into its defensive base, disassembled to its very framework, fitted with new major components, and returned to service in just two or three days. To meet the massive demands of a land-clearing company for spare parts, daily deliveries by the Chinook helicopter became routine.

It was expected that land-clearing companies would suffer

high casualty rates both from enemy action and from natural hazards. Most enemy-inflicted casualties came from mines encountered in the cut or from mortar attacks on night defensive positions. Aside from the obvious danger from falling trees, some of which ranged up to six feet in diameter, there were other natural hazards. Perhaps the most notable of these was the bee. Swarms of these insects often brought clearing activity to a standstill, and many operators had to be hospitalized, some in serious condition. Green smoke flares proved the best means for repulsing bees. No other color than green seemed effective.

On average, a land-clearing company could be expected to clear between 150 and 200 acres of medium jungle each day. Of course, in any specific operation, production depended on many variables including terrain, weather, maintenance, and enemy action. Because of the intense command interest in land-clearing operations, daily production reports received careful scrutiny at all echelons. Unit commanders and even the troops themselves quickly learned this fact and competition between land-clearing companies became intense. The most forthright production report ever received was submitted by a company commander whose Rome Plows had all become hopelessly mired in the monsoon mud before reaching the cut area. His report for the day in the line reserved for "acres cleared" was the most famous one-liner in land-clearing history. It said, "one tree." Needless to say, this report created great concern as it filtered up through channels. An investigation clearly disclosed the impossible situation of the unit; in fact, to cut down a single tree under the circumstances was a major achievement. Queried on this



ESSEX STRUCTURAL STEEL CO., INC.

Pre-Engineered Buildings Built to Withstand The Rugged Northeast Winters

- Commercial, Industrial and Agricultural Buildings Built to Satisfy Your Building Needs
 - Pre-Engineered Steel Packages
 - Pre-Engineered Post Frame Packages
 - Mini Storage Buildings



*Call For a Quote On
Your Next Project*

***We Manufacture 26 & 29 ga.
Steel Roofing & Siding***



STRUCTURAL STEEL CO., INC.



607 Rt. 13 S, Cortland, NY 13045

National: 1-800-323-7739



(607) 753-9384 • Fax: (607) 753-6272 • www.essexsteel.com

point, the company commander admitted that when one of his plow operators attached his winch cable to a dead tree in an attempt to extract his tractor from the mud, the tree fell over and was counted.

From a strategic standpoint, the cumulative effects of land-clearing operations in Vietnam had a decided impact as the enemy was forced increasingly to adjust to the disappearance of his operational bases or to interdiction of connecting trails. The vastly improved capability of allied forces to observe, shoot and move throughout hundreds of thousands of acres of what was formerly "enemy country" represented dramatic progress, not only in a strictly military sense but also in terms of pacification and economic development. In the wake of land-clearing operations came a distinct revitalization of the countryside as villages began to spring up in once-threatened areas, agriculture bloomed where only the impenetrable jungle had stood, and traffic appeared on hundreds of miles of roads made safer by pushing back the jungle growth that once concealed the enemy. This was accomplished at a cost, and that cost was borne primarily by the Engi-

neer Corps soldier who served in the land-clearing units throughout Vietnam. While statistics are usually bland and often misleading, in the case of these young engineers they are extremely interesting. In most land-clearing companies, two out of three men became casualties from enemy action during a one-year tour. Those who were specifically assigned to operate Rome Plows were statistically a cinch to earn a Purple Heart. That all of them did not is attributed to the fact that some received more than one. Add to this the other physical hazards inherent in land clearing, and the occupation appears to be one to be avoided. Yet the rates at which land-clearing specialists re-enlisted or voluntarily extended their tours in Vietnam were consistently at or near the top of the U.S. Army, Vietnam, statistics. Of even greater significance is the fact that these engineer soldiers were not specially trained or screened for land-clearing assignments. In fact, many initially resisted being assigned because of what they had heard about land clearing and its hazards. Yet once assigned, almost universally these men acquitted themselves most admirably. •

**From Basement to Roof
Track Moisture Problems**

**Moisture Meters
and Data Loggers**

**for all Applications
in the Building Industry**

**Need a moisture meter? Buy Lignomat.
We make accurate, easy-to-use meters.**

800-227-2105

Lignomat
moisture measurement

Scan QR Code or call and talk to one of our meter experts.

Lignomat, Portland, OR USA

SAFETY FIRST

OPTIMIZE YOUR WORKSPACE



Available in both
CHAIN & CABLE
Configurations

- Customizable height and reach to best fit your space.
- Ergonomic positioning for easy low strain use.
- Create a safe, efficient work environment.



The Sky Hook is your personal safety lifting solution, preventing lifting injuries while saving you both time and money!

800-4-SKYHOOK

800-475-9466 • 208-365-5770

www.skyhookmfr.com



Ad Index

Company	Pg.	Website
Conduit Repair	BC	www.conduitrepair.com
Coolshirt	15	www.coolshirt.com
Critter Guard	6	www.critterguard.com
Emars Inc	IBC	www.emarsinc.com
Grace Industries	3	www.graceconnectedsafety.com
Krenz Vent	8	www.krenzvent.com
Lignomant	18	www.lignomat.com
Mobile Desk Solutions	1	www.mobiledesk.com
Resa Power	13	www.resapower.com
Rhino Switchboard Mats	11	www.rhinoswitchboardmats.com
Rome Plow	IFC	www.romeplow.com
Sellick	2	www.sellickequipment.com
Skyhook	19	www.skyhookmfg.com
Stoltz	7	www.stoltzfusspreaders.com
Underground Devices	9	www.udevices.com
Working Concepts	20	www.safeworker.com

Work shouldn't hurt.

SOFT KNEES®
No-Strap Knee Pads

STOP a LADDER®
Another fine **ERGO KNEEL** product
www.ergokneel.com

NEW SIZE

888-456-3372 • www.safeworker.com • info@safeworker.com

Payroll People meet at a Tradeshow

Our payroll takes 2 minutes to prepare and keeps us compliant with the DAVIS BACON ACT

Our payroll takes many hours and 3 people to put together

We get an 80% savings in time and money with compliant client - compared to manually prepared payroll

Compliant client sounds great. My friend's construction company was heavily fined being out of compliant. He might go to jail!

I USE COMPLIANT CLIENT BY EMARS

WE MANUALLY PREPARE PAYROLL

Our payroll is certified, worry Free and very inexpensive plus it is DOL APPROVED

- Encrypted
- Free Demo
- Works with Excel
- 55,000 + Client
- Web Based
- Paperless
- Works with Time Clock

Compliant
client
by eMars

emarsinc.com
480-595-0466

REPAIR CONDUIT IN A SNAP!

- No Tape
- No Plastic Straps,
- No Metallic Straps

NO KIDDING!

Designed especially for
power, communications,
and fiber optics



1
Step 1: Remove
Damaged Conduit



2
Step 2: Cut Split
Duct Conduit to Fit



3
Step 3: Snap in
Place



4
Step 4: Attach
Adapters



5
Step 5: Finish Job
in Record Time



“The World Leader In Split Conduit Products”



Conduit Repair Systems, Inc.

The World Leader In Split Conduit Products

800-670-1804

fax: 435-673-8724

email: crs@conduitrepair.com

Please Visit Our Website at WWW.CONDUITREPAIR.COM