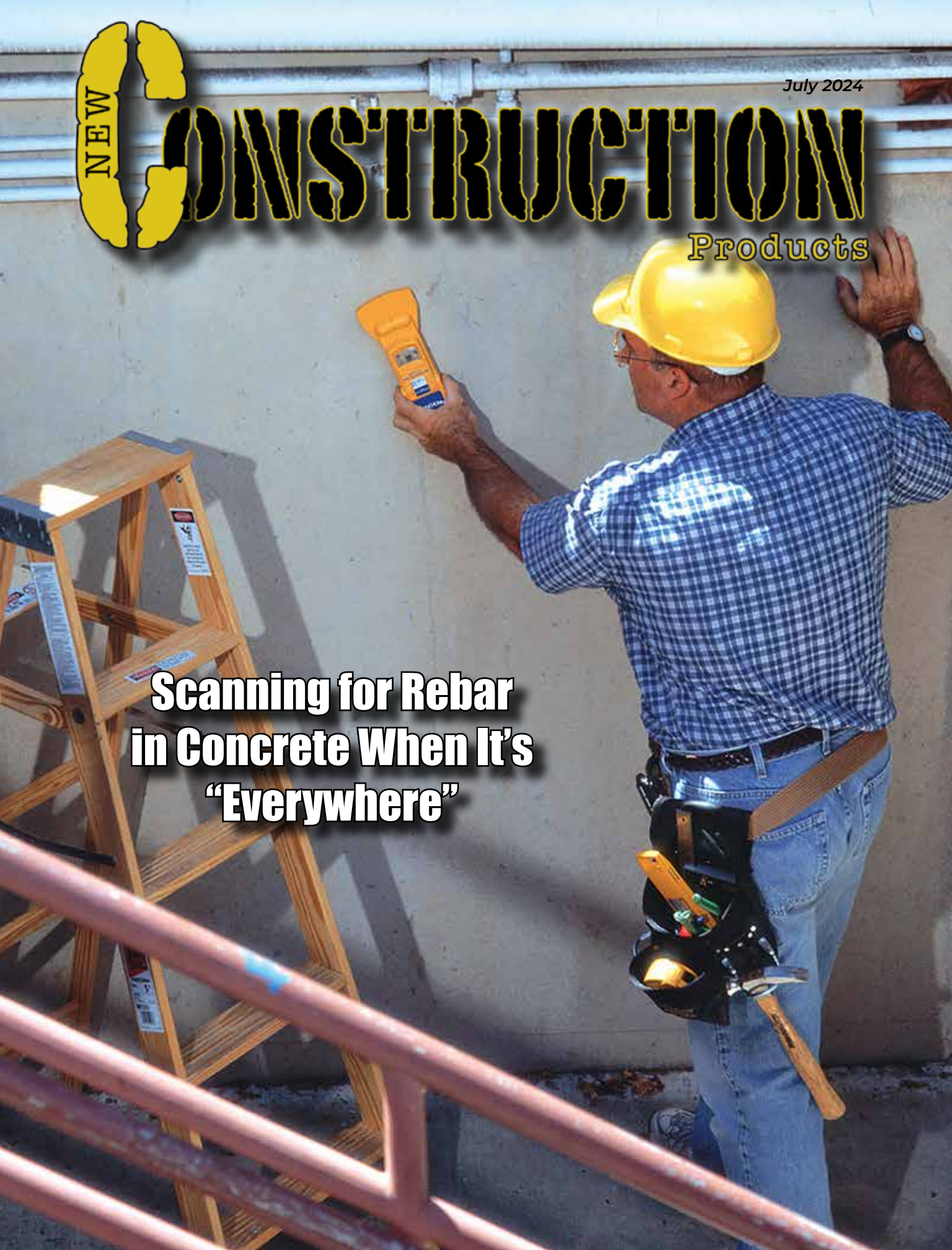


July 2024

NEW CONSTRUCTION

Products

**Scanning for Rebar
in Concrete When It's
"Everywhere"**





TRUST THE SAFEST HITCH ON THE MARKET

HOME OF THE TORSION  FLEX TECHNOLOGY

CREATES A SMOOTHER RIDE, PROTECTS CARGO, REDUCES WEAR AND TEAR ON TRUCK AND TRAILER!



MEGA-DUTY
BOLT-ON ADJUSTABLE
HITCH



MEGA-DUTY
ADJUSTABLE DROP HITCH

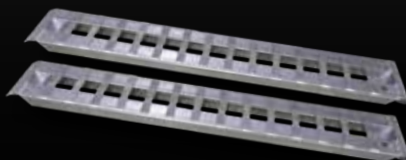


BOSS
TORSION-FLEX
ADJUSTABLE DROP HITCH



SPARTAN
TORSION-FLEX
GOOSENECK COUPLER

HEAVY-DUTY
ALUMINUM RAMPS



AND **MORE!**

LEARN MORE AT GENYHITCH.COM
FOLLOW US @GENYHITCH



ROME

Available in 10, 12, 14, and 16 foot widths



Manufacturing Heavy Duty Construction and Agricultural Equipment Since 1932

ROME Plow has been the premier name in heavy duty disc plows for over 87 years.

Available in 16, 18, 20, 24, and 30 foot widths



ROME has been manufacturing pivot dump and ejector scrapers for over 45 years for the construction and agricultural industries.



Available with 36 or 42" blades, and up to 20' wide

ROME also manufactures a full line of leveling scrapers (with and without gates) and haul road maintenance tools (with and without rollers)



Available in 18 and 22 yard versions

For more information on our products or for the closest authorized ROME dealer please contact us.

Available in 24, 28, 31, 34 and 37 Yards



Steel Tracks available to fit any articulating tractor.

PG 4	Scanning for Rebar in Concrete When It's "Everywhere"
PG 8	Keep Emergency Communication Out of the "Dead Zone"
PG 16	Ad Index



PG 8

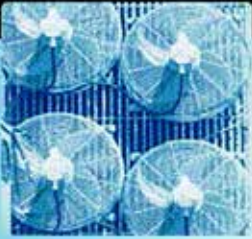
Get Cool!



Extend transformer life!

Increase transformer capacity up to 166%!

- expert technical assistance
- low sound levels
- energy-efficient motors
- large inventory
- one-piece cast aluminum blades
- galvanized or stainless steel guards





quality engineered, performance tested

p.o. box 187 germantown, wisconsin 53022

262.255.3216

www.krenzvent.com

PRESIDENT

Glen Hobson
205-441-5591
glen@handfmedia.net

DIRECTOR OF ADVERTISING

Brian Lockheart
205-624-2182
lockbrian692@gmail.com

DIRECTOR OF BUSINESS

Butch Cole
205-624-2180
butch@handfmedia.net

ADMINISTRATIVE DIRECTOR

Steven Hobson
steven@handfmedia.net

EDITOR

Brandon Greenhill
brandon@handfmedia.net

CREATIVE/ WEB DIRECTOR

Jacklyn Greenhill
jacklyn@handfmedia.net

P.O. Box 1568 • Pelham, AL 35124
Phone: 205-441-5591 • Fax: 205-624-2181
www.newconstructionproducts.com
info@newconstructionproducts.com



New Construction Products™ is published twelve times a year on a monthly basis by Southern Digital Publishing, Inc. *New Construction Products™* is distributed free to qualified subscribers. Non-qualified subscription rates are \$57.00 per year in the U.S. and Canada and \$84.00 per year for foreign subscribers (surface mail). U.S. Postage paid at Birmingham, Alabama and additional mailing offices.

New Construction Products™ is distributed to qualified owners and managers in the construction industry. Publisher is not liable for all content (including editorial and illustrations provided by advertisers) of advertisements published and does not accept responsibility for any claims made against the publisher. It is the advertiser's or agency's responsibility to obtain appropriate releases on any item or individuals pictured in an advertisement. Reproduction of this magazine in whole or in part is prohibited without prior written permission from the publisher.

POSTMASTER: Send address changes to
Southern Digital Publishing, Inc. P.O. Box 1568
Pelham, AL 35124
PRINTED IN THE USA

THE SECRET TO

UNDERGROUND POWER TRANSMISSION



OUR WUNPEECE TRANSMISSION SPACERS REDEFINE THE INDUSTRY STANDARD FOR UNDERGROUND POWER TRANSMISSION INSTALLATIONS. WITH PRECISION ENGINEERING AND UNMATCHED QUALITY,

JOIN THE RANKS OF INDUSTRY LEADERS WHO TRUST UNDERGROUND DEVICES FOR THEIR POWER TRANSMISSION NEEDS.



VISIT WWW.UDEVICES.COM

AND EXPERIENCE THE FUTURE OF UNDERGROUND POWER INSTALLATION



Scanning for Rebar in Concrete When It's “Everywhere”

Advanced handheld metal scanning tools from Zircon detect rebar and other metal deep within concrete to increase worker safety and reduce costs on replacement bits and blades

Concrete is used virtually everywhere in residential, commercial, and industrial construction. Rebar reinforcement is used to add structural integrity to concrete to keep it from breaking due to fluctuations in tension, compression, temperature, earthquakes, and other stresses.

After a concrete structure has been built, it may be necessary to drill or saw into it to incorporate changes. The trouble is that some applications require a significant amount of rebar, which can be set in grid patterns, rows, columns, or even randomly. This creates a situation where it seems impossible to find an appropriate location to drill or cut without hitting metal. Guessing may result in unnecessary holes, equipment damage, and even safety concerns.

To mitigate these risks, construction workers require trustworthy metal scanning tools.

The Risks of Drilling into Rebar

A construction site is not a place to take safety risks, but safety is what you risk when you indiscriminately cut or drill into a maze of rebar. When blades or bits hit metal, they can shatter into flying fragments or grab and bind in the material, causing kickback that can result in severe hand and wrist injuries, if not worse. Worker injuries of this nature can lead to project delays and costly worker's comp claims.

Damaged concrete, drill bits, or saw blades additionally lead to downtime and unnecessary replacement costs.

It is crucial to identify where rebar is located before drilling or cutting into a concrete structure. One technique is ground penetrating radar (GPR), which can locate metallic and non-metallic objects by sending a small electro-



STRUCTURAL STEEL CO., INC.

Pre-Engineered Buildings Built to Withstand The Rugged Northeast Winters

- Commercial, Industrial and Agricultural Buildings Built to Satisfy Your Building Needs
 - Pre-Engineered Steel Packages
 - Pre-Engineered Post Frame Packages
 - Mini Storage Buildings



*Call For a Quote On
Your Next Project*

***We Manufacture 26 & 29 ga.
Steel Roofing & Siding***



STRUCTURAL STEEL CO., INC.



607 Rt. 13 S, Cortland, NY 13045

National: 1-800-323-7739



(607) 753-9384 • Fax: (607) 753-6272 • www.essexsteel.com

magnetic pulse into the concrete and analyzing the echoes that result from subsurface objects.

Although GPR is quite effective at locating rebar deep within a concrete structure, the equipment requires extensive training and can be very expensive.

Fortunately, handheld metal detectors have been around for decades and are very easy to use at a lower cost and with fewer headaches than GPR. Zircon, a leading manufacturer of sensor technologies, offers several models that can detect rebar in concrete at different depths, so the end user can select the best device to fit their needs.

In 1980, Zircon introduced the StudSensor™ stud finder and has continued to innovate in the category for more than 40 years. The Silicon Valley-based, wholly owned subsidiary of ZRCN Inc. produces more than just stud finders. They design and manufacture an extended range of sensor technologies in electronic hand tools including wall scanners, metal detectors, circuit breaker finders, drill guides, water detectors, and leveling tools.

Zircon addresses the issues of locating rebar in concrete through innovative handheld scanning devices

such as the MetalliScanner® MT 7 and the MetalliScanner® MT X metal locators.

The MetalliScanner MT 7 metal detector can be used to locate rebar, pipes, and other metal before sawing or drilling. The scanner can locate metal, including half-inch rebar, up to six inches deep. It offers users two scanning modes – Standard and DeepScan® modes – with position accuracy to within ± half-inch for #4 rebar, which is often used as a strengthening material in slabs, piers, columns, and walls.

The MetalliScanner MT X metal detector is designed to address the difficult task of locating the spaces between rebar in tight grid patterns. In DeepScan mode, the MT X can locate rebar or metal pipes up to four inches deep.

Put to the Test in the Devil's Slide Tunnel Project

A Zircon metal scanner was put to the test during the construction of northbound and southbound tunnels for a project along California's highly trafficked Highway 1, which runs along the cliffs on the Pacific Coast. The area is known as Devil's Slide, due to mudslides from the steep terrain above the highway that often close sections of the road for months at a time. The two



**From Basement to Roof
Track Moisture Problems**

**Moisture Meters
and Data Loggers**

**for all Applications
in the Building Industry**

**Need a moisture meter? Buy Lignomat.
We make accurate, easy-to-use meters.**

Scan QR Code or
call and talk to one
of our meter experts.

Lignomat, Portland, OR USA

800-227-2105

Lignomat
moisture measurement

tunnels are each approximately 4,200 feet long and are connected by ten mechanical rooms.

In one of the first phases of the project, the construction crew was tasked with installing a ventilation system in one of the mechanical rooms. However, due to the extensive amount of rebar, the company's MetalliScanner® MT 6 metal detector, the precursor to its new MT 7, was indicating metal "everywhere." The reason there was so much more rebar was its location in earthquake country. One observer described the Devil's Slide Tunnel as, "less like concrete with steel reinforcement and more like a steel wall with concrete filler."

Given the challenge, the crew contacted a Zircon representative, who physically visited the jobsite to help troubleshoot the problem. He suggested that instead of focusing the MT 6 on finding metal, the crew should instead focus on the weakest signals to find the gaps in the rebar.

The team proceeded to use the Zircon MT 6 to scan in this manner in the remaining nine mechanical rooms and were successful in drilling to install the ventilation without hitting rebar 99% of the time - a vast improvement.

The next phase of the project involved installing Jet Fans, which required the crew to drill into concrete while suspended high in a bucket. The MT 6 allowed for quick scans to determine the ideal locations for the 4 ½ in. concrete fasteners.

Because the scanner is lightweight, the crew was able to perform multiple overhead scans quickly. At the project's completion, the crew advised Zircon that it would be beneficial to add a wrist strap to future metallic scanners to facilitate overhead scanning. This feature has been incorporated in the company's current model, the MT 7, along with a pivot handle attachment and optional extension pole.

It is crucial to understand where rebar is located before attempting to cut or drill. Handheld rebar detection tools are the easiest and most cost-effective way to avoid the maze of rebar in an existing structure before a drill or saw ever touches the concrete.

For more information about Zircon and its wide range of products, call them at (408) 963-4550, e-mail: info@zircon.com, or visit the company's website at www.zircon.com



OIL ALERT®

LIQUID LEAK DETECTOR

DETECT OIL LEAKS AND SPILLS...FAST!

- **AVOID OPERATIONS SHUT-DOWN**
- **REDUCE ENVIRONMENTAL RISKS**
- **MINIMIZE COSTLY CLEAN-UP**
- **MONITOR OFF-SITE EQUIPMENT**

A small amount of oil (1/32 inch) seeping under Oil Alert activates its loud "on/off" alarm and/or relay contact output. The low profile dome shaped unit guards against undetected leakage in areas of oil lubricated / hydraulic equipment, stand-by generators, pressurized piping and fuel oil storage locations...

5 year Limited Warranty

DORLEN Products Inc.
6615 W. Layton Ave. Milwaukee, WI. 53220

Go to WWW.OIL-ALERT.COM
OR CALL: 1-800-533-6392
FOR MORE INFO!!



Keep Emergency Communication Out of the “Dead Zone”



Advanced Emergency Responder Communication Enhancement Systems (ERCES) eliminate potential dead zones in commercial buildings to help first responders stay connected

First responders such as fire, EMS and police depend on reliable two-way radio communication when lives and property are at risk. That’s not always an easy task in many buildings. In-building radio signals are often absorbed or blocked by structures that are larger, underground or constructed of concrete or metal. Additionally, building features designed to create more sustainable facilities such as low-E glass windows can attenuate the signal from public safety radio systems. When this occurs, weak or non-existent signals result in radio communication “dead zones” within commercial structures that can jeopardize coordination among and the safety of first responders during an emergency.

As a result, most fire codes now mandate the installation of Emergency Responder Communication Enhancement Systems (ERCES) for both new and existing commercial buildings. These advanced systems boost the signal inside the building, providing clear, two-way radio communication without dead spots.

“The challenge is that first responders operate on many different frequencies which vary significantly from city to city, so the ERCES equipment must be designed to amplify only the specific assigned channels,” says Trevor Mathews, Wireless Division Manager at Cosco Fire Protection, a provider of business fire suppression and life safety systems for more than 60 years. The company has offered dedicated in-building radio communication system installation services for the past four years.

Mathews adds that this design usually involves tuning the ERCES to prevent signal interference with other frequencies and avoid running afoul of the FCC, which can levy significant fines when violations occur. In addition, companies often must install the entire system before the certificate of occupancy is issued. To meet the tight deadlines, installers rely on ERCES OEMs to quickly deliver the system components.

State-of-the-art ERCES are available that arrive “custom-tuned” by the OEM to the specific required UHF and/or VHF channel. The contractor can then further optimize the device onsite to the actual band frequencies with channel selective adjustments. The approach facilitates meeting all codes and requirements while reducing overall installation cost and complexity.

Payroll People meet at a Tradeshow

Our payroll takes 2 minutes to prepare and keeps us compliant with the DAVIS BACON ACT

Our payroll takes many hours and 3 people to put together

We get an 80% savings in time and money with compliant client - compared to manually prepared payroll

Compliant client sounds great. My friend's construction company was heavily fined being out of compliant. He might go to jail!

I USE COMPLIANT CLIENT BY EMARS

WE MANUALLY PREPARE PAYROLL

Our payroll is certified, worry Free and very inexpensive plus it is DOL APPROVED

- Encrypted
- Free Demo
- Works with Excel
- 55,000 + Client
- Web Based
- Paperless
- Works with Time Clock

Compliant
client
by eMars

emarsinc.com
480-595-0466

Effective ERCES Equipment

ERCES were first introduced in the 2009 International Building Code. The latest codes – such as IBC 2021 Section 916, IFC 2021 Section 510, 2019 NFPA 1221 Section 9.6, NFPA 1 2021 Section 11.10, and 2022 NFPA 1225 Chapter 18 – require all buildings to have an approved level of emergency communication coverage for first responders.

ERCES systems function by connecting through an over-the-air link that the installer optimizes to the public safety radio communications tower network, using

a rooftop directional antenna. This antenna is then connected via coaxial cable to a bi-directional amplifier (BDA), which increases the signal level to provide sufficient coverage within the building, based on life safety standards. The BDA is connected to a distributed antenna system (DAS), a network of relatively small antennas installed throughout the building that serve as repeaters to improve the signal coverage in any isolated areas.

In larger buildings of 350,000 square feet or more, multiple amplifiers may be required to drive an adequate signal level across the system. Besides the building's square footage, other criteria can also affect the number of amplifiers required, such as the building design, type of construction materials used, and the density of construction.

In a recent application, Cosco Fire Protection was tasked with installing an ERCES along with a comprehensive fire and life safety system at a large distribution center in Washington. To meet municipal requirements, Cosco Fire needed to install an ERCES tuned to VHF 150-170 MHz for the fire department and UHF 450-512 for police. The building was due to receive its certificate of occupancy in several weeks, so installation needed to be completed quickly.

To streamline the process, Cosco Fire selected the Fiplex by Honeywell BDA and fiber DAS system, from a leading manufacturer of commercial building fire and life safety systems.

The compliant and certified system was developed to reliably provide superior RF amplification and coverage without noise, enhancing two-way radio signal strength inside buildings, tunnels and other structures. The system is specifically designed to meet NFPA and IBC/IFC code compliance with the UL2524 Second Edition listing.

According to Mathews, one vital



Line Guard | Pole Guard | BirdBloc
Learn More at [CritterGuard.org](https://www.CritterGuard.org)



REPAIR CONDUIT IN A SNAP!

- No Tape
- No Plastic Straps,
- No Metallic Straps

NO KIDDING!

Designed especially for
power, communications,
and fiber optics



“The World Leader In Split Conduit Products”



Conduit Repair Systems, Inc.

The World Leader In Split Conduit Products

800-670-1804

fax: 435-673-8724

email: crs@conduitrepair.com



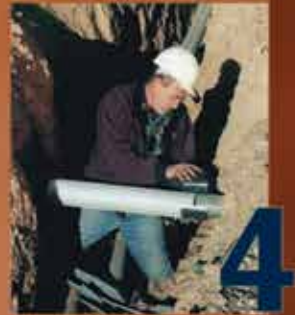
1
Step 1: Remove
Damaged Conduit



2
Step 2: Cut Split
Duct Conduit to Fit



3
Step 3: Snap in
Place



4
Step 4: Attach
Adapters



5
Step 5: Finish Job
in Record Time

Please Visit Our Website at WWW.CONDUITREPAIR.COM

aspect that sets the ERCES apart is the ability of the OEM to “tune” the device to the channels used before shipping. The contractor can then further optimize the BDA’s RF tuning onsite to the precise frequency required with channel selective, software programmable or adjustable bandwidths. This eliminates the issue of wideband transmission in highly congested RF environments, which can otherwise cause outside interference and potentially lead to FCC fines.

Mathews points out another aspect that distinguish-

es Fiplex BDAs from other digital signal boosters: the availability of a dual-band option for dedicated UHF or VHF models.

“Combining the UHF and VHF amplifiers simplifies installation because you have one panel instead of two. It also reduces the necessary wall space, the power requirements, and potential points of failure. Annual testing is also easier,” says Mathews.

With conventional ERCES systems, fire and life safety companies must often source third party components to supplement the OEM’s package.

For a previous application, Mathews found it “difficult to get conventional ERCES equipment to work. We ultimately had to turn to a third party for the [signal] filters needed because the OEM wouldn’t provide them.” Mathews also said the lead time to receive the equipment was several months when he needed it in weeks.

In contrast, the Fiplex by Honeywell equipment was delivered in only a few weeks.

“With other suppliers, it could take 8-14 weeks to receive an amplifier,” explains Mathews. “Now we can get a custom tuned amplifier and install it with the DAS in 5-6 weeks. That is a game changer for contractors, particularly when there is a tight window for the installation,” says Mathews.

For building developers, architects or engineering firms wondering if an ERCES will be required in a new or existing building, the first step is to consult with a fire protection/life safety company that can conduct an RF survey of the space.

The RF Survey is accomplished by measuring the downlink/uplink signal strengths in decibels-milliwatts (dBm) using special measuring devices. Results are submitted to the

Low-Dust Application of Stabilization Materials

Fast, Accurate and Consistent!



**Sizes
from 8 to
27 Tons**

Truck Mounted



Pull-Type



Custom Sizes

- Spreads all dry binding agents accurately
- Spread rates up to 120 lb/sq. yd.
- Available in manual or automatic rate control with Stoltz Controller

Used for Soil Stabilization, Cold In-Place Recycling, Full Depth Reclamation, and similar construction processes, Site Spreaders feature a rugged, fully welded design, 30 inch conveyor, and either automatic or manual controls.



1-800-843-8731
Get all the details you need at
www.stoltzfusspreaders.com

"As a safety professional, you always want your workers to have access to leading edge safety tools that improve safety and focus. Working with **COOLSHIRT SYSTEMS** over the past two years allowed me to help design a tool **by lineman for lineman.**"

The **A.R.C. Hybrid Cooling System** by **COOLSHIRT SYSTEMS** allows linemen to remain more focused and less fatigued by reducing their core body temperature in extreme environments, therefore reducing the possibility of unintended accidents."

-James "Jim" Bonner
Compliance Coordinator- Retired
Alabama Power



A.R.C. Hybrid Cooling System

Complete Arc Rated Portable Cooling Solution

Developed in conjunction with major power companies for use in extreme heat conditions, the **A.R.C. Hybrid Cooling System** uses liquid cooling to reduce fatigue, injury, and heat stress related illness.

Designed specifically for use by linemen, the **A.R.C. Hybrid Cooling System** features a compact design with a custom woven strap mounting system. The use of S-hooks offers the versatility of mounting inside or outside of the bucket. The system includes our mobile ice based cooler, a 7 hour lithium ion battery with charger and a **CAT 2, 12 CAL** rated Liquid Cooled Vest for **70E Arc Flash** protection.

Designed with portability in mind, measuring **6" x 6" x 20"** and weighing in at **less than 10 lbs dry**, the unit is entirely self-contained and built to last with a 20,000 hour pump.



A.R.C. Hybrid Cooling System
2002-0017



COOLSHIRT[®]
LIQUID COOLED GARMENTS

authority with jurisdiction to determine if an ERCES system is required or if a waiver is appropriate.

“Testing early is preferable to reduce cost, complexity and simplify installation if an ERCES is required. If the building fails an RF survey at any point in time, whether completed construction is at 50%, 80% or 100%, the ERCES system will have to be installed, so testing earlier is better before installation becomes more difficult,” says Mathews.

He notes there can be additional challenges when conducting RF testing in structures like warehouses. An empty warehouse may not require an ERCES, but the signal strength can change dramatically in areas of the facility after racking and other equipment is installed, and merchandise is added. If a system is installed once a warehouse is already operational, the fire and life safety company must work around the existing infrastructure and any personnel.

“It is much harder to install ERCES components in an occupied building versus an empty warehouse. Installers may need to use lifts to reach the ceiling, fix cable or place antennas, which is difficult to do at in a fully operational structure,” says Mathews.

If installation of the system interferes with the issuance of a certificate of occupancy, this bottleneck can significantly delay a project.

To avoid delays and technical challenges, commercial building developers, architects and engineering firms can benefit from an expert contractor’s familiarity with the ERCES requirements.

With quick shipment of an advanced ERCES tuned by the OEM to the required RF channel, a skilled contractor can install and further optimize the device to the specific local band frequencies used with channel selective adjustments. The approach expedites the project and compliance, enhancing safety during an emergency.

For more information, contact Dawn Wotapka, Director of External Communications at Honeywell, 715 Peachtree Street, N.E., Atlanta, GA 30308; email: dawn.wotapka@honeywell.com.

www.honeywell.com •



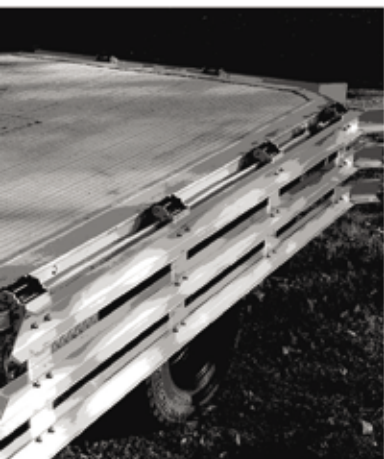


**First
Hingeable
Stake!**



Folds 180°

THE QUICKEST SOLUTION FOR HANDLING STAKE BODIES AND SIDE GATES.



New for Flatbeds! Patented Hinged Stake with Automated Lock

Features:

- Patented quick-release automated spring lock
- Post heights 12in to 48in
- Folds down 180°
- Made from heat-treated high carbon steel (pocket section) and 3/16in aluminum (posts)
- Strength tested
- Made in the USA

Benefits:

- Provides easy insertion, lowering and removing
- Permits easy climb onto flatbed if configured with rails
- Protects and secures tools or transportable items safely
- Adds versatility to most flatbeds

"Previously I had wooden side gates on my work truck. To remove them, you had to pick them up, set them to one side, and put them back, usually requiring two people — they're heavy! With HingePost, I just fold them down."

*— Mathew Hughes, Uncle Shuck's Corn Maze
Dawsonville, Georgia*

Introducing a new chapter in stake-post evolution, rights-holder HingePost has made a dramatic break with traditional designs. The main focus of this newly patented device for flatbeds is its automated locking mechanism and its speed of operation in folding downward 180°. Even its ease of installation and removal from flatbed pockets is notable.

Necessity: the Mother of Invention

HingePost is based in Dahlonega, Georgia and established in early 2023 by Bobby Anderson. The concept was motivated by the desire to accelerate loading times and, also, to contain the payload safely. HingePost uses aluminum, mild steel, and high carbon steel—all 3/16in thick. **The first of its kind**, this new stake post defines a new direction in combining side gates with flatbed platforms.



Dealer inquires welcome.

Contact us today.

PH: 706.739.4998 hinge-post.com

HINGEPOST®

Ad Index

Company	Pg.	Website
Conduit Repair	11, BC	www.conduitrepair.com
Coolshirt	13	www.coolshirt.com
Critter Guard	10	www.critterguard.com
Dorlen	7	www.oil-alert.com
Emars Inc	9	www.emarsinc.com
Essex Steel	5	www.essexsteel.com
Gen-y Hitch	IFC	www.genyhitch.com
Hinge Post	15	www.hingepost.com
Krenz Vent	2	www.krenzvent.com
Lignomant	6	www.lignomat.com
Rhino Switchboard Mats	IBC	www.rhin SWITCHBOARDMATS.COM
Rome Plow	1	www.romeplow.com
Stoltz	12	www.stoltzfusspreaders.com
Underground Devices	3	www.udevices.com
Working Concepts	16	www.safeworker.com

Work shouldn't hurt.

SOFT KNEES®
No-Strap Knee Pads

STOP a LADDER®
Another fine **ergo KNEEL** product
www.ergokneel.com

NEW SIZE

888-456-3372 • www.safeworker.com • info@safeworker.com



RHINO

SWITCHBOARD MATS

FUSEBOX SAFETY MAT™

Rhino Switchboard Mats For The "If" in Life.

Easily carried to job or construction sites, **Fusebox Safety Mat™** by Rhino provides portable insulation when working in close proximity to exposed energized equipment. around substations, transformers, switches, electrical panels, or high-voltage equipment. **Fusebox Safety Mat™** should be used in any area where Health and safety risk assessment shows a possibility of high-voltage shock.

Safety Focused. Results Driven

Rubber-insulating gloves, insulated hand tools, and switchboard-insulating mats are vital components of a successful PPE system. All should be used in conjunction with engineering safeguards and associated work practices.

Quality You Can Count On

All are tested to ASTM D178/ANSI J6.7 specifications with

certification printed on the back.

Two sizes available 2ft X 3ft and 3ft X 3ft,

Two thicknesses 1/2" and 1/4"

Available at most Electrical and

Safety Supply Houses,

ask for Rhino **Fusebox Safety Mat™**,

Home Depot online or

contact us at

713-228-5543 / Info@rhinomats.com

www.rhinoswitchboardmats.com

Extreme-Duty Series Class 4
1/2" thick Corrugated Surface
Test Voltage 50,000 VAC
Proof Test 40,000 VAC
Recommended 36,000 VAC



Heavy-Duty Series Class 2
1/4" thick Diamond Surface
Test Voltage 30,000 VAC
Proof Test 20,000 VAC
Recommended 17,000 VAC



REPAIR CONDUIT IN A SNAP!

- No Tape
- No Plastic Straps,
- No Metallic Straps

NO KIDDING!

Designed especially for
power, communications,
and fiber optics



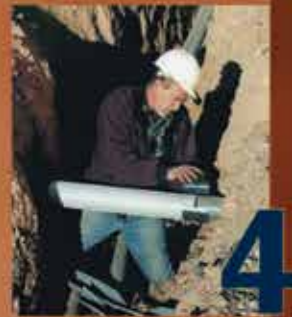
1
Step 1: Remove
Damaged Conduit



2
Step 2: Cut Split
Duct Conduit to Fit



3
Step 3: Snap in
Place



4
Step 4: Attach
Adapters



5
Step 5: Finish Job
in Record Time



“The World Leader In Split Conduit Products”



Conduit Repair Systems, Inc.

The World Leader In Split Conduit Products

800-670-1804

fax: 435-673-8724

email: crs@conduitrepair.com

Please Visit Our Website at WWW.CONDUITREPAIR.COM