

May 2024

# NEW CONSTRUCTION

Products



**TICO Announces  
Availability of the  
Next Generation  
TICO Pro-Spotter  
Electric Terminal  
Tractor**

# ROME

Manufacturing Heavy Duty Construction  
and Agricultural Equipment Since 1932

Available in 10, 12, 14, and 16 foot widths



Available in 16, 18, 20, 24, and 30 foot widths



Available with 36 or 42" blades, and up to 20' wide



Available in 18 and 22 yard versions

Available in 24, 28, 31, 34 and 37 Yards



Steel Tracks available to fit any articulating tractor.

ROME Plow has been the premier name in heavy duty disc plows for over 87 years.

ROME has been manufacturing pivot dump and ejector scrapers for over 45 years for the construction and agricultural industries.

ROME also manufactures a full line of leveling scrapers (with and without gates) and haul road maintenance tools (with and without rollers)

For more information on our products or for the closest authorized ROME dealer please contact us.

# REPAIR CONDUIT IN A SNAP!

- No Tape
- No Plastic Straps,
- No Metallic Straps

## NO KIDDING!

Designed especially for  
power, communications,  
and fiber optics



“The World Leader In Split Conduit Products”



**Conduit Repair Systems, Inc.**

The World Leader In Split Conduit Products

800-670-1804

fax: 435-673-8724

email: [crs@conduitrepair.com](mailto:crs@conduitrepair.com)



Step 1: Remove  
Damaged Conduit



Step 2: Cut Split  
Duct Conduit to Fit



Step 3: Snap in  
Place



Step 4: Attach  
Adapters



Step 5: Finish Job  
in Record Time

Please Visit Our Website at [WWW.CONDUITREPAIR.COM](http://WWW.CONDUITREPAIR.COM)

**NCP Contents • May 2024**

PG 4 Company Profile: Gen-y Hitch

PG 10 TICO Announces Availability of the Next Generation TICO Pro-Spotter Electric Terminal Tractor

PG 14 Kaeser Measurement Technology (KMT) Enhances Compressed Air System Management

PG 18 Monthly Buyer's Guide

PG 20 Ad Index



**PG 14**



Vol. 24 Issue 5

**PRESIDENT**

Glen Hobson  
205-441-5591  
glen@handfmedia.net

**DIRECTOR OF ADVERTISING**

Brian Lockheart  
205-624-2182  
lockbrian692@gmail.com

**DIRECTOR OF BUSINESS**

Butch Cole  
205-624-2180  
butch@handfmedia.net

**ADMINISTRATIVE DIRECTOR**

Steven Hobson  
steven@handfmedia.net

**EDITOR**

Brandon Greenhill  
brandon@handfmedia.net

**CREATIVE/ WEB DIRECTOR**

Jacklyn Greenhill  
jacklyn@handfmedia.net

P.O. Box 1568 • Pelham, AL 35124  
Phone: 205-441-5591 • Fax: 205-624-2181  
www.newconstructionproducts.com  
info@newconstructionproducts.com



*New Construction Products*™ is published twelve times a year on a monthly basis by Southern Digital Publishing, Inc. *New Construction Products*™ is distributed free to qualified subscribers. Non-qualified subscription rates are \$57.00 per year in the U.S. and Canada and \$84.00 per year for foreign subscribers (surface mail). U.S. Postage paid at Birmingham, Alabama and additional mailing offices.

*New Construction Products*™ is distributed to qualified owners and managers in the construction industry. Publisher is not liable for all content (including editorial and illustrations provided by advertisers) of advertisements published and does not accept responsibility for any claims made against the publisher. It is the advertiser's or agency's responsibility to obtain appropriate releases on any item or individuals pictured in an advertisement. Reproduction of this magazine in whole or in part is prohibited without prior written permission from the publisher.

**POSTMASTER:** Send address changes to  
Southern Digital Publishing, Inc. P.O. Box 1568  
Pelham, AL 35124  
**PRINTED IN THE USA**

# Get Cool!

**Extend transformer life!**

**Increase transformer capacity up to 166%!**

- expert technical assistance
- low sound levels
- energy-efficient motors
- large inventory
- one-piece cast aluminum blades
- galvanized or stainless steel guards

**quality engineered, performance tested**

po. box 187 germantown, wisconsin 53022

262.255.2216

[www.krenzvent.com](http://www.krenzvent.com)

# GEN-Y HITCH



**TRUST THE SAFEST HITCH ON THE MARKET**

HOME OF THE **TORSION FLEX TECHNOLOGY**

CREATES A SMOOTHER RIDE, PROTECTS CARGO, REDUCES WEAR AND TEAR ON TRUCK AND TRAILER!



**MEGA-DUTY**  
BOLT-ON ADJUSTABLE  
HITCH



**MEGA-DUTY**  
ADJUSTABLE DROP HITCH

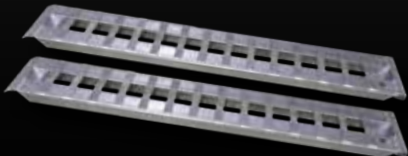


**BOSS**  
TORSION-FLEX  
ADJUSTABLE DROP HITCH



**SPARTAN**  
TORSION-FLEX  
GOOSENECK COUPLER

HEAVY-DUTY  
ALUMINUM RAMPS



AND **MORE!**

LEARN MORE AT [GENYHITCH.COM](http://GENYHITCH.COM)  
FOLLOW US @GENYHITCH





#### *Our Mission*

"To glorify God by being a faithful steward of all entrusted to us and to positively influence all who come in contact with each team member."

#### *Our Values*

A robust and service-driven culture is at the core of our success, offering fulfilling careers for all our Team Members. Our commitment to customer service extends beyond our Customers & Suppliers to each other within the Organization, reflecting our dedication to meeting and exceeding customer expectations.

GEN-Y is committed to a workplace culture where everyone is treated with honor, dignity, and utmost respect, ensuring a safe and respectful environment. Our policies, practices, and benefits are designed to uphold this commitment.

Our core values, which include service, teamwork, Purpose, and innovation, reflect our Purpose and culture. They shape the Team and work experience of all divisions owned & operated by GEN-Y by guiding our decision-making, fostering a collaborative and inclusive environment, and encouraging continuous learning and improvement.

"As a safety professional, you always want your workers to have access to leading edge safety tools that improve safety and focus. Working with **COOLSHIRT SYSTEMS** over the past two years allowed me to help design a tool **by lineman for lineman.**"

The **A.R.C. Hybrid Cooling System** by **COOLSHIRT SYSTEMS** allows linemen to remain more focused and less fatigued by reducing their core body temperature in extreme environments, therefore reducing the possibility of unintended accidents."

**-James "Jim" Bonner**  
Compliance Coordinator- Retired  
Alabama Power



# A.R.C. Hybrid Cooling System

*Complete Arc Rated Portable Cooling Solution*

Developed in conjunction with major power companies for use in extreme heat conditions, the **A.R.C. Hybrid Cooling System** uses liquid cooling to reduce fatigue, injury, and heat stress related illness.

Designed specifically for use by linemen, the **A.R.C. Hybrid Cooling System** features a compact design with a custom woven strap mounting system. The use of S-hooks offers the versatility of mounting inside or outside of the bucket. The system includes our mobile ice based cooler, a 7 hour lithium ion battery with charger and a **CAT 2, 12 CAL** rated Liquid Cooled Vest for **70E Arc Flash** protection.

Designed with portability in mind, measuring **6" x 6" x 20"** and weighing in at **less than 10 lbs dry**, the unit is entirely self-contained and built to last with a 20,000 hour pump.



A.R.C. Hybrid Cooling System  
2002-0017



**COOLSHIRT**<sup>®</sup>  
LIQUID COOLED GARMENTS

*We are here to serve.* We prioritize the needs of our team members and customers, demonstrating our commitment to their growth and satisfaction. We provide comprehensive training and development opportunities for our employees, ensuring they feel valued and invested in. We continuously improve our products and services to meet the evolving needs of our customers, always striving to do what is best for the Organization and our customers. We maintain a healthy work-life balance for our employees, recognizing their personal needs and ensuring customer satisfaction remains our top priority.

*We're better together.* Our collective teamwork and collaboration are the pillars of our success. We foster an inclusive culture that leverages the strengths of our diverse talent to innovate and maximize our care for Team Members and Customers. We ensure everyone feels a sense of belonging and unity, recognizing that we are stronger when we work together.

*We are purpose-driven.* We model our Purpose every day. We connect our work and daily activities to our business strategy. We support each other's efforts to be good stewards who create a positive impact on all who come in contact with each Team Member.

*We are driven by a relentless pursuit of what's next.* We thrive on adapting and reinventing how we do things, from the way we work to how we interact with each other and our Customers. This focus on innovation and adaptability is not just a strategy; it's a mindset that keeps us ahead in a rapidly changing world. We want our audience to feel excited and inspired about the future possibilities.

[www.genyhitch.com](http://www.genyhitch.com) •



## **OIL ALERT<sup>®</sup>** **LIQUID LEAK DETECTOR**

**DETECT OIL LEAKS AND SPILLS...FAST!**

- **AVOID OPERATIONS SHUT-DOWN**
- **REDUCE ENVIRONMENTAL RISKS**
- **MINIMIZE COSTLY CLEAN-UP**
- **MONITOR OFF-SITE EQUIPMENT**

A small amount of oil (1/32 inch) seeping under Oil Alert activates its loud "on/off" alarm and/or relay contact output. The low profile dome shaped unit guards against undetected leakage in areas of oil lubricated / hydraulic equipment, stand-by generators, pressurized piping and fuel oil storage locations...

**5 year Limited Warranty**

**DORLEN Products Inc.**  
6615 W. Layton Ave. Milwaukee, WI. 53220

**Go to [WWW.OIL-ALERT.COM](http://WWW.OIL-ALERT.COM)**  
**OR CALL: 1-800-533-6392**  
**FOR MORE INFO!!**



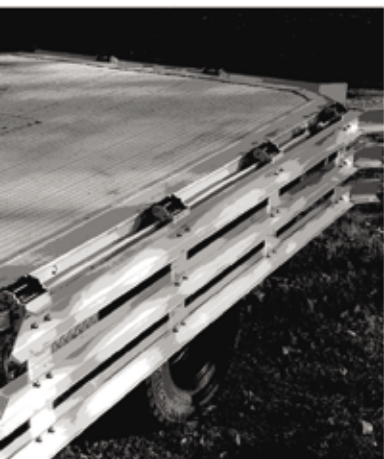


# First Hingeable Stake!



## Folds 180°

# THE QUICKEST SOLUTION FOR HANDLING STAKE BODIES AND SIDE GATES.



## New for Flatbeds! Patented Hinged Stake with Automated Lock

### Features:

- Patented quick-release automated spring lock
- Post heights 12in to 48in
- Folds down 180°
- Made from heat-treated high carbon steel (pocket section) and 3/16in aluminum (posts)
- Strength tested
- Made in the USA

### Benefits:

- Provides easy insertion, lowering and removing
- Permits easy climb onto flatbed if configured with rails
- Protects and secures tools or transportable items safely
- Adds versatility to most flatbeds

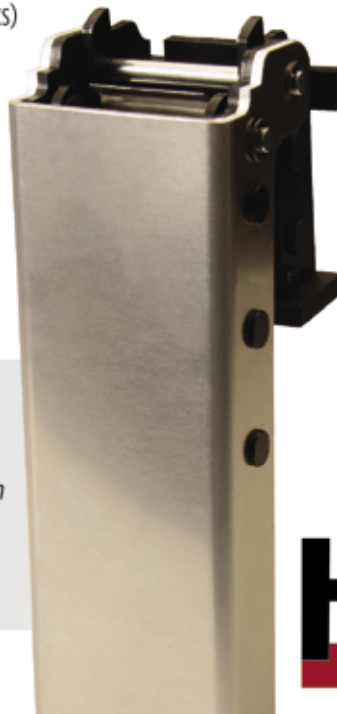
*"Previously I had wooden side gates on my work truck. To remove them, you had to pick them up, set them to one side, and put them back, usually requiring two people — they're heavy! With HingePost, I just fold them down."*

*— Mathew Hughes, Uncle Shuck's Corn Maze  
Dawsonville, Georgia*

Introducing a new chapter in stake-post evolution, rights-holder HingePost has made a dramatic break with traditional designs. The main focus of this newly patented device for flatbeds is its automated locking mechanism and its speed of operation in folding downward 180°. Even its ease of installation and removal from flatbed pockets is notable.

### Necessity: the Mother of Invention

HingePost is based in Dahlonega, Georgia and established in early 2023 by Bobby Anderson. The concept was motivated by the desire to accelerate loading times and, also, to contain the payload safely. HingePost uses aluminum, mild steel, and high carbon steel—all 3/16in thick. **The first of its kind**, this new stake post defines a new direction in combining side gates with flatbed platforms.



**Dealer inquires welcome.  
Contact us today.**

**PH: 706.739.4998 [hinge-post.com](http://hinge-post.com)**

# HINGEPOST®



# STRUCTURAL STEEL CO., INC.

## Pre-Engineered Buildings Built to Withstand The Rugged Northeast Winters

- Commercial, Industrial and Agricultural Buildings Built to Satisfy Your Building Needs
  - Pre-Engineered Steel Packages
  - Pre-Engineered Post Frame Packages
    - Mini Storage Buildings



*Call For a Quote On  
Your Next Project*

***We Manufacture 26 & 29 ga.  
Steel Roofing & Siding***



# STRUCTURAL STEEL CO., INC.



607 Rt. 13 S, Cortland, NY 13045

**National: 1-800-323-7739**



(607) 753-9384 • Fax: (607) 753-6272 • [www.essexsteel.com](http://www.essexsteel.com)

THE SECRET TO

# UNDERGROUND POWER TRANSMISSION



OUR WUNPEECE TRANSMISSION SPACERS REDEFINE THE INDUSTRY STANDARD FOR UNDERGROUND POWER TRANSMISSION INSTALLATIONS. WITH PRECISION ENGINEERING AND UNMATCHED QUALITY,

JOIN THE RANKS OF INDUSTRY LEADERS WHO TRUST UNDERGROUND DEVICES FOR THEIR POWER TRANSMISSION NEEDS.



VISIT [WWW.UDEVICES.COM](http://WWW.UDEVICES.COM)

AND EXPERIENCE THE FUTURE OF UNDERGROUND POWER INSTALLATION

# TICO Announces Availability of the Next Generation TICO Pro-Spotter Electric Terminal Tractor



*Offers Higher Levels of Onboard Energy, Flexibility for Any Application, Especially for Port Operators*

TICO (Terminal Investment Corporation) Manufacturing, the leading terminal tractor manufacturer and one of the largest terminal tractor fleet owners and operators in North America, announced today at the Advanced Clean Transportation (ACT) Expo the launch of the next generation of its Pro-Spotter Electric Terminal Tractor. The next generation Pro-Spotter Electric terminal tractor offers users unprecedented levels of onboard energy.

“It was clear that the market demanded more flexibility in electric terminal tractors. End users should not have to change their entire operations to meet sustainability initiatives and requirements. We set out to tailor our next generation terminal tractor to meet each set of customer requirements and have succeeded in establishing an all-new benchmark for the industry,” said Mallery Pindar, TICO’s Senior Director of Sales and Marketing. “This level of onboard energy finally conquers the challenge that port operators have of runtime when addressing demanding port applications and uses.”

# WE KEEP AMERICA ON TRACK



**MOROOKA**

UTILITY CARRIERS

Call: 800-365-7260

OR

Visit: [morookacarriers.com](http://morookacarriers.com)

TICO announced production of its first generation electric terminal tractor in 2023 with its partnership with Volvo Penta, leveraging the Volvo electric technology into its industry leading terminal tractor design. Recognizing the additional requirements that many terminal tractor users have, TICO's new Pro-Spotter Electric incorporates additional battery and driveline options from a diverse set of suppliers. Full production will commence in 2025.

- of 312 kWh
- Top end unit GCWR of 160,000 lbs. plus 61,000 ft-lbs. of wheel end torque tailored to the port operator
- 175 kWh max fast charge or inductive charging adaptable
- BABA Compliance (Build America, Buy America Compliant), qualifying for the nation's major grant funding programs such as the Clean Ports Program

Key features of the new TICO Pro-Spotter Electric Terminal Tractor include:

- Scalable range of onboard energy levels, with top end

"We understand very well the challenges port operators face," said Dean Newton, TICO's Director of Engineering.

"Drawing on our experiences operating over 2,000 units internally, we also examined every aspect of our customer's operations to help develop this product. We are confident it will meet the challenges our customers face, particularly port operations. Now, 312 kWh is the new benchmark for the industry. This finally conquers the challenge for greater runtime in the work settings that these operators have."

"The launch of the Pro-Spotter Electric Terminal Tractor once again demonstrates why we are the leading terminal tractor manufacturer in the industry," said Jim Grooms, Division President of TICO. "We listened to our port operators and other customers, and delivered a product that meets their needs exclusively as well as those of intermodal operations and distribution centers alike."

ACT Expo 2024 is taking place from May 20-23 at the Las Vegas Convention Center.

*About TICO Manufacturing*  
 TICO Manufacturing is the quality manufacturer of the Pro-Spotter and Pro-Spotter Electric on- and off-Highway terminal tractors for distribution centers, rail terminals and ports, and the Pro-Shuttle terminal trailer. TICO terminal tractors are built in Ridgeland, SC to be "Your Best Move." For more information, please visit [ticottractors.com](http://ticottractors.com).

[www.ticottractors.com](http://www.ticottractors.com) •



Line Guard | Pole Guard | BirdBloc  
**Learn More at [CritterGuard.org](http://CritterGuard.org)**



# B BROWN BEAR



OFF HIGHWAY  
HIGH FLOTATION  
4X4 CARRIER

COMPOSTING  
ATTACHMENTS



BRUSH  
MULCHING  
ATTACHMENT

BACK-FILLING  
ATTACHMENTS



# WWW.BROWNBEARCORP.COM

641-322-4220  
sales@brownbearcorp.com

BROWN BEAR CORPORATION

CORNING, IA 50841  
www.youtube.com/c/Brownbearcorp

# Kaeser Measurement Technology (KMT) Enhances Compressed Air System Management



Kaeser Compressors, a leading provider of innovative compressed air solutions, has launched the new Kaeser Measurement Technology (KMT), a comprehensive suite of intelligent sensors designed to deliver real-time insights and optimize compressed air system performance.

"In today's data-driven manufacturing landscape, effective compressed air system monitoring is critical for maximizing efficiency and minimizing costs," said Timothy Hitzges, System Integrator at Kaeser Compressors. "The KMT empowers our customers to gain a deeper understanding of their compressed air operations, enabling them to make data-driven decisions that optimize performance and reduce energy consumption."

Key Features and Benefits of Kaeser Measurement Technology:

- **Universal connectivity:** KMT devices leverage Power over Ethernet (PoE) for simplified installation and reduced cabling costs. Seamless integration with the Kaeser Sigma Network (SNW) ensures true IIoT (Industrial Internet of Things) capabilities.
- **Unmatched versatility:** KMT devices can be applied across various applications, including high-pressure booster systems. This eliminates the need for multiple vendors and simplifies system management.
- **Real-time data streaming:** The Energy Analyzer and Flow Analyzers boast the ability to stream a multitude of data points in real-time, providing unparalleled insights into system operation.
- **Actionable insights:** KMT goes beyond data collection. Specific data points can trigger automated actions within the compressed air station. For instance, with an additional logic controller and wiring the Ambient Analyzer can monitor room temperature and automatically adjust inlet or exhaust

# Payroll People meet at a Tradeshow

Our payroll takes 2 minutes to prepare and keeps us compliant with the DAVIS BACON ACT

Our payroll takes many hours and 3 people to put together

We get an 80% savings in time and money with compliant client - compared to manually prepared payroll

Compliant client sounds great. My friend's construction company was heavily fined being out of compliant. He might go to jail!

I USE COMPLIANT CLIENT BY EMARS

WE MANUALLY PREPARE PAYROLL

Our payroll is certified, worry Free and very inexpensive plus it is DOL APPROVED

- Encrypted
- Free Demo
- Works with Excel
- 55,000 + Client
- Web Based
- Paperless
- Works with Time Clock

**Compliant**  
**client**  
by eMars

emarsinc.com  
480-595-0466

dampers to maintain optimal operating conditions.

- Superior monitoring and control: KMT data can be seamlessly integrated with the Kaeser Sigma Air Manager 4.0 (SAM 4.0) for comprehensive system monitoring and control. Alternatively, Modbus TCP and Modbus RTU connectivity allows for integration with a cus-

tomers' existing industrial and building automation system.

#### Enhanced Decision-Making with KPIs

While traditional compressed air monitoring solutions often offer limited data points via a single 4-20mA output, KMT delivers a wealth of data points that paint a complete picture of compressed air system health," said Hitzges. "By feeding this data into the SAM 4.0, customers gain valuable key performance indicators (KPIs) that empower them to make informed decisions about their compressed air operations.

For more information, visit us. [kaeser.com/kmt](http://kaeser.com/kmt). To be connected with your local authorized Kaeser representative, please call (877) 417-3527.

About Kaeser Compressors, Inc.: Kaeser Compressors is a leader in reliable, energy efficient compressed air equipment and system design. We offer a complete line of superior quality industrial air compressors as well as dryers, filters, SmartPipe™, master controls, and other system accessories. Kaeser also offers blowers, vacuum pumps, and portable gasoline and diesel screw compressors. Our national service network provides installation, rentals, maintenance, repair, and system audits. Kaeser is an ENERGY STAR Partner.

[www.us.kaeser.com/kmt](http://www.us.kaeser.com/kmt)

## Low-Dust Application of Stabilization Materials Fast, Accurate and Consistent!

Sizes  
from 8 to  
27 Tons



Truck Mounted



Pull-Type



Custom Sizes

- Spreads all dry binding agents accurately

- Spread rates up to 120 lb/sq. yd.

- Available in manual or automatic rate control with Stoltz Controller

Used for Soil Stabilization, Cold In-Place Recycling, Full Depth Reclamation, and similar construction processes, Site Spreaders feature a rugged, fully welded design, 30 inch conveyor, and either automatic or manual controls.



**1-800-843-8731**

Get all the details you need at  
[www.stoltzfusspreaders.com](http://www.stoltzfusspreaders.com)



# RHINO

## SWITCHBOARD MATS

### FUSEBOX SAFETY MAT™

#### *Rhino Switchboard Mats For The "If" in Life.*

Easily carried to job or construction sites, Fusebox Safety Mat™ by Rhino provides portable insulation when working in close proximity to exposed energized equipment. around substations, transformers, switches, electrical panels, or high-voltage equipment. Fusebox Safety Mat™ should be used in any area where Health and safety risk assessment shows a possibility of high-voltage shock.

#### *Safety Focused. Results Driven*

Rubber-insulating gloves, insulated hand tools, and switchboard-insulating mats are vital components of a successful PPE system. All should be used in conjunction with engineering safeguards and associated work practices.

#### *Quality You Can Count On*

All are tested to ASTM D178/ANSI J6.7 specifications with

**Extreme-Duty Series Class 4**  
1/2" thick Corrugated Surface  
Test Voltage 50,000 VAC  
Proof Test 40,000 VAC  
Recommended 36,000 VAC

certification printed on the back.  
Two sizes available 2ft X 3ft and 3ft X 3ft.  
Two thicknesses 1/2" and 1/4"  
Available at most Electrical and  
Safety Supply Houses,  
ask for Rhino Fusebox Safety Mat™,

**Heavy-Duty Series Class 2**  
1/4" thick Diamond Surface  
Test Voltage 30,000 VAC  
Proof Test 20,000 VAC  
Recommended 17,000 VAC

Home Depot online or  
contact us at  
713-228-5543 / Info@rhinomats.com

[www.rhinoswitchboardmats.com](http://www.rhinoswitchboardmats.com)



# Monthly Buyer's Guide

---

- **Buccaneer Rope**  
22319 Alabama Hwy.79  
Scottsboro, AL 35768  
800-358-7673  
[www.bucrope.com](http://www.bucrope.com)
- **Cleanfix Reversible Fans**  
250 Wright Blvd.  
Stratford, ON, CN N4Z1H3  
866-489-3267  
[www.cleanfix.org](http://www.cleanfix.org)
- **Conduit Repair**  
761 Enterprise Dr. # 1  
St. George, UT 84790  
800-670-1804  
[www.conduitrepair.com](http://www.conduitrepair.com)
- **Greaves USA**  
30 Industrial PK.  
Centerbrook, CT. 06409  
800-243-1130  
[www.greaves-usa.com](http://www.greaves-usa.com)
- **Hogg Davis**  
3800 Eagle Loop  
Odell, OR. 97031  
855-883-4909  
[www.hoggdavis.com](http://www.hoggdavis.com)
- **Jeffrey Machine, Inc.**  
3841 Industrial Dr  
Birmingham, AL 35217  
205-841-8600  
[www.jeffreymachine.com](http://www.jeffreymachine.com)
- **Manitex USA**  
3000 S. Austin Av.  
Georgetown, TX. 78626  
877-314-3390  
[www.manitex.com](http://www.manitex.com)
- **M.B. Crushers**  
8730 Technology Way  
Reno, NV. 89521  
855-MBCRUSH  
[www.mbcrusher.com](http://www.mbcrusher.com)
- **Morooka USA**  
11191 Air Park Rd.  
Ashland, VA. 23005  
[www.morooka.com](http://www.morooka.com)
- **Morbark**  
8507 S. Winn RD.  
Winn, MI. 48896  
800-831-0042  
[www.morbark.com](http://www.morbark.com)
- **Ring Power**  
9901 Ringhaven DR.  
Orlando, FL. 32824  
407-855-6195  
[www.ringpower.com](http://www.ringpower.com)
- **Rome Plows**  
475 N.6th. St.  
Cedartown, GA. 30125  
770-748-4450  
[www.romeplow.com](http://www.romeplow.com)
- **Terex Utilities**  
1901 -14th AV. N.W.  
Watertown, SD. 57201  
800-233-2972  
[www.terex.com](http://www.terex.com)
- **U.T.V. INTERNATIONAL**  
8850 Danley Rd.  
Quebec, CN. H4T1M4  
514-345-0990  
[www.utvint.com](http://www.utvint.com)
- **Yale Cordage**  
77 Industrial Park Rd.  
Saco, ME. 04072  
207-282-3396  
[www.yalecordage.com](http://www.yalecordage.com)



From Basement to Roof  
Track Moisture Problems

## ***Moisture Meters and Data Loggers*** for all Applications in the Building Industry

Need a moisture meter? Buy Lignomat.  
We make accurate, easy-to-use meters.



Scan QR Code or  
call and talk to one  
of our meter experts.

Lignomat, Portland, OR USA

800-227-2105

***Lignomat***  
moisture measurement



## **Hydraulic Detachable Gooseneck**

For more than two decades, our Hydraulic Detachable Gooseneck Trailer has been North America's bestselling detachable lowboy for construction professionals—and for good reason.

It's engineered to make unhooking, loading and unloading,  
and hooking up again a simple one-person operation.



TRAIL KING  
industries

[trailking.com](http://trailking.com)

Serving our customers since 1974.

[in](#) [@](#) [t](#) [f](#) [v](#) @trailkingind

## Ad Index

Company	Pg.	Website
Brown Bear	13	<a href="http://www.brownbearcorp.com">www.brownbearcorp.com</a>
Conduit Repair	1	<a href="http://www.conduitreair.com">www.conduitreair.com</a>
Coolshirt	5	<a href="http://www.coolshirt.com">www.coolshirt.com</a>
Critter Guard	12	<a href="http://www.critterguard.com">www.critterguard.com</a>
Dorlen	6	<a href="http://www.oil-alert.com">www.oil-alert.com</a>
Emars Inc	15	<a href="http://www.emarsinc.com">www.emarsinc.com</a>
Essex Steel	8	<a href="http://www.essexsteel.com">www.essexsteel.com</a>
Gen-y Hitch	3	<a href="http://www.genyhitch.com">www.genyhitch.com</a>
Hinge Post	7	<a href="http://www.hingepost.com">www.hingepost.com</a>
Hitch Doc	BC	<a href="http://www.hitchdoc.com">www.hitchdoc.com</a>
Krenz Vent	2	<a href="http://www.krenzvent.com">www.krenzvent.com</a>
Lignomant	19	<a href="http://www.lignomat.com">www.lignomat.com</a>
Morooka USA	11	<a href="http://www.morookacarriers.com">www.morookacarriers.com</a>
Resa Power	IBC	<a href="http://www.resapower.com">www.resapower.com</a>
Rhino Switchboard Mats	17	<a href="http://www.rhinoswitchboardmats.com">www.rhinoswitchboardmats.com</a>
Rome Plow	IFC	<a href="http://www.romeplow.com">www.romeplow.com</a>
Stoltz	16	<a href="http://www.stoltzfusspreaders.com">www.stoltzfusspreaders.com</a>
Trail King	19	<a href="http://www.trailingking.com">www.trailingking.com</a>
Underground Devices	9	<a href="http://www.udevices.com">www.udevices.com</a>
Working Concepts	20	<a href="http://www.safeworker.com">www.safeworker.com</a>

**Work shouldn't hurt.**

**SOFT KNEES®**  
No-Strap Knee Pads

**STOP a LADDER®**  
Another fine **ergoKNEEL** product  
[www.ergokneel.com](http://www.ergokneel.com)

**NEW SIZE**

**888-456-3372 • [www.safeworker.com](http://www.safeworker.com) • [info@safeworker.com](mailto:info@safeworker.com)**



Reliable and Safe. The Power of Us.

**40+ OFFICES**  
ACROSS THE U.S. & CANADA

- ⚡ Electrical Testing and Maintenance
- ⚡ Commissioning and Start-Up Testing
- ⚡ Power Quality Analysis
- ⚡ Cable Testing and Fault Location
- ⚡ Online and Offline Cable Partial Discharge Testing
- ⚡ Engineering Services
- ⚡ Electrical Safety Training
- ⚡ Renewable Energy Systems Testing
- ⚡ Power Distribution System Testing
- ⚡ Power System Troubleshooting and more...



**SERVICES**

**TRANSFORMERS**

**SYSTEMS**

**COMPONENTS**



[resapower.com](http://resapower.com)



Network with us on LinkedIn and follow us on social media as we routinely publish the most recent company news, share best practices, post open jobs, and more.



SCAN ME

**GOT A TOUGH ONE?**



**800-576-RESA**



**sales@resapower.com**



# HITCHDOC®

***Want to speed up your snow removal or dirt work?***

# ***WE HAVE YOU COVERED***



***All Hydraulic Snowblowers***

***990 Gallon Fuel Carts***

***Sandpiper Spreader***



Available for Tractors, Compact Wheel Loaders & Skid Steers!



Bring fuel to your equipment; not the other way around



Scoop up media and spread it from 30 feet to 30 inches

## ***A Cut Above***

With over 25 years of experience and an ISO9001 certified manufacturing process; we will ensure your equipment serves you for years to come



Eject Sticky Material with Ease!

***Pushout Buckets***



Grade with Ease, Speed, & Precision

***Dual Dozer Grading System***

Scan the Code Below to Learn More!



Contact Us At 507-847-4049  
or email us at  
[marketing@hitchdoc.com](mailto:marketing@hitchdoc.com)