

April 2023

NEW

CONSTRUCTION

Products

**Ingersoll Rand
Expands IQV20™
Battery Series**

**LineWise® Updates
Insulated Work Platform,
Adds Optional Hydraulic
Articulation**

ROME

Manufacturing Heavy Duty Construction
and Agricultural Equipment Since 1932

Available in 10, 12, 14, and 16 foot widths



Available in 16, 18, 20, 24, and 30 foot widths



Available with 36 or 42" blades, and up to 20' wide



Available in 18 and 22 yard versions

Available in 24, 28, 31, 34 and 37 Yards



Steel Tracks available to fit any articulating tractor.

ROME Plow has been the premier name in heavy duty disc plows for over 87 years.

ROME has been manufacturing pivot dump and ejector scrapers for over 45 years for the construction and agricultural industries.

ROME also manufactures a full line of leveling scrapers (with and without gates) and haul road maintenance tools (with and without rollers)

For more information on our products or for the closest authorized ROME dealer please contact us.

BROWN BEAR



OFF HIGHWAY
HIGH FLOTATION
4X4 CARRIER

COMPOSTING
ATTACHMENTS



BRUSH
MULCHING
ATTACHMENT

BACK-FILLING
ATTACHMENTS



WWW.BROWNBEARCORP.COM

641-322-4220
sales@brownbearcorp.com

BROWN BEAR CORPORATION

CORNING, IA 50841
www.youtube.com/c/Brownbearcorp

NCP Contents • April 2023

PG 4 Pettibone Hits 15,000-Pound-Capacity Benchmark With New Extendo1544X Telehandler

PG 8 Ingersoll Rand Expands IQV20™ Battery Series with New Cordless Impact Driver, Wrenches, and Angle Grinder

PG 14 LineWise® Updates Insulated Work Platform, Adds Optional Hydraulic Articulation

PG 18 A Matter of Trust: Contractors Weigh in on Daylighting Systems

PG 22 Monthly Buyer's Guide

PG 24 Ad Index



Pg 18



Atlantic Screen & Mfg., Inc.

- Well Rehab. Products
- Manholes
- Bentonite
- Filter Sock
- Inline Chemical Mixers
- Sampling Ballers
- Clear PVC Pipe
- Locking Caps

Manufacturers of Slotted & Perforated Pipe ranging from 1/2" to 24" in diameter

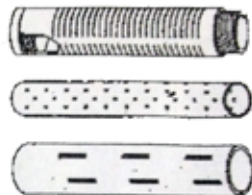
302-684-3197

FAX 302-684-0643

142 Broadkill Rd. • Milton, DE 19968

www.atlantic-screen.com

email: atlantic@ce.net



Vol. 23 Issue 4

PRESIDENT

Glen Hobson
205-441-5591
glen@handfmedia.net

DIRECTOR OF ADVERTISING

Brian Lockheart
205-624-2182
lockbrian692@gmail.com

DIRECTOR OF BUSINESS

Butch Cole
205-624-2180
butch@handfmedia.net

ADMINISTRATIVE DIRECTOR

Steven Hobson
steven@handfmedia.net

EDITOR

Brandon Greenhill
brandon@handfmedia.net

CREATIVE/ WEB DIRECTOR

Jacklyn Greenhill
jacklyn@handfmedia.net

P.O. Box 1568 • Pelham, AL 35124
Phone: 205-441-5591 • Fax: 205-624-2181
www.newconstructionproducts.com
info@newconstructionproducts.com



New Construction Products™ is published twelve times a year on a monthly basis by Southern Digital Publishing, Inc. *New Construction Products™* is distributed free to qualified subscribers. Non-qualified subscription rates are \$57.00 per year in the U.S. and Canada and \$84.00 per year for foreign subscribers (surface mail). U.S. Postage paid at Birmingham, Alabama and additional mailing offices.

New Construction Products™ is distributed to qualified owners and managers in the construction industry. Publisher is not liable for all content (including editorial and illustrations provided by advertisers) of advertisements published and does not accept responsibility for any claims made against the publisher. It is the advertiser's or agency's responsibility to obtain appropriate releases on any item or individuals pictured in an advertisement. Reproduction of this magazine in whole or in part is prohibited without prior written permission from the publisher.

POSTMASTER: Send address changes to
Southern Digital Publishing, Inc. P.O. Box 1568
Pelham, AL 35124

PRINTED IN THE USA

Manitex

VISIT US AT: WWW.MANITEX.COM
STRENGTH. DEPENDABILITY. MANITEX.

THE RIGHT TOOL FOR THE JOB

THE M150 IS IDEAL FOR PLANT, OIL REFINERY OR WAREHOUSE APPLICATIONS. SITTING AT JUST OVER 11 FT. TALL THE M150 CAB-DOWN IS IDEAL WHEN SPACE IS LIMITED. WITH ITS COMPACT SIZE THIS LOW-PROFILE CRANE IS DESIGNED FOR HIGH PERFORMANCE WHILE REMAINING VERSATILE TO AN ARRAY OF WORK ENVIRONMENTS.

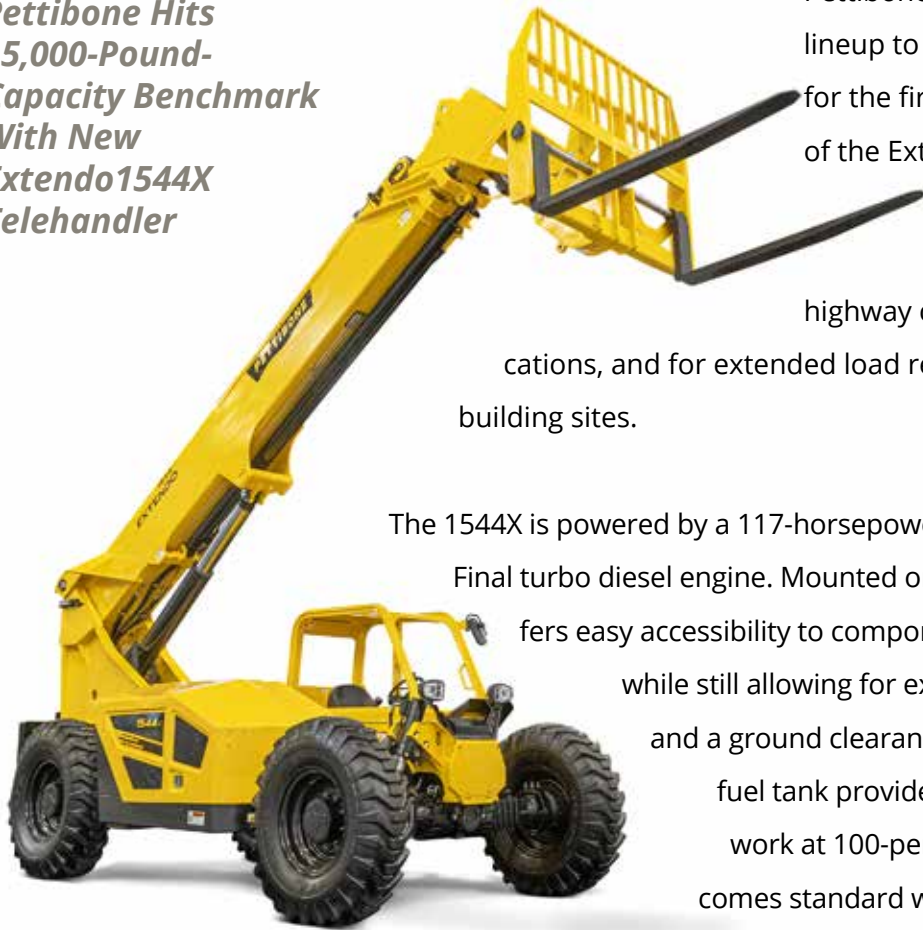
M150 - 15 TON

- ✓ Optimal operator comfort
- ✓ Fully adjustable controls
- ✓ Best in class load chart

Stand out safety features!
(Override key switch, rear view camera, ext. LMI utilization light)



**Pettibone Hits
15,000-Pound-
Capacity Benchmark
With New
Extendo1544X
Telehandler**



Pettibone brings its X-Series telehandler lineup to the 15,000-pound lifting class for the first time with the introduction of the Extendo 1544X telehandler. The added load capacity is ideal for material handling tasks in highway construction, pipe yard applications, and for extended load requirements on traditional building sites.

The 1544X is powered by a 117-horsepower Cummins QSF 3.8 Tier 4 Final turbo diesel engine. Mounted onto a side pod, the engine offers easy accessibility to components and daily service checks, while still allowing for exceptional curbside visibility and a ground clearance of 19 inches. The 30-gallon fuel tank provides ample volume for a full day's work at 100-percent load. The telehandler comes standard with foam-filled tires.

Built on Pettibone's next-gen X-Series platform and featuring an advanced boom design, the 1544X offers a maximum lift height of 44 feet, a maximum forward reach of 29 feet, and a maximum load capacity of 15,000 pounds. Formed boom plates provide the boom structure with greater strength while reducing weight. The design also minimizes boom deflection for better control and accuracy when placing loads.

Significant boom overlap provides smoother operation and reduces the contact forces on wear pads, thereby extending service life. An external, bottom-mounted extend cylinder further reduces the load on wear pads by up to 50 percent. The cylinder location provides improved service access to internal boom components. Fastener-less wear pads also simplify service, and heavy-duty extension chains help to ensure stable boom functions.

Pettibone's tried-and-true hydraulic circuit delivers exceptional controllability and operating feel, while enhancing efficiency and cycle speeds. Cylinder cushioning dampens the end of strokes—both extending and retracting—to avoid the wear and tear of hard, jarring stops, while also helping to prevent the potential spilling of a load. The 1544X uses a single lift cylinder that improves operator sight lines

800.557.0098 | golight.com

GO LIGHT



DURABLE
VERSATILE



POWERFUL
GUARANTEED

and has twin hydraulic lines for tilt and auxiliary plumbing.

The new Extendo 1544X comes standard with X-Command™, a Pettibone telematics program that offers real-time access to machine data, saving time and money for equipment owners and service technicians.

The drivetrain and axles are optimized to provide greater tractive effort with minimal tradeoff on top-end speed. A pintle-hitch mount adds versatility for towing. Built for use on rough terrain, the machine offers full-time 4-wheel-drive with a limited-slip front-axle differential. Tight-steer-angle capability provides an efficient turning radius. The

Dana VDT12000 Powershift transmission offers three speeds, forward and reverse.

The X-Series operator cab maintains Pettibone's standard features, including ergonomic seat, pedal, joystick, and steering-wheel positions, while optimizing lines of sight in all directions. An analog/LCD gauge cluster comes standard, and an optional 7-inch digital display with an integrated backup camera is also available. The cab also offers enhanced climate control, flat bolt-in glass, a split-door design, an openable rear window, lockable storage under the seat, and water-resistant components for easy interior washdown.

All-steel fuel and hydraulic tanks are built to resist damage, and the lockable fuel-fill is in a clean, accessible location. Other built-in features include split-system electrical circuit panels and heavy-duty bright LED lighting. Additional options include solid tires, a sling hook for additional load security, a high-output LED lighting package, and a wide variety of attachments.

Pettibone/Traverse Lift, LLC is part of the Industrial Technologies Group, an affiliate of The Heico Companies. Founded in 1881, Pettibone has been recognized as the industry leader in material handling equipment since the company revolutionized the industry with the first forward-reaching, rough-terrain machines in the 1940s. For more information, call 906-379-4529 or visit www.gopettibone.com

Get Cool!

Extend transformer life!

Increase transformer capacity up to 166%!

- expert technical assistance
- low sound levels
- energy-efficient motors
- large inventory
- one-piece cast aluminum blades
- galvanized or stainless steel guards

KRENZ-VENT
quality engineered, performance tested

p.o. box 187 germantown, wisconsin 53022 262.255.2318 www.krenzvent.com



SAFELY Lifts Up To 500 lbs!

- Ergonomic
- Portable
- Lightweight
- Meets OSHA & ASME Requirements

Customized Safety Lifting Devices For Any Application

Available in both
CHAIN & CABLE
Configurations



The Sky Hook is your personal safety lifting solution, preventing lifting injuries while saving you both time and money!

800-4-SKYHOOK

800-475-9466 • 208-365-5770

www.skyhookmfr.com

SKY HOOK

ATTCO, Inc. OSA
by SYCLONE ATTCO SERVICE

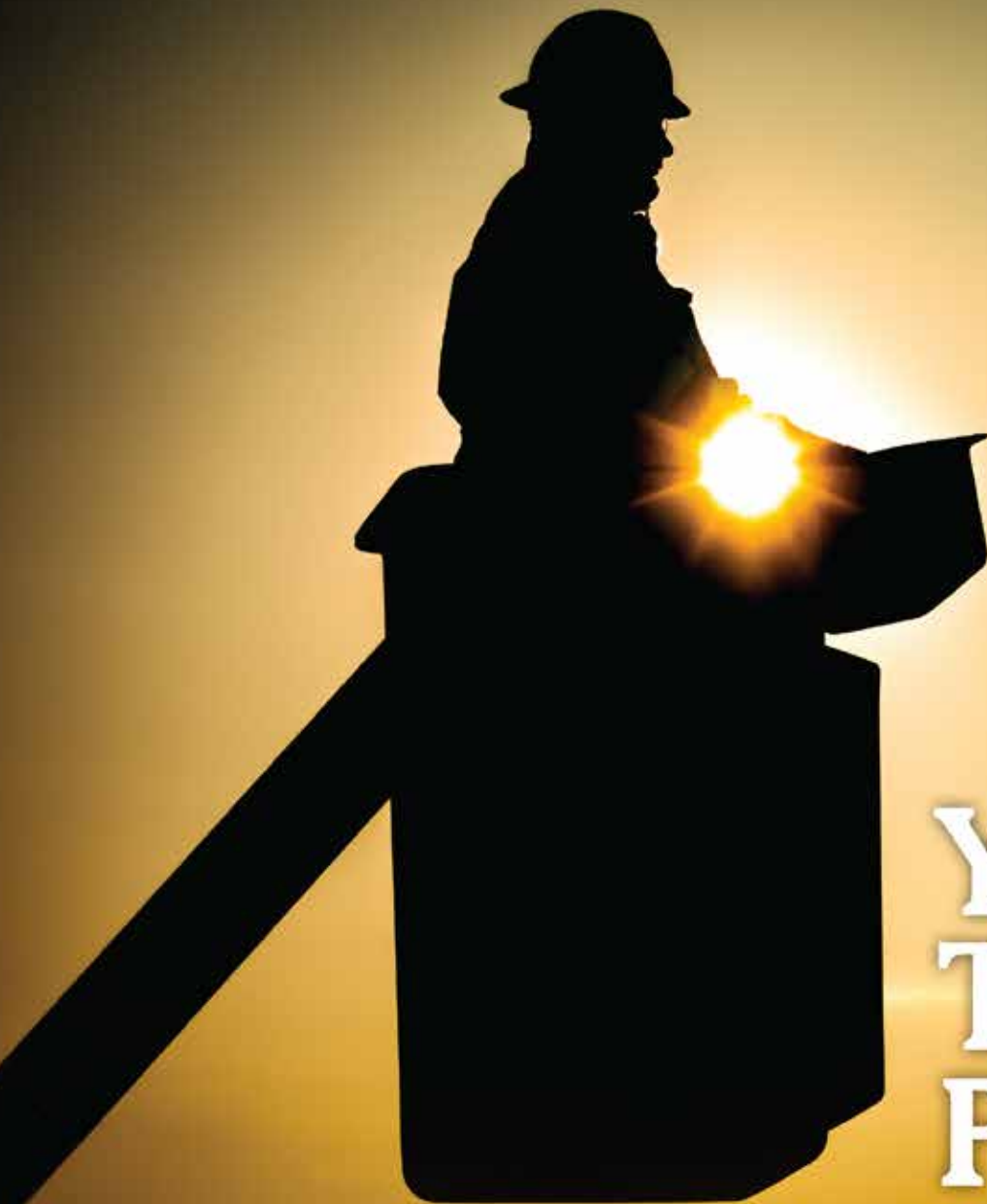


Ingersoll Rand Expands IQV20™ Battery Series with New Cordless Impact Driver, Wrenches, and Angle Grinder

Lightweight, Mobile, and Exceptional Power-to-Weight Ratio

Maneuver with greater mobility, powered by a series of new Ingersoll Rand cordless tools ready for the most demanding industrial and automotive environments. Engineered to conquer a range of applications, the Ingersoll Rand IQV20™ Cordless Compact Impact Wrenches and G5351 IQV20™ Cordless Angle Grinder deliver maximum versatility, impressive power, and cordless freedom in a compact form factor that boosts productivity all on the same IQV20™ battery system for added convenience.

Image “We’re expanding our portfolio so technicians can experience the power and performance they’ve come to expect from Ingersoll Rand now with cordless options to accommodate workspaces



Your Trusted Partner.

Partnering with Ring Power gives you access to a vast range of jobsite-tough products to round out your fleet. Ring Power carries machines from dozens of manufacturers to ensure you always have access to the right tools for your job.

Short-term, long-term or rental-purchase options available.



1-844-766-RENT • Utility.RingPower.com



fine-tuning for different applications; a patented 360° LED light ring that fully eliminates shadows; impact-resistant design for maximum durability; and a 3-year limited warranty.

Along with their shared features, the three IQV20™ Cordless Compact Impact Wrenches offer unique benefits that make them a must-have addition to any technician's toolbox.

Compact even by cordless standards, the IQV20™ 1/4" Compact Impact Driver delivers up to 3,400 in-lbs. of fastening torque and weighs in at just 2.3 lbs. — the best power-to-weight ratio in its class. With a tip-to-tail length of 5.2", the IQV20™ 1/4" Compact Impact Driver offers 10% less weight and 20% more torque than its leading competitor for better tool maneuverability with less fatigue, and more control.

W3131 IQV20™ Cordless Compact 3/8" Impact Wrench Out-Torques Coded Tools

The IQV20™ Compact 3/8" Impact Wrench boasts breakaway torque up to 400 ft-lbs., a maximum speed of 2,800 RPM, and 4,200 blows per minute (BPM) for rapid removal of fasteners. Weighing 2.3 lbs., this cordless compact impact wrench is the lightest in its class while out-performing corded and pneumatic tools with a 3/8" square drive.

W3151 IQV20™ Cordless Compact 1/2" Impact Wrench Handles Demanding Applications

Featuring a 1/2" square anvil size for use with impact-rated sockets, the cordless IQV20™ Compact 1/2" Impact Wrench sports an excellent power-to-weight ratio. The 450 ft-lbs. of breakaway torque, 320 ft-lbs. of fastening torque, 2,800 RPM, and 4,200 BPM quickly complete demanding applications. The short 5.3" tip-to-tail length and compact size make this tool a great choice for accessing

where extension cords and hoses get in the way," explains Sean Fitzgibbons, Global Product Manager, Power Tools, Ingersoll Rand. "While they're compact and lightweight, these cordless tools deliver best-in-class power-to-weight ratio."

The new Ingersoll Rand IQV20™ Cordless Compact Impact Wrenches share several innovative features, including cordless maneuverability; a brushless motor that delivers impressive torque for a broad range of applications; three speed modes with variable speed triggers that allow

REPAIR CONDUIT IN A SNAP!

- No Tape
- No Plastic Straps,
- No Metallic Straps

NO KIDDING!

Designed especially for
power, communications,
and fiber optics



“The World Leader In Split Conduit Products”



Conduit Repair Systems, Inc.

The World Leader In Split Conduit Products

800-670-1804

fax: 435-673-8724

email: crs@conduitrepair.com



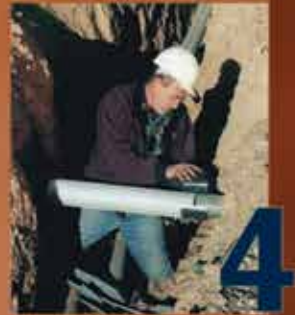
1
Step 1: Remove
Damaged Conduit



2
Step 2: Cut Split
Duct Conduit to Fit



3
Step 3: Snap in
Place



4
Step 4: Attach
Adapters



5
Step 5: Finish Job
in Record Time

Please Visit Our Website at WWW.CONDUITREPAIR.COM



tight spaces while reducing fatigue.

Rounding out the new cordless releases is the Ingersoll Rand IQV20™ Cordless 4.5/5.0" Angle Grinder and Cut-Off Tool. Ideal for industrial and automotive repair, the IQV20™ Cordless Angle Grinder combines the power of pneumatic at 1.0 horsepower (hp) output with up to 8,000 RPM, and the mobility of a cord-free tool.

Featuring a shorter length, 30% less weight than its leading competitor, and inline battery alignment, the slim and well-balanced IQV20™ Cordless Angle Grinder makes it easy to work in enclosed spaces while reducing fatigue. Anti-kick-back and e-brake features provide safe, reliable performance. As with the cordless IQV20™ Compact Impact Tools, the IQV20™ Cordless Angle Grinder works with the same 20V batteries. Available in a kit that includes one grinder, two guards, one side handle, two batteries, and one battery charger.

"These cordless tool options represent Ingersoll Rand's continuous investment in innovations that better support our customers' productivity,

efficiency, and safety," adds Fitzgibbons. "Technicians have long trusted Ingersoll Rand for reliable performance in the most rugged environments and applications. We're adding versatility to that performance with cordless tools that provide the same level of power and control in mobile options that make easy work of challenging applications."

For more information on these tools, visit **[IRTools.com/w3111](https://www.irtools.com/w3111)**, **[IRTools.com/w3131-w3151](https://www.irtools.com/w3131-w3151)**, and **[IRTools.com/g5351](https://www.irtools.com/g5351)** •

About Ingersoll Rand Inc.

Ingersoll Rand Inc. (NYSE: IR), driven by an entrepreneurial spirit and ownership mindset, is dedicated to helping make life better for our employees, customers, and communities. Customers lean on us for our technology-driven excellence in mission-critical flow creation and industrial solutions across 40+

respected brands where our products and services excel in the most complex and harsh conditions. Our employees develop customers for life through their daily commitment to expertise, productivity and efficiency. For more information, visit www.IRCO.com.

TRANSFORM YOUR PULL WITH THE ALL NEW ELECTRIC DUCT DAWG



Electrification of Sherman+Reilly equipment is transforming customer expectations, with an all-electric drivetrain built to exceed all-day use, no matter how tough the job gets. The On-board Rapid Recharge System by S+R™ provides superior performance and automatic battery management to ensure every job is completed without interruption or concern for battery capacity. Plus, receive real time industry leading support with S+R Telematics™ at no additional cost.


INVENTING WHAT'S NEXT



SHERMAN-REILLY.COM

LineWise[®] Updates Insulated Work Platform, Adds Optional Hydraulic Articulation



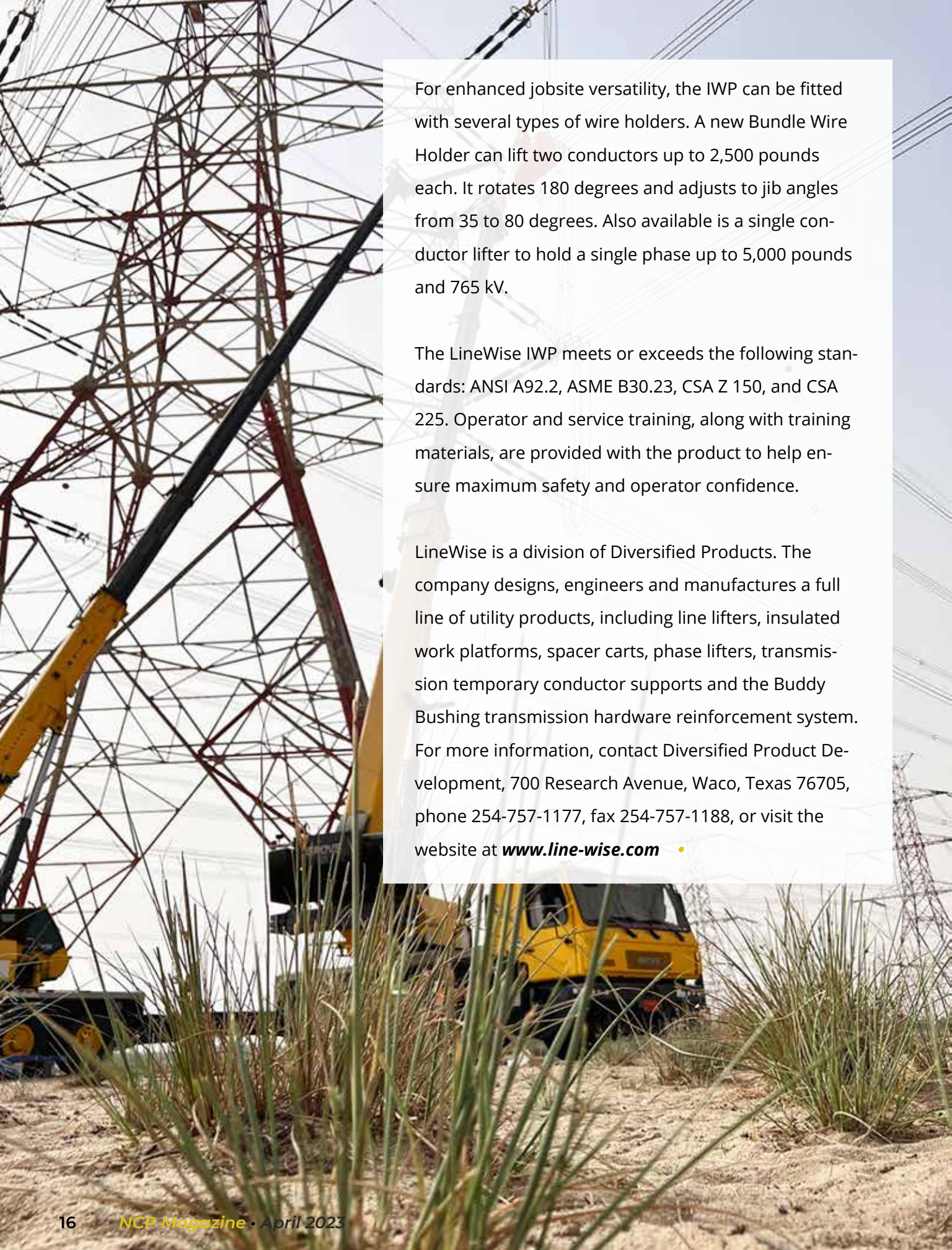


LineWise® has updated its Insulated Work Platform (IWP), including the option to hydraulically articulate the jib up to 45 degrees for improved access to hard-to-reach areas. The IWP is designed for installation on hydraulically telescoping cranes to increase the utilization of existing equipment. This versatility not only reduces the need for expensive, dedicated insulated aerial equipment, but it also offers a solution for utilities struggling to procure bucket trucks in the current market.

Equipped with a corona ring, the IWP is rated for barehand work up to 765 kV. The insulated fiberglass jib is sealed from moisture and other contaminants to maintain insulation properties. It includes a visible desiccant canister and current leakage monitor for maximum safety.

Fiber optic or radio controls are integrated into the crane's control valves to operate all functions from the basket, such as hydraulic telescoping and rotating of the crane. If equipped with the optional hydraulic articulating jib, featuring a self-contained hydraulic system, this function can also be operated via remote while in the air. The articulation capability can help linemen reach the middle phase and other difficult access areas. Variable-speed, programmable controls offer precise, smooth operation when adjusting the position of the basket.

A ruggedly built two-man basket (36" x 72" platform) with 1,200-pound capacity comes standard with the IWP. It offers a quick-attach design for easy installation and removal with ground access for entering and loading. The platform is gravity hung with a disc brake to lock the platform into position. It includes serviceable, self-lubricating bushings for superior durability. A single-man platform and other specialty basket options are also available.



For enhanced jobsite versatility, the IWP can be fitted with several types of wire holders. A new Bundle Wire Holder can lift two conductors up to 2,500 pounds each. It rotates 180 degrees and adjusts to jib angles from 35 to 80 degrees. Also available is a single conductor lifter to hold a single phase up to 5,000 pounds and 765 kV.

The LineWise IWP meets or exceeds the following standards: ANSI A92.2, ASME B30.23, CSA Z 150, and CSA 225. Operator and service training, along with training materials, are provided with the product to help ensure maximum safety and operator confidence.

LineWise is a division of Diversified Products. The company designs, engineers and manufactures a full line of utility products, including line lifters, insulated work platforms, spacer carts, phase lifters, transmission temporary conductor supports and the Buddy Bushing transmission hardware reinforcement system. For more information, contact Diversified Product Development, 700 Research Avenue, Waco, Texas 76705, phone 254-757-1177, fax 254-757-1188, or visit the website at www.line-wise.com •



STRUCTURAL STEEL CO., INC.

Pre-Engineered Buildings Built to Withstand The Rugged Northeast Winters

- Commercial, Industrial and Agricultural Buildings Built to Satisfy Your Building Needs
 - Pre-Engineered Steel Packages
 - Pre-Engineered Post Frame Packages
 - Mini Storage Buildings



*Call For a Quote On
Your Next Project*

***We Manufacture 26 & 29 ga.
Steel Roofing & Siding***



STRUCTURAL STEEL CO., INC.



607 Rt. 13 S, Cortland, NY 13045

National: 1-800-323-7739



(607) 753-9384 • Fax: (607) 753-6272 • www.essexsteel.com

A Matter of Trust: Contractors Weigh in on Daylighting Systems



Contractors place their trust in rooftop systems that provide brilliant, diffused daylight to interior spaces with easy installation and high level of leak-free reliability

Natural sunlight has long been known to be superior to any kind of artificial light source. It contains the full spectrum of colors and studies show that people are generally happier and healthier living, working, and shopping in sunlit environments. Although windows enable natural light to enter a building, organizations often use artificial lighting inside. Today, many seek to allow natural lighting to illuminate the interior.

As a result, business and warehouse owners are turning to daylighting systems to reduce and sometimes even eliminate the need for artificial lighting during the day. Daylighting systems, which passively harness and enhance the sun's light, are not simple skylights. Rather, applying physics to standard glass domes facilitates and diffuses the light entering a building without harshness or glare. These energy-efficient systems can evenly illuminate building interiors of any size with pleasing daylight. The dramatic effect floods the space with bright light, enabling true color perception, which is crucial for selling many products.

Even with these tangible benefits, the contractor is usually focused on ease of installation and reliability. The contractor's prime concern typically is "After the job, can I sleep

at night without worrying about getting a callback [for leakage] after the first rain?"

After all, any penetration of a watertight roof membrane can introduce a potential pathway for water, which no one wants. So, contractors need exceptional trust that the systems they install will have a high level of leak-free integrity.

In the industry, one reliable daylighting system, Campbell Hill, IL-based DayStar Skylight Systems, is specifically engineered for leak-free installation. Contractors make it clear to their customers that the installation process gives them confidence in its watertight integrity.

The DayStar system is composed of four parts. First, sunlight is gathered and diffused through an ultra-clear outer dome and inner collimation lens. A light shaft made of insulated panels with highly reflective interior surfaces amplifies natural light as it is captured. And finally, an attractive ceiling lens, engineered to diffuse highly concentrated light into a broad lighting pattern, is installed on the interior ceiling. The product comes in three common sizes, 2'x2', 2'x4', 4'x4', although others are available.

As a general contractor for 30 years, Jonas Yoder, owner

Relax On Payroll Fridays

- 5 Minute Friday Payroll
- Internet Based • Encrypted
- Avoid Jail Time and Costly Fines
- Identifies All Davis Bacon Compliance Errors
- 80% Savings of Time and Money Compared to Manual Payroll Preparation



e - Mars, Inc.
"Compliance at your Fingertips"
58,000+ Construction Clients

eMarsinc.com
Ph: 480-595-0466

of JY Construction, has installed many natural daylighting systems.

“For natural lighting in roofing I wouldn’t think about installing anything but a DayStar system because the lighting and reliability is superior. It is a quality product that you can install without a leak. With other choices, you may get callbacks when they leak,” says Yoder.

According to Yoder, in other systems he has used the fiberglass construction is prone to distortion, which diminishes the natural light over time. In addition, when cracks emerge in the fiberglass, leakage occurs.

Custom Engineered Roof Curbs

One of the reasons for DayStar’s reliability is how the system is designed and engineered to prevent leaks. This begins with a properly installed essential roof curb that ensures the daylighting components have a level platform for attachment.

Rooftop curbs are raised metal frames designed for mounting structures safely to the roof. Typical skylights are comprised of a dome with pre-attached metal flashing, which the contractor cuts around to fit into an opening, and then seals with caulk. However, this arrangement is more prone to leakage. Some manufacturers rely on the contractor to find a supplier for a roof curb or even to create their own.

In contrast, DayStar’s insulated roof curbs are made of galvalume steel or aluminum, and feature continuously welded watertight seams. The curbs can be fitted to almost any roof pitch and metal rib design. The systems also come in regular slope and ridge-mounted versions. The company also supplies rib caps to fit the roof panel as well as the mastic sealant to be applied between the roof curb flange and roof metal. All these elements are crucial to DayStar’s unique engineering to create a well installed, leak-free system.

“DayStar puts out a nice curb, and they will really work with you on different configurations to make it [function well] with different roofs or roof profiles. As I’ve collaborated with them for about 15 years, I’ve asked them to change little things. They are always very adaptive to what I need, which helps to facilitate leak-free installation,” says Yoder.

Thermal Efficiency

After concerns about potential water leaks, many contractors seek a system that will prevent outdoor hot or cold air intrusion, or transfer through the components. The challenge is that typical daylighting manufacturers utilize a roof jacket which incorporates a tube like an uninsulated stove pipe that allows hot or cold air to enter.

In contrast, DayStar uses an insulated roof curb, double-glazed top dome with a vinyl thermal barrier. The system’s insulated, enhanced light shaft and lens provide a 40-50% better thermal value than other daylighting designs. In addition, the system has a low solar heat gain coefficient (SHGC) as well as U Values (a measure of insulating performance) that are over twice the thermal efficiency ratings of common skylights. This means the customer will lose less heat in the winter and gain less heat in the summer.

“The [DayStar] daylighting system insulates against indoor heat or cooling loss better than any other system I have seen,” says Yoder.

Installation Instructions

The daylighting installation process is quite simple, and a contractor does not need any special experience to perform an expert job. A general roofing contractor can read the installation manual and be certain that he understands the installation process because every detail is covered, step by step. DayStar also provides phone support for contractors. The units come as a complete package with all the materials needed for installation.

Trust Earned

If the contractor follows the instructions for the DayStar daylight system, it can provide many years of reliable service without worry over rain leakage.

According to Yoder, he originally installed 40 DayStar systems in a 24,000 sq. ft. pre-engineered steel building about 10 years ago. “Now, the same, industrial warehouse customer looking to build another 9,000 sq. ft. structure with 12 more daylight systems. In my mind, that shows their long-term value and reliability,” he concludes.

For more information on natural daylighting systems, email info@daystar1.com or call (618) 426-1868. •

BUILT FOR EVERYTHING THAT'S ON THE LINE

HUSKIETOOLS.COM

SINCE 1976



FREE OFFER - CONTACT US:
POWER@HUSKIETOOLS.COM

HIGH-PERFORMANCE
UTILITY LINEMAN
TOOLS & EQUIPMENT

THE INDUSTRY'S #1 POWER UTILITY SOLUTIONS BRAND

OVER
200 CHOICES
BATTERY
POWERED
HYDRAULIC
CUTTING & COMPRESSION
TOOLS



BATTERY PLATFORMS:
MILWAUKEE®
MAKITA®
HUSKIE®

8, 12 & 15 TON
COMPRESSION TOOLS
CUTTING TOOLS HANDLE
UP TO 2515 ACSR,
5" CU/AL, 5/8" GUY WIRE,
GROUND ROD, BOLTS,
& WIRE ROPE

SLC-9L750VC

60 TON
100 TON
200 TON
PRESSES



SINGLE ACTING
DOUBLE ACTING
STEEL, TITANIUM

NEW
JAWS



21 HAND POWERED HYDRAULIC
CUTTING & COMPRESSION
MANUAL TOOLS

INCLUDING:
8 & 12 TON COMPRESSION TOOLS
FOR W, K, U-TYPE DIES & 4-POINT
DIELESS HEADS. CUTTING TOOLS
FOR ACSR, CU, AL, GUY WIRE, EHS,
GROUND ROD, BOLTS, & WIRE ROPE



12 HIGH-PRESSURE PUMPS
BATTERY POWERED,
ELECTRIC & GAS PUMPS;
HIGH-PRESSURE HOSES
& FITTINGS

ANNOUNCING
NEW HUSKIE TOOLS
HTP2 PROLINE
BATTERY POWERED
PUMP SERIES



22 REMOTE HEADS
CUTTING and
COMPRESSION



DIES &
DIE KITS OVER
200 CHOICES

BURNDY EQUIVALENT:
W, U, P, L, & CSA DIES
KEARNEY EQUIVALENT:
8, WH-2, WH-3 DIES
ALCOA EQUIVALENT:
60 & 100 TON DIES
WIRE ROPE DIES



12
TIGER POLE
PULLER &
MATERIAL
HANDLING
PRODUCTS

HUSKIE TOOLS
CARRIES THE
INDUSTRY'S
MOST POPULAR
CABLE GRIP
SIZES



LEARN MORE



Huskie Tools is not affiliated with, authorized or endorsed by Milwaukee Electric Tool Corporation. Milwaukee listed cables and chargers are © 2012 by Huskie Tools. Milwaukee® HTP™ (HTP™) are registered trademarks of Milwaukee Electric Tool Corporation. Huskie Tools is not affiliated with, authorized or endorsed by Makita Corporation. Huskie® Trade Labels and chargers are a mark of Huskie Tools®. Makita® and LXT® are registered trademarks of Makita Corporation.

Monthly Buyer's Guide

- **Buccaneer Rope**
22319 Alabama Hwy.79
Scottsboro, AL 35768
800-358-7673
www.bucrope.com
- **Cleanfix Reversible Fans**
250 Wright Blvd.
Stratford, ON, CN N4Z1H3
866-489-3267
www.cleanfix.org
- **Conduit Repair**
761 Enterprise Dr. # 1
St. George, UT 84790
800-670-1804
www.conduitrepair.com
- **Greaves USA**
30 Industrial PK.
Centerbrook, CT. 06409
800-243-1130
www.greaves-usa.com
- **Hogg Davis**
3800 Eagle Loop
Odell, OR. 97031
855-883-4909
www.hoggdavis.com
- **Jeffrey Machine, Inc.**
3841 Industrial Dr
Birmingham, AL 35217
205-841-8600
www.jeffreymachine.com
- **Manitex USA**
3000 S. Austin Av.
Georgetown, TX. 78626
877-314-3390
www.manitex.com
- **M.B. Crushers**
8730 Technology Way
Reno, NV. 89521
855-MBCRUSH
www.mbcrusher.com
- **Morooka USA**
11191 Air Park Rd.
Ashland, VA. 23005
www.morooka.com
- **Morbark**
8507 S. Winn RD.
Winn, MI. 48896
800-831-0042
www.morbark.com
- **Ring Power**
9901 Ringhaven DR.
Orlando, FL. 32824
407-855-6195
www.ringpower.com
- **Rome Plows**
475 N.6th. St.
Cedartown, GA. 30125
770-748-4450
www.romeplow.com
- **Terex Utilities**
1901 -14th AV. N.W.
Watertown, SD. 57201
800-233-2972
www.terex.com
- **U.T.V. INTERNATIONAL**
8850 Danley Rd.
Quebec, CN. H4T1M4
514-345-0990
www.utvint.com
- **Yale Cordage**
77 Industrial Park Rd.
Saco, ME. 04072
207-282-3396
www.yalecordage.com



Always **250+**
Specialized Trucks & Equip.
Delivery Throughout the U.S.A.

Los Angeles, CA

800.896.2480

MONTHLY RENTALS AVAILABLE



HOGG-DAVIS HP-650
Cable Pulling Trailer

Stock # 14176-8

CHEVROLET Diesel
Texoma TX-245B Digger Derrick

Stock #14319-8



FORD Diesel Champion
Cable Scraper
Hi-Speed Cable Removal

Stock # 14181-8



Sherman Reilly UnderDawg
Bull Wheel Puller

Stock # 14549-8

www.alasher.com

Ad Index

| Company | Pg. | Website |
|---------------------------|-----|-------------------------|
| Asher | 23 | www.alasher.com |
| Atlantic Screen & Mfg Inc | 2 | www.atlantic-screen.com |
| Brown Bear Corp | 1 | www.brownbearcorp.com |
| Conduit Repair | 11 | www.conduitrepair.com |
| Dorlen | 24 | www.oil-alert.com |
| eMars Inc | 19 | www.emarsinc.com |
| Essex Steel | 17 | www.essexsteel.com |
| Go Light | 5 | www.golight.com |
| Huskie Tools | 21 | www.huskietools.com |
| Krenz Vent | 6 | www.krenzvent.com |
| Manitex | 3 | www.manitex.com |
| Mobile Desk Solutions | BC | www.mobiledesk.com |
| Multivibe | IBC | www.multivibe.com |
| Ring Power | 9 | www.ringpower.com |
| Rome Plow | IFC | www.romeplow.com |
| Sherman + Reily | 13 | www.sherman-reily.com |
| Sky Hook | 7 | www.skyhookmfr.com |



OIL ALERT[®] LIQUID LEAK DETECTOR

DETECT OIL LEAKS AND SPILLS...FAST!

- AVOID OPERATIONS SHUT-DOWN
- REDUCE ENVIRONMENTAL RISKS
- MINIMIZE COSTLY CLEAN-UP
- MONITOR OFF-SITE EQUIPMENT

A small amount of oil (1/32 inch) seeping under Oil Alert activates it's loud "on/off" alarm and/or relay contact output. The low profile dome shaped unit guards against undetected leakage in areas of oil lubricated / hydraulic equipment, stand-by generators, pressurized piping and fuel oil storage locations...

5 year Limited Warranty

DORLEN Products Inc.
6615 W. Layton Ave. Milwaukee, WI. 53220

Go to WWW.OIL-ALERT.COM
OR CALL: 1-800-533-6392
FOR MORE INFO!!



MULTIVIBE
Quality

*New
Product*

**Never Worry
About Gas Engine Problems Again
Just Have Your Batteries Charged**



**Screed Using A
Battery Powered Drill**

**Use Up To 12' Screed Board
Perfect For Smaller Jobs
No Emission Problems**

Drill Tested & Recommended Dewalt DC996 Hammer

Contact Your Local Multivibe Dealer or Call 1-877-220-6652 For More Information

3125 N Friendship Rd Paducah KY 42001

"When Disasters Strike, First Responders Rely On Us!"

Our complete control, communication and convenience Utility Truck Console is becoming the new standard for truck fleets of all sizes. Loaded with standard and optional features that maximize ergonomics, productivity, and fleet/telecom standards into a one exceptional Mobile Console Solution.



MOBILE **DESK**
MOBILE OFFICE SOLUTIONS
1-877-663-3375
www.mobiledesk.com