

January 2023

# NEW CONSTRUCTION

DEERE

## Products

**Klein Tools®  
Launches Heavy  
Duty Hinged  
Knee Pads for  
Comfort and  
Added  
Protection**

**John Deere Debuts Next  
Phase of Performance  
Tiering Excavators,  
Including the New Mid-  
Size 200 G-Tier**



# B BROWN BEAR



OFF HIGHWAY  
HIGH FLOTATION  
4X4 CARRIER

COMPOSTING  
ATTACHMENTS



BRUSH  
MULCHING  
ATTACHMENT

BACK-FILLING  
ATTACHMENTS



# WWW.BROWNBEARCORP.COM

641-322-4220  
sales@brownbearcorp.com

BROWN BEAR CORPORATION

CORNING, IA 50841  
www.youtube.com/c/Brownbearcorp

# ROME

Available in 10, 12, 14, and 16 foot widths



Manufacturing Heavy Duty Construction and Agricultural Equipment Since 1932

ROME Plow has been the premier name in heavy duty disc plows for over 87 years.

Available in 16, 18, 20, 24, and 30 foot widths



ROME has been manufacturing pivot dump and ejector scrapers for over 45 years for the construction and agricultural industries.



Available with 36 or 42" blades, and up to 20' wide

ROME also manufactures a full line of leveling scrapers (with and without gates) and haul road maintenance tools (with and without rollers)



Available in 18 and 22 yard versions

For more information on our products or for the closest authorized ROME dealer please contact us.

Available in 24, 28, 31, 34 and 37 Yards



770-748-4450 - [www.romeplow.com](http://www.romeplow.com)

Steel Tracks available to fit any articulating tractor.

NCP Contents • January 2023

PG 4 Klein Tools® Launches Heavy Duty Hinged Knee Pads for Comfort and Added Protection

PG 10 Visit Mazio Attachments at CONEXPO-CON/AGG 2023

PG 14 John Deere Debuts Next Phase of Performance Tiering Excavators, Including the New Mid-Size 200 G-Tier

PG 18 DICA Expands Ground Protection Product Line with SlatTrax Acquisition

PG 22 Monthly Buyer's Guide

PG 24 Ad Index



Pg 4



Vol. 23 Issue 1

**PRESIDENT**

Glen Hobson  
205-441-5591  
glen@handfmedia.net

**DIRECTOR OF ADVERTISING**

Brian Lockheart  
205-624-2182  
lockbrian692@gmail.com

**DIRECTOR OF BUSINESS**

Butch Cole  
205-624-2180  
butch@handfmedia.net

**ADMINISTRATIVE DIRECTOR**

Steven Hobson  
steven@handfmedia.net

**EDITOR**

Brandon Greenhill  
brandon@handfmedia.net

**CREATIVE/ WEB DIRECTOR**

Jacklyn Greenhill  
jacklyn@handfmedia.net

P.O. Box 1568 • Pelham, AL 35124  
Phone: 205-441-5591 • Fax: 205-624-2181  
www.newconstructionproducts.com  
info@newconstructionproducts.com



*New Construction Products™* is published twelve times a year on a monthly basis by Southern Digital Publishing, Inc. *New Construction Products™* is distributed free to qualified subscribers. Non-qualified subscription rates are \$57.00 per year in the U.S. and Canada and \$84.00 per year for foreign subscribers (surface mail). U.S. Postage paid at Birmingham, Alabama and additional mailing offices.

*New Construction Products™* is distributed to qualified owners and managers in the construction industry. Publisher is not liable for all content (including editorial and illustrations provided by advertisers) of advertisements published and does not accept responsibility for any claims made against the publisher. It is the advertiser's or agency's responsibility to obtain appropriate releases on any item or individuals pictured in an advertisement. Reproduction of this magazine in whole or in part is prohibited without prior written permission from the publisher.

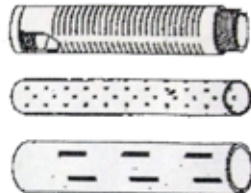
POSTMASTER: Send address changes to  
Southern Digital Publishing, Inc. P.O. Box 1568  
Pelham, AL 35124

PRINTED IN THE USA



**Atlantic Screen & Mfg., Inc.**

- Well Rehab. Products
- Manholes
- Bentonite
- Filter Sock
- Inline Chemical Mixers
- Sampling Ballers
- Clear PVC Pipe
- Locking Caps



Manufacturers of Slotted & Perforated Pipe  
ranging from 1/2" to 24" in diameter

**302-684-3197**

FAX 302-684-0643

142 Broadkill Rd. • Milton, DE 19968

www.atlantic-screen.com

email: atlantic@ce.net

# “When Disasters Strike, First Responders Rely On Us!”

Our complete control, communication and convenience Utility Truck Console is becoming the new standard for truck fleets of all sizes. Loaded with standard and optional features that maximize ergonomics, productivity, and fleet/telecom standards into a one exceptional Mobile Console Solution.



**MOBILE** DESK  
MOBILE OFFICE SOLUTIONS  
**1-877-663-3375**  
[www.mobiledesk.com](http://www.mobiledesk.com)



# Klein Tools® Launches Heavy Duty Hinged Knee Pads for Comfort and Added Protection

Klein Tools ([www.kleintools.com](http://www.kleintools.com)), for professionals since 1857, introduces the Heavy Duty Hinged Knee Pads, designed to provide a durable, comfortable knee pad solution for the most rugged and tough environments.

#### **Heavy Duty Hinged Knee Pads (Cat. No. 60491)**

- Heavy Duty Hinged Knee Pads contain a gel and foam padded pocket to maximize pressure distribution for all day comfort
- Large knee pad surface provides stability and rounded edges provide agility when moving side to side
- Hinged thigh strap keeps knee pads in place during use
- Adjustable quick-fasten buckle plus hook and loop strap provide secure fit
- Heavy duty stitching, hard plastic and metal rivets for durability

# Manitex

VISIT US AT: [WWW.MANITEX.COM](http://WWW.MANITEX.COM)  
STRENGTH. DEPENDABILITY. MANITEX.

## THE RIGHT TOOL FOR THE JOB

THE M150 IS IDEAL FOR PLANT, OIL REFINERY OR WAREHOUSE APPLICATIONS. SITTING AT JUST OVER 11 FT. TALL THE M150 CAB-DOWN IS IDEAL WHEN SPACE IS LIMITED. WITH ITS COMPACT SIZE THIS LOW-PROFILE CRANE IS DESIGNED FOR HIGH PERFORMANCE WHILE REMAINING VERSATILE TO AN ARRAY OF WORK ENVIRONMENTS.

### M150 - 15 TON

- ✓ Optimal operator comfort
- ✓ Fully adjustable controls
- ✓ Best in class load chart

**Stand out safety features!**  
*(Override key switch, rear view camera, ext. LMI utilization light)*



- Perfect for jobsites that require heavy duty protection for the knee
- Sold in pairs

“Professionals in various trades, both indoor and outdoor, require work on or near the ground, which can cause stress and pain to their knees,” says Chandler Duchaine, product manager at Klein Tools. “These new Heavy Duty Hinged Knee Pads are perfect for all-day heavy duty knee protection. The gel and foam padded pockets distribute pressure for comfort, and the large knee pad surface provides stability and agility when moving side to side. Plus, an adjustable quick-fasten buckle and hook means a secure fit.”

For more information on Klein Tools safety products, visit [www.kleintools.com/safety](http://www.kleintools.com/safety) or search for #NewKleins on social media.

[www.kleintools.com/safety](http://www.kleintools.com/safety)



# Get Cool!




**Extend transformer life!**

**Increase transformer capacity up to 166%!**

- expert technical assistance
- low sound levels
- energy-efficient motors
- large inventory
- one-piece cast aluminum blades
- galvanized or stainless steel guards





**quality engineered, performance tested**

p.o. box 187 germantown, wisconsin 53022

262.255.2310

[www.krenzvent.com](http://www.krenzvent.com)





# **CROSS COUNTRY**

## INFRASTRUCTURE SERVICES INC.

### Your Source for Construction Equipment Rentals and Supplies

**SUPPLIES INCLUDE:** Abrasive & Cutting Tools > Environmental > Safety Products > Valves, Fasteners & Fittings > Lifting & Rigging > Piggng Products > Pipe Testing Equipment > and Much More

**EQUIPMENT RENTALS INCLUDE:**



Pumps



Padding Machines



Pipelayers



Flat Bed Tractors



Excavators



Trenchers



Dozers

For Rentals And Supplies Visit [CrossCountryIS.com](http://CrossCountryIS.com) Or Call **1-855-955-CCIS (2247)**

# Rugged Dependability

STANDARD IN EVERY MACHINE WE BUILD!

Hogg & Davis has been proudly manufacturing utility line equipment for more than half a century.



Our trusted products are part of the fleets and tool cribs of nearly every investor-owned power and communications company in the United States and Beyond.



HOGG & DAVIS, Inc.

HOGG & DAVIS, INC.

3800 EAGLE LOOP • ODELL, OR 97044

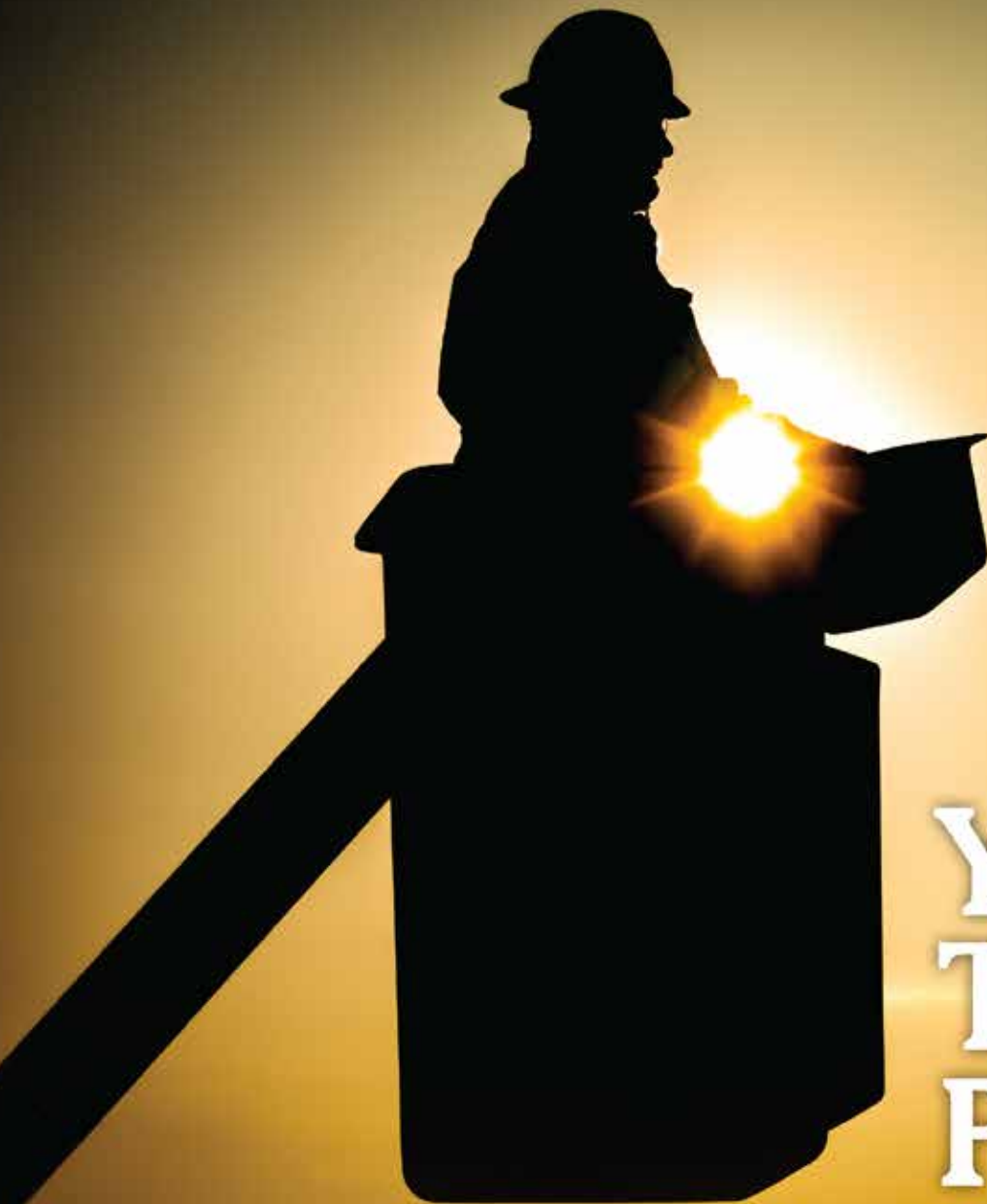
TEL 541.354.1001 • FAX 541.354.1080

WWW.HOGGDAVIS.COM

# Relax On Payroll Fridays

- 5 Minute Friday Payroll
- Internet Based • Encrypted
- Avoid Jail Time and Costly Fines
- Identifies All Davis Bacon Compliance Errors
- 80% Savings of Time and Money Compared to Manual Payroll Preparation





# Your Trusted Partner.

Partnering with Ring Power gives you access to a vast range of jobsite-tough products to round out your fleet. Ring Power carries machines from dozens of manufacturers to ensure you always have access to the right tools for your job.

Short-term, long-term or rental-purchase options available.



1-844-766-RENT • [Utility.RingPower.com](http://Utility.RingPower.com)



Visit Mazio  
Attachments  
at CONEXPO-  
CON/AGG 2023

*Learn About the Company's Newest Innovative Attachments for Producers and Contractors*

Mazio will have its experts on hand in the West Hall, at booth # W43211, during CONEXPO-CON/AGG, March 14-18, 2023, in Las Vegas. Visitors will learn how Mazio's innovative attachments will help them save time and money in the quarry and on the jobsite. Mazio's newest innovation for 2023 is the Tilt-Rotator for excavators. Tilt-Rotators have seen great interest in Europe, and they are growing in popularity within the US. These supplemental attachments work with excavator tools, such as grapples, buckets, or shears, to provide more versatility and precision. They not only rotate 360°, but they also tilt side-to-side by up to 55°. This ability reduces the need for the operator to move the excavator while performing tasks — increasing productivity and efficiency. The Mazio Tilt-Rotator features a hydraulic quick coupler that allows the operator to remain in the cab while changing tools. It enjoys maintenance-free operation, with no grease points and no cylinders. It allows access to narrow spaces and

800.557.0098 | [golight.com](http://golight.com)

# GO LIGHT



DURABLE  
VERSATILE



POWERFUL  
GUARANTEED

on urban projects with large or small equipment. In addition to the Tilt-Rotator, the Mazio booth will feature its complete line of demolition tools; hydraulic breakers; and wear tips for grinders, breakers, shears, crushers, pulverizers, and processors.

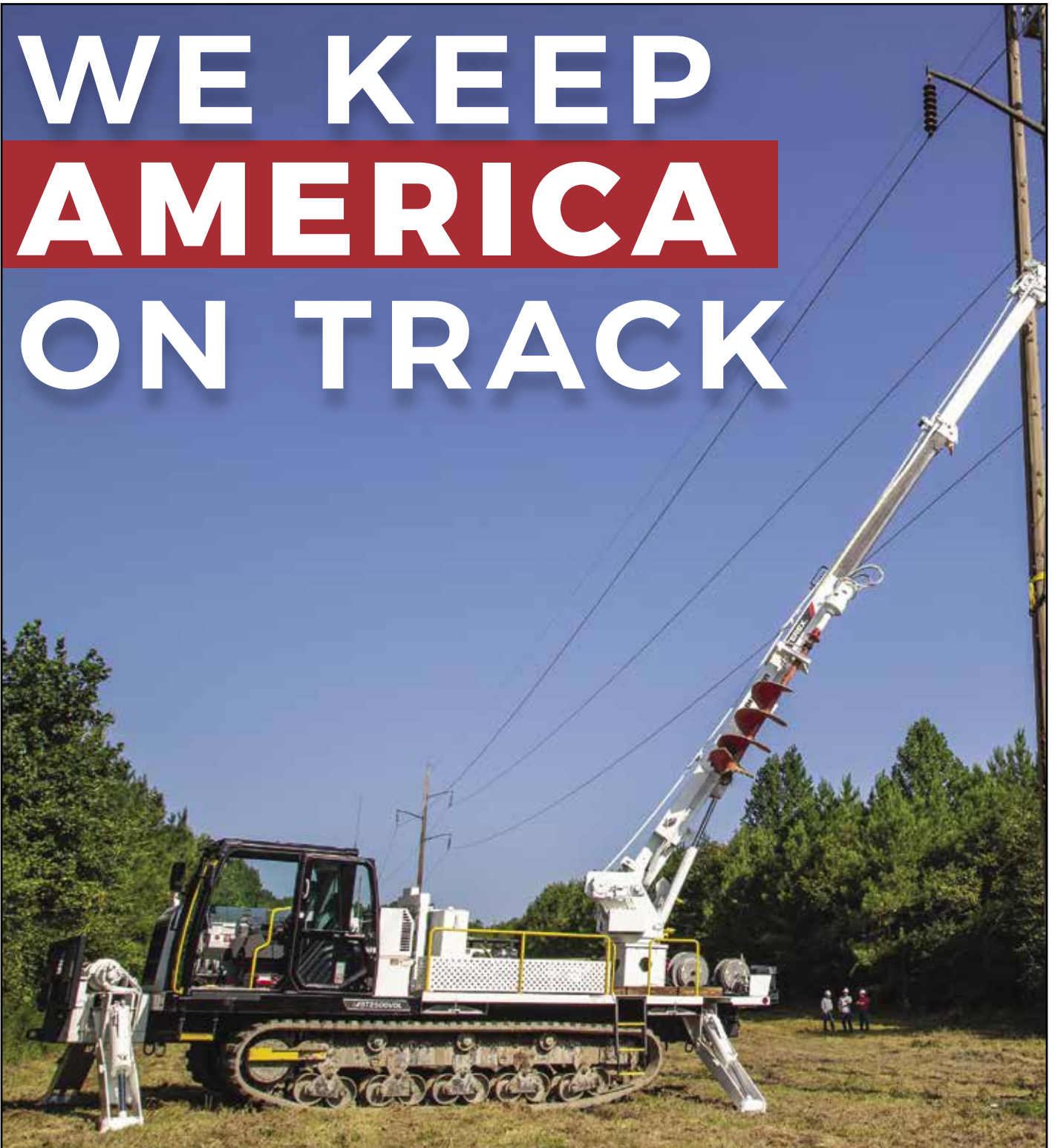
Mazio's experts work in tandem with its dealers to provide producers and contractors with guidance on ways to increase their productivity and profits, helping them to ensure success.

Mazio Attachments LLC is an Italian manufacturer of specialized attachments for the construction, demolition, recycling, mining, aggregates, excavation, scrap, and forestry industries. With engineering and manufacturing facilities located in the United States, Italy, and Colombia, Mazio designs its distinctive purple attachments to work with all makes and sizes of carrier machine, from hydraulic excavators, skid steer loaders, and backhoes to wheel loaders, tele-handlers, and more. Mazio attachments are available through a growing dealer network or direct, depending on location. The company offers immediate delivery for spare parts and service, and field training for operators. For more information, call +1 (561) 766-0899, email [sales@mazio.us](mailto:sales@mazio.us), or visit [www.mazio.us](http://www.mazio.us).

**[www.mazio.us](http://www.mazio.us)** •



# WE KEEP AMERICA ON TRACK



**MOROOKA**

UTILITY CARRIERS

Call: 800-365-7260

OR

Visit: [morookacarriers.com](http://morookacarriers.com)



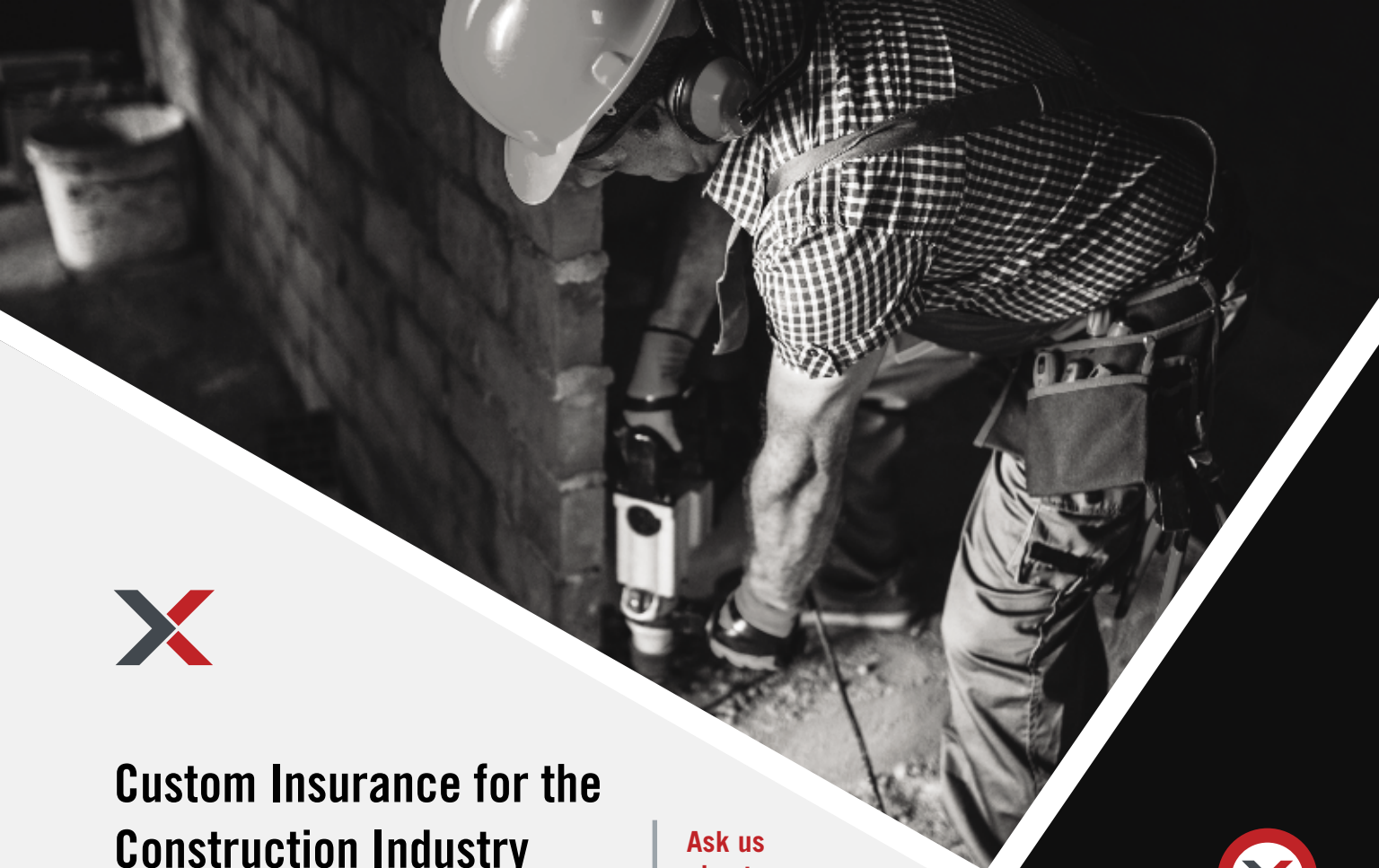
## John Deere Debuts Next Phase of Performance Tiering Excavators, Including the New Mid-Size 200 G-Tier

*John Deere completes lineup of P-Tier excavators as part of Performance Tiering portfolio.  
The 200 G-Tier Excavator launches as newest mid-size model.*

Aimed to deliver a range of products at different levels of capability and user experience, John Deere debuts its latest P-Tier and G-Tier excavator models to its portfolio of mid-size machines. As part of its Performance Tiering Strategy, John Deere has added the 135, 210, 245, 250, 300 and 345 models to its lineup of P-Tier excavators. In addition, John Deere is introducing a brand-new model to its family of G-Tier excavators: the 200 G-Tier.

“Every job site is different, and our customers want excavator options that can be personalized by performance, price and operator experience,” said Justin Steger, solutions marketing manager, John Deere Construction & Forestry. “Our newly expanded lineup of P- and G-Tier excavators, including the brand-new 200 G-Tier, provides machine solutions built for various applications and jobs to enhance profitability and efficiency.”

For customers looking to enhance their job site productivity, the P-Tier excavator models can be counted on to produce at high levels, day in and day out. These models boast advanced features and deliver exceptional performance, efficiency and comfort. Offering improved front-joint durability, the P-Tier mid-size models, including the 135, 210, 245, 250, 300 and 345, promote better performance and operator stability. With grease points at the arm-tip for easy greasing, extended uptime and better torque retention at the clamp, which reduces the likelihood of the front hydraulic pipes moving, the new P-Tier



## Custom Insurance for the Construction Industry

With **XINSURANCE**, You Get...

- All-In-One Approach
- Agent Friendly
- Limits up to \$10MM
- Property & Casualty
- Professional Liability
- Commercial Auto Liability  
(available in most states)
- Products Liability
- Exclusions/Gaps in Current Coverage & More

XINSURANCE is powered by Evolution Insurance Brokers, LC ("EIB"), an excess and surplus lines insurance brokerage. XINSURANCE is a DBA of EIB, which is domiciled in and has its principal place of business in Sandy, Utah. This insurance product is offered by an unlicensed surplus lines insurer. The NPN for EIB is 5464658 and CA license number is OH93938.

Ask us  
about our new  
coverage option –  
Communicable  
Disease  
Liability



To get your free  
custom insurance  
quote for the  
construction industry,  
visit [www.xinsurance.com](http://www.xinsurance.com)

You can also contact  
Logan Fitzgerald directly at  
**801.304.5562** or  
[loganf@xinsurance.com](mailto:loganf@xinsurance.com)

# XINSURANCE

models were designed to provide optimal performance and easier serviceability. In addition, the redesigned boom-foot bushings offer enhanced durability for an extended machine life span.

The latest addition to the John Deere lineup of mid-size excavators is the brand-new 200 G-Tier. Helping to enhance efficiency and reliability without sacrificing power or torque, the PowerTech 4.5-liter engine on the 200 G-Tier delivers optimal performance for operators of all skill levels. In addition, the easy-to-maintain, high-uptime exhaust filters help decrease downtime for service while the in-monitor adjustable flow and pressure auxiliary hydraulics can be easily controlled using the auxiliary function lever.

The Powerwise Plus hydraulic-management system in 200 G-Tier combines extra ability with smooth control and pinpoint finesse. Through intuitive technology, the system delivers on-demand power. Offering precise pump flow, the pilot controls are metered, helping to provide reliable, fuel-efficient machine performance. With the push of a button on the joystick, operators can boost power and toggle on automatic boom-up and lifting functions. In addition, the optional hydraulic single pedal propel system moves the machine when and where you need it to without having to articulate both hand levers and both foot pedals, making for easier operation.

Customers looking to make the most of their machines can benefit from two factory-installed high-pressure, high-flow auxiliary packages, which deliver additional hydraulic capability to power attachments. Aimed to support operator ease of use, the ergonomically correct, short-throw

pilot joysticks on the 200 G-Tier provide smooth, precise fingertip control with less movement or effort. Designed to accommodate different operators with the simple flip of a lever, the control pattern-change valve comes standard on the 200 G-Tier, helping to provide consistency on the job. Also standard on the 200 G-Tier is the pattern-control switch, which is conveniently accessible at ground level.

The lineup of John Deere G- and P-Tier excavators can be equipped with a full line of buckets, which are offered to meet the needs of a wide variety of applications. The new hydraulic coupler-ready option includes factory-installed hydraulic plumbing to the end of the arm, additional coupler controls integrated into a switch in the cab and a quick and efficient coupler installation capability. Popular in the underground segment, couplers allow excavators to efficiently switch attachments and get more productive working hours each day.

To learn more about the full lineup of excavators within the John Deere Performance Tiering Strategy, please visit [www.JohnDeere.com](http://www.JohnDeere.com) or visit your local dealer.

**[www.johndeere.com](http://www.johndeere.com)** •





# SAFELY Lifts Up To 500 lbs!

- Ergonomic
- Portable
- Lightweight
- Meets OSHA & ASME Requirements

## Customized Safety Lifting Devices For Any Application

Available in both  
**CHAIN & CABLE**  
Configurations



The Sky Hook is your personal safety lifting solution, preventing lifting injuries while saving you both time and money!

**800-4-SKYHOOK**

800-475-9466 • 208-365-5770

[www.skyhookmfr.com](http://www.skyhookmfr.com)

**SKY HOOK**

ATTCO, Inc. OSA  
by SYCLONE ATTCO SERVICE



## DICA Expands Ground Protection Product Line with SlatTrax Acquisition

DICA announces the acquisition of SlatTrax, the next generation of ground protection and temporary access road for a variety of markets, including general construction, utilities, public works departments, grounds care, and hardscape contractors, to name a few. SlatTrax is an engineered ground protection solution that can be deployed mechanically or manually. Both options allow users to deploy and retrieve the roadway quickly.

“This acquisition is a natural expansion of the DICA brand. SlatTrax provides temporary worksite access, minimizes damage to lawns, and gives crews a stable work surface. Durable and easy to handle, SlatTrax is a unique solution for companies that are working with light and medium duty equipment in a wide variety of industries,” said Kris Koberg, CEO of DICA.

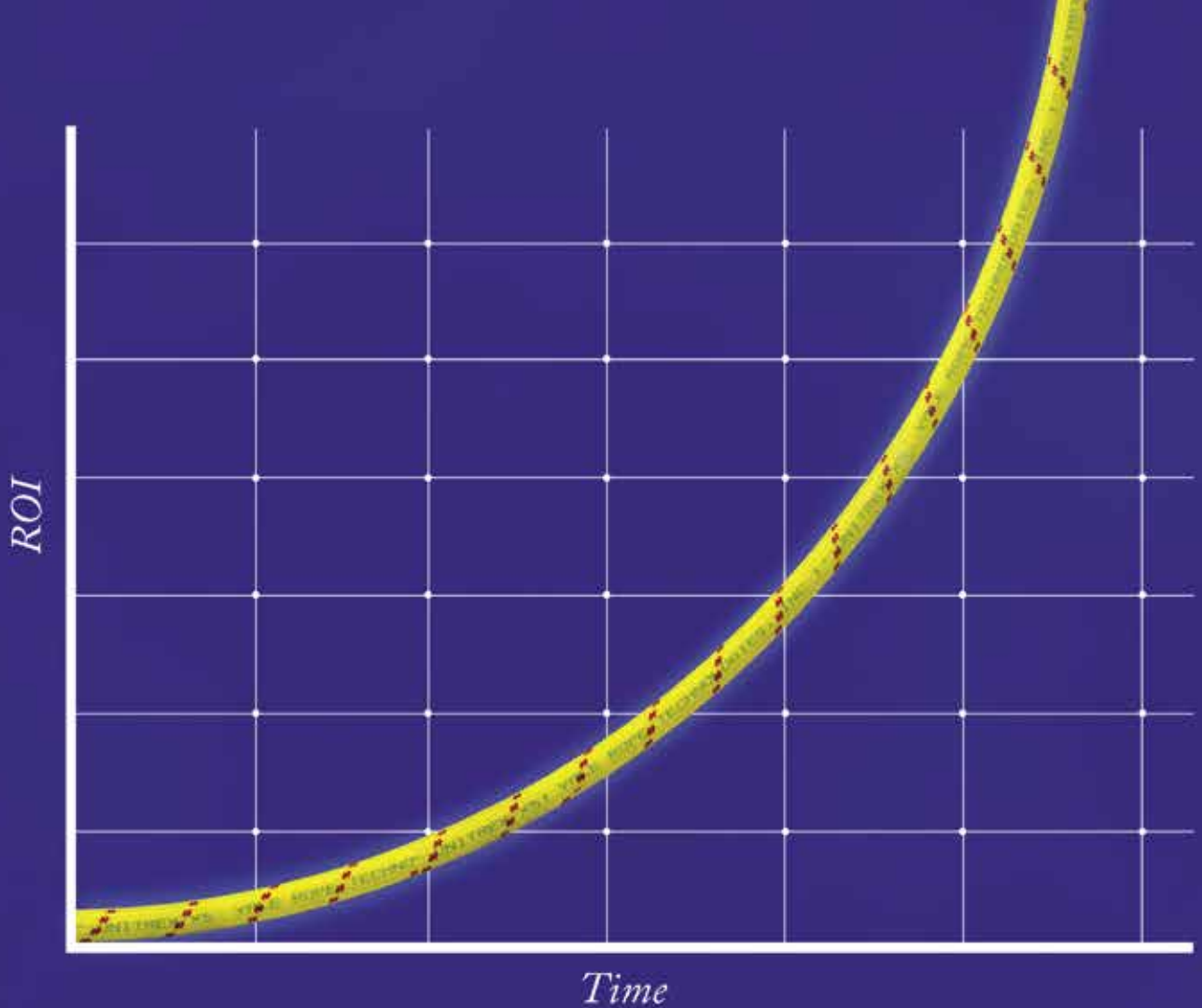
DICA acquired SlatTrax from Gary Ringus who was the founder and owner of the company. “I appreciate this opportunity to further develop SlatTrax products with a company that is aligned with my vision to create efficient and ergonomic ground protection solutions. Our common goal is to improve day-to-day operations for construction and maintenance crews,” said Ringus. DICA has assumed all ongoing operations for the Slat-

Trax brand, and Ringus remains involved, working as a consultant and a manufacturer’s representative during the transition.

“SlatTrax is not a mat—it’s a temporary roadway made up of 12.5 ft. and 25 ft. sections. The sectional design makes the construction of the temporary roads highly efficient because the slats can be separated without the use of tools or easily combined to create longer roads,” said Kevin Koberg, Director of Marketing at DICA. The roadway can be deployed from a spool attachment on a skid steer or manually moved into place by one or two people using built-in straps. SlatTrax is made of ¾-inch recycled plastic slats which are connected with spine and capture joints that enables articulation (rolling) and arcing (curving) of the roadway.

Earlier this year, DICA moved to a new facility which doubled the company’s manufacturing capabilities. “Our new facility enables us to increase SlatTrax product availability and shorten lead times. We are building inventory, and soon, all standard products will be available to ship from stock,” said Kris Koberg.

[www.dicausa.com](http://www.dicausa.com) •



## Unitrex XS™ Max Wear. Unmatched performance in the field and in the boardroom.

Electric line stringing is easier and more economical with Unitrex™. Made with a core of Honeywell Spectra®, it is up to 10 times lighter than steel, while delivering comparable strength. The urethane-coated polyester jacket provides excellent abrasion resistance for great productivity that lasts.

To learn more, visit [www.yalecordage.com](http://www.yalecordage.com)

**YALE CORDAGE**  
Performance. Passion. Possibilities.

77 Industrial Park Road | Saco, Maine 04072 | p (207) 282-3396, f (207) 282-4620



# STRUCTURAL STEEL CO., INC.

## Pre-Engineered Buildings Built to Withstand The Rugged Northeast Winters

- Commercial, Industrial and Agricultural Buildings Built to Satisfy Your Building Needs
  - Pre-Engineered Steel Packages
  - Pre-Engineered Post Frame Packages
  - Mini Storage Buildings



*Call For a Quote On  
Your Next Project*

**We Manufacture 26 & 29 ga.  
Steel Roofing & Siding**



# STRUCTURAL STEEL CO., INC.



607 Rt. 13 S, Cortland, NY 13045

**National: 1-800-323-7739**



(607) 753-9384 • Fax: (607) 753-6272 • [www.essexsteel.com](http://www.essexsteel.com)



# *The New Standard for Linemen*

At Tallman Equipment, our priority is to set the standard in the electric transmission and distribution industry with an all-inclusive approach to serving our customers. Our vision to deliver a trio of quality, convenience, and reliability is driven by listening and adapting to the needs of our customers. As the industry changes, so does Tallman. As a result, Tallman Equipment has become a unique company within our industry offering a full range of professional services including tool sales, product distribution, rentals, and repair. Tallman is already a trusted name in stringing blocks, cable assemblies, fiberglass, and rope products – and we are excited to announce the addition of our new Rubber Goods Testing Lab.

## *Our Services Include:*

**Groundset & Jumperset Manufacturing, Repair & Refurbishing**

**Transformer Sling Manufacturing & Rope Repair**

**Battery Power Tool & Equipment Repair**

**Fiberglass Tool Testing, Repair & Refinishing**

**Tool & Equipment Rental**

**Rubber Goods Testing & Refurbishment**



*Trust* **TALLMAN**

[www.tallmanequipment.com](http://www.tallmanequipment.com)

Call Toll Free: 877-860-5666

International: 630-860-5666

# Monthly Buyer's Guide

---

- **Buccaneer Rope**  
22319 Alabama Hwy.79  
Scottsboro, AL 35768  
800-358-7673  
[www.bucrope.com](http://www.bucrope.com)
- **Cleanfix Reversible Fans**  
250 Wright Blvd.  
Stratford, ON, CN N4Z1H3  
866-489-3267  
[www.cleanfix.org](http://www.cleanfix.org)
- **Conduit Repair**  
761 Enterprise Dr. # 1  
St. George, UT 84790  
800-670-1804  
[www.conduitrepair.com](http://www.conduitrepair.com)
- **Greaves USA**  
30 Industrial PK.  
Centerbrook, CT. 06409  
800-243-1130  
[www.greaves-usa.com](http://www.greaves-usa.com)
- **Hogg Davis**  
3800 Eagle Loop  
Odell, OR. 97031  
855-883-4909  
[www.hoggdavis.com](http://www.hoggdavis.com)
- **Jeffrey Machine, Inc.**  
3841 Industrial Dr  
Birmingham, AL 35217  
205-841-8600  
[www.jeffreymachine.com](http://www.jeffreymachine.com)
- **Manitex USA**  
3000 S. Austin Av.  
Georgetown, TX. 78626  
877-314-3390  
[www.manitex.com](http://www.manitex.com)
- **M.B. Crushers**  
8730 Technology Way  
Reno, NV. 89521  
855-MBCRUSH  
[www.mbcrusher.com](http://www.mbcrusher.com)
- **Morooka USA**  
11191 Air Park Rd.  
Ashland, VA. 23005  
[www.morooka.com](http://www.morooka.com)
- **Morbark**  
8507 S. Winn RD.  
Winn, MI. 48896  
800-831-0042  
[www.morbark.com](http://www.morbark.com)
- **Ring Power**  
9901 Ringhaven DR.  
Orlando, FL. 32824  
407-855-6195  
[www.ringpower.com](http://www.ringpower.com)
- **Rome Plows**  
475 N.6th. St.  
Cedartown, GA. 30125  
770-748-4450  
[www.romeplow.com](http://www.romeplow.com)
- **Terex Utilities**  
1901 -14th AV. N.W.  
Watertown, SD. 57201  
800-233-2972  
[www.terex.com](http://www.terex.com)
- **U.T.V. INTERNATIONAL**  
8850 Danley Rd.  
Quebec, CN. H4T1M4  
514-345-0990  
[www.utvint.com](http://www.utvint.com)
- **Yale Cordage**  
77 Industrial Park Rd.  
Saco, ME. 04072  
207-282-3396  
[www.yalecordage.com](http://www.yalecordage.com)



### ALL JACK™

Increase productivity and decrease fatigue using iTOOLco's All Jack™. Install pipe, lights, cabinets, drywall, temporary dust barriers and much more with this innovative jack designed to lift and support the weight of your workpiece while you anchor it into position.

High ceilings and ladder work are not a problem for this dynamic tool. Reach from 58" to a staggering height of 13'6". The industrial gas shock ensures a snug, stable support that stays in place while you complete the installation. Once your workpiece is secured into place, simply remove the All Jack™ by releasing the shock. More powerful than a typical support pole, the All Jack's gas shock can handle your most challenging jobs.



SCAN QR

### CORDLESS CANNON 3K™

Speed, Versatility, and performance are all yours with iTOOLco's Cordless Cannon 3K™. This portable 3,000 lb. puller is intuitively designed to handle all of your day-to-day wire pulls.

The built-in capstan switch automatically turns the puller on and off. Simply tug on the rope to start the pull and slack off the rope to shut it down.

Delivers dynamic performance in remote locations or areas where power is not yet available.

The high-capacity rechargeable battery is long-lasting and delivers maximum power. The Cannon 3K™ will even chew through a medium size run of 4 - 3/5 in 3" conduit with 4 - 90s 220' long in record time and still have half the battery life for your next pull.

SCAN QR



**FOLLOW US:**



## Ad Index

Company	Pg.	Website
Atlantic Screen & Mfg Inc	2	www.atlantic-screen.com
Brown Bear Corp	IFC	www.brownbearcorp.com
Cross Country	6	www.crosscountryis.com
Dorlen	24	www.oil-alert.com
eMars Inc	8	www.emarsinc.com
Essex Steel	20	www.essexsteel.com
Go Light	11	www.golight.com
Hogg Davis	7	www.hoggdavis.com
Huskie Tools	IBC	www.huskiertools.com
iToolco	23	www.itoolco.com
Manitex	5	www.manitex.com
Mobile Desk Solutions	3	www.mobiledesk.com
Morooka	13	www.morooka.com
Ring Power	9	www.ringpower.com
Rome Plow	1	www.romeplow.com
Sherman Reily	BC	www.sherman-reily.com
Sky Hook	17	www.skyhookmfr.com
Tallman	21	www.tallmanequipment.com
X Insurance	15	www.xinsurance.com
Yale Cordage	19	www.yalecordage.com



### **OIL ALERT<sup>®</sup>** LIQUID LEAK DETECTOR

**DETECT OIL LEAKS AND SPILLS...FAST!**

- **AVOID OPERATIONS SHUT-DOWN**
- **REDUCE ENVIRONMENTAL RISKS**
- **MINIMIZE COSTLY CLEAN-UP**
- **MONITOR OFF-SITE EQUIPMENT**

A small amount of oil (1/32 inch) seeping under Oil Alert activates it's loud "on/off" alarm and/or relay contact output. The low profile dome shaped unit guards against undetected leakage in areas of oil lubricated / hydraulic equipment, stand-by generators, pressurized piping and fuel oil storage locations...

**5 year Limited Warranty**

**DORLEN** Products Inc.  
6615 W. Layton Ave. Milwaukee, WI. 53220

**Go to [WWW.OIL-ALERT.COM](http://WWW.OIL-ALERT.COM)**  
**OR CALL: 1-800-533-6392**  
**FOR MORE INFO!!**



# BUILT FOR EVERYTHING THAT'S ON THE LINE

HUSKIETOOLS.COM

SINCE 1976



FREE OFFER - CONTACT US:  
POWER@HUSKIETOOLS.COM

HIGH-PERFORMANCE  
UTILITY LINEMAN  
TOOLS & EQUIPMENT

## THE INDUSTRY'S #1 POWER UTILITY SOLUTIONS BRAND

OVER  
**200 CHOICES**  
BATTERY  
POWERED  
HYDRAULIC  
CUTTING & COMPRESSION  
TOOLS



BATTERY PLATFORMS:  
MILWAUKEE®  
MAKITA®  
HUSKIE®

8, 12 & 15 TON  
COMPRESSION TOOLS  
CUTTING TOOLS HANDLE  
UP TO 2515 ACSR,  
5" CU/AL, 5/8" GUY WIRE,  
GROUND ROD, BOLTS,  
& WIRE ROPE

**60 TON**  
**100 TON**  
**200 TON**  
PRESSES



SINGLE ACTING  
DOUBLE ACTING  
STEEL, TITANIUM

NEW  
JAWS



**21** HAND POWERED HYDRAULIC  
CUTTING & COMPRESSION  
MANUAL TOOLS

INCLUDING:  
8 & 12 TON COMPRESSION TOOLS  
FOR W, K, U-TYPE DIES & 4-POINT  
DIELESS HEADS. CUTTING TOOLS  
FOR ACSR, CU, AL, GUY WIRE, EHS,  
GROUND ROD, BOLTS, & WIRE ROPE



**12** HIGH-PRESSURE PUMPS  
BATTERY POWERED,  
ELECTRIC & GAS PUMPS;  
HIGH-PRESSURE HOSES  
& FITTINGS

ANNOUNCING  
NEW HUSKIE TOOLS  
HTP2 PROLINE  
BATTERY POWERED  
PUMP SERIES



**22** REMOTE HEADS  
CUTTING and  
COMPRESSION



DIES &  
DIE KITS OVER  
**200 CHOICES**

BURNDY EQUIVALENT:  
W, U, P, L, & CSA DIES  
KEARNEY EQUIVALENT:  
8, WH-2, WH-3 DIES  
ALCOA EQUIVALENT:  
60 & 100 TON DIES  
WIRE ROPE DIES



**12**  
TIGER POLE  
PULLER &  
MATERIAL  
HANDLING  
PRODUCTS

HUSKIE TOOLS  
CARRIES THE  
INDUSTRY'S  
MOST POPULAR  
CABLE GRIP  
SIZES



LEARN MORE



Huskie Tools is not affiliated with, authorized or endorsed by Milwaukee Electric Tool Corporation. Milwaukee listed cables and chargers are © 2012 by Huskie Tools. Milwaukee® HTP2 PROLINE™ are registered trademarks of Milwaukee Electric Tool Corporation. Huskie Tools is not affiliated with, authorized or endorsed by Makita Corporation. Huskie Tools cables and chargers are © 2012 by Huskie Tools. Makita and LXT are registered trademarks of Makita Corporation.

# TRANSFORM YOUR PULL WITH THE ALL NEW ELECTRIC DUCT DAWG



Electrification of Sherman+Reilly equipment is transforming customer expectations, with an all-electric drivetrain built to exceed all-day use, no matter how tough the job gets. The On-board Rapid Recharge System by S+R™ provides superior performance and automatic battery management to ensure every job is completed without interruption or concern for battery capacity. Plus, receive real time industry leading support with S+R Telematics™ at no additional cost.

## INVENTING WHAT'S NEXT



SHERMAN-REILLY.COM