


October 2022

NEW CONSTRUCTION Products



**John Deere Continues
Performance Tiering
Rollout with Launch
of Large Wheel
Loader Line**

**CM Labs brings Trimble GPS capabilities to Excavator,
Dozer, and Motor Grader Simulation Training Packs**

INNOVATIONS

Faster Safer Workspace

iTOOLco.



ALL JACK™

Increase productivity and decrease fatigue using iTOOLco's All Jack™. Install pipe, lights, cabinets, drywall, temporary dust barriers and much more with this innovative jack designed to lift and support the weight of your workpiece while you anchor it into position.

High ceilings and ladder work are not a problem for this dynamic tool. Reach from 58" to a staggering height of 13'6". The industrial gas shock ensures a snug, stable support that stays in place while you complete the installation. Once your workpiece is secured into place, simply remove the All Jack™ by releasing the shock. More powerful than a typical support pole, the All Jack's gas shock can handle your most challenging jobs.



SCAN QR

CORDLESS CANNON 3K™

Speed, Versatility, and performance are all yours with iTOOLco's Cordless Cannon 3K™. This portable 3,000 lb. puller is intuitively designed to handle all of your day-to-day wire pulls.

The built-in capstan switch automatically turns the puller on and off. Simply tug on the rope to start the pull and slack off the rope to shut it down.

Delivers dynamic performance in remote locations or areas where power is not yet available.

The high-capacity rechargeable battery is long-lasting and delivers maximum power.

The Cannon 3K™ will even chew through a medium size run of 4 - 350 in 3" conduit with 4 - 90s 220' long in record time and still have half the battery life for your next pull.

SCAN QR



FOLLOW US:



ROME

Available in 10, 12, 14, and 16 foot widths



Manufacturing Heavy Duty Construction and Agricultural Equipment Since 1932

ROME Plow has been the premier name in heavy duty disc plows for over 87 years.

Available in 16, 18, 20, 24, and 30 foot widths



ROME has been manufacturing pivot dump and ejector scrapers for over 45 years for the construction and agricultural industries.



Available with 36 or 42" blades, and up to 20' wide

ROME also manufactures a full line of leveling scrapers (with and without gates) and haul road maintenance tools (with and without rollers)



Available in 18 and 22 yard versions

For more information on our products or for the closest authorized ROME dealer please contact us.

Available in 24, 28, 31, 34 and 37 Yards



Steel Tracks available to fit any articulating tractor.

NCP Contents • October 2022

PG 4 Compact Construction Equipment Takes the Electric Lead

PG 10 John Deere Continues Performance Tiering Rollout with Launch of Large Wheel Loader Line

PG 18 CM Labs brings Trimble GPS capabilities to Excavator, Dozer, and Motor Grader Simulation Training Packs

PG 22 Monthly Buyer's Guide

PG 24 Ad Index



Pg 10



Vol. 22 Issue 10

PRESIDENT

Glen Hobson
205-441-5591
glen@handfmedia.net

DIRECTOR OF ADVERTISING

Brian Lockheart
205-624-2182
lockbrian692@gmail.com

DIRECTOR OF BUSINESS

Butch Cole
205-624-2180
butch@handfmedia.net

ADMINISTRATIVE DIRECTOR

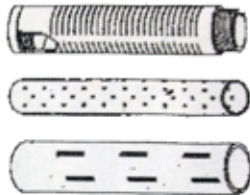
Steven Hobson
steven@handfmedia.net

EDITOR

Brandon Greenhill
brandon@handfmedia.net

CREATIVE/ WEB DIRECTOR

Jacklyn Greenhill
jacklyn@handfmedia.net



Atlantic Screen & Mfg., Inc.

- Well Rehab. Products
- Manholes
- Bentonite
- Filter Sock
- Inline Chemical Mixers
- Sampling Ballers
- Clear PVC Pipe
- Locking Caps

Manufacturers of Slotted & Perforated Pipe ranging from 1/2" to 24" in diameter

302-684-3197

FAX 302-684-0643

142 Broadkill Rd. • Milton, DE 19968

www.atlantic-screen.com

email: atlantic@ce.net

P.O. Box 1568 • Pelham, AL 35124
Phone: 205-441-5591 • Fax: 205-624-2181
www.newconstructionproducts.com
info@newconstructionproducts.com



New Construction Products™ is published twelve times a year on a monthly basis by Southern Digital Publishing, Inc. *New Construction Products™* is distributed free to qualified subscribers. Non-qualified subscription rates are \$57.00 per year in the U.S. and Canada and \$84.00 per year for foreign subscribers (surface mail). U.S. Postage paid at Birmingham, Alabama and additional mailing offices.

New Construction Products™ is distributed to qualified owners and managers in the construction industry. Publisher is not liable for all content (including editorial and illustrations provided by advertisers) of advertisements published and does not accept responsibility for any claims made against the publisher. It is the advertiser's or agency's responsibility to obtain appropriate releases on any item or individuals pictured in an advertisement. Reproduction of this magazine in whole or in part is prohibited without prior written permission from the publisher.

POSTMASTER: Send address changes to
Southern Digital Publishing, Inc. P.O. Box 1568
Pelham, AL 35124
PRINTED IN THE USA

Rugged Dependability

STANDARD IN EVERY MACHINE WE BUILD!

Hogg & Davis has been proudly manufacturing utility line equipment for more than half a century.



Our trusted products are part of the fleets and tool cribs of nearly every investor-owned power and communications company in the United States and Beyond.



HOGG & DAVIS, Inc.

HOGG & DAVIS, INC.

3800 EAGLE LOOP • ODELL, OR 97044
TEL 541.354.1001 • FAX 541.354.1080

WWW.HOGGDAVIS.COM

Compact Construction Equipment Takes the Electric Lead

By the Association of Equipment Manufacturers (AEM)

When it comes to alternative-powered construction equipment, there's little doubt that electric-powered compact machines have gained the most traction.

"The 48-volt battery packs and the duty cycles of compact machines are well matched," said Ray Gallant, vice president of product management and productivity for Volvo Construction Equipment, which has five electric models either in production or announced for the North American market.

"From a technological standpoint, electric-powered compact equipment was one of the easiest to go after," said Chris Lucas, product manager for excavators, JCB North America, which debuted its 19C-IE electric compact excavator in 2019.

"Considering compact equipment can be operated with a smaller battery size at lower voltage, we plan to make a shift to battery-type excavators for 10-metric-ton and below," said Thomas Jaejin Lee, director of product management, Doosan Infracore North America.

The Rise of Electric Power

The use of electric power in construction machines is not new. Electric-powered machines have had a long run in the mining, demolition, aerial lift and industrial forklift segments. But now they're making their way onto general jobsites.

Electric construction machines were a trade show curiosity as little as six years ago. Now compact equipment manufacturers expect to be questioned on whether they are working on an electric model.

Much of the electric model work has centered on the compact excavator, with manufacturers using either internal design capabilities or partnering with companies such as Green Machine, Moog Construction and WhisperDrive to create an electric version of a current diesel unit.

An Intriguing Alternative

Most current electric models are electric/hydraulic, in which a lithium-ion battery replaces the diesel engine and powers an electric motor and conventional hydraulics.

But an intriguing alternative is now also on the market: Doosan Bobcat's T7X compact track loader not only replaces the engine with an electric battery and motor, but it also eliminates the hydraulics, instead using an electrical drive system consisting of electric cylinders and drive motors. The company partnered with Green Machine Equipment and Moog Construction in creating the T7X.

Doosan Bobcat started experimenting with electric-powered machines about five years ago, said Joel Honeyman, vice president of global innovation. "We wanted to take some new technologies from other industries and do some unique things with the platform," he said.

"With an all-electric system, it's power on demand, only using the energy you need for the task at hand," said Dave Grabau, key account manager, Moog Construction, a Doosan Bobcat partner on the T7X. "You're not running at wide open throttle or dumping hydraulic fluid over a relief valve and wasting that energy. The powertrain is not limited by emissions tiers, such as 55 kW (74 horsepower).

Now you can get more work done in a 5-to-6-ton machine that has a usable power range of 100 to 150 horsepower," Grabau said.

Currently in production, the first T7Xs are being added to Sunbelt Rentals' fleet.

That brings us to the question of how best to charge electric machines.

800.557.0098 | golight.com

GO LIGHT



DURABLE
VERSATILE



POWERFUL
GUARANTEED

If the goal is zero-emissions, it makes no sense to charge your electric machine with a diesel generator.

“We’re really paying attention to the charging infrastructure,” said Gallant. “How do we get the power out to the jobsites and how do the jobsites have to evolve?”

After developing its electric compact excavator, JCB came out with a universal fast charger, designed to charge the company’s fleet of E-Tech machines. “We always try to make sure we include multiple charging options,” said Rebecca Yates, senior product manager for material handling JCB North America.

To be effective, temporary electric job site power must be deployed rapidly without permitting or site prep requirements, maintains Desmond Wheatley, CEO of Beam Global. His company’s solution is a solar-powered, off-grid charger, the EV ARC 2020, which it showcased in the Volvo CE booth at last year’s Utility Expo.

Electric charging requires a thinking reset, Wheatley said. While fast chargers seem attractive, their use is driven by the experience at the fuel pump. “If a machine has access to a charger during idle times, you can just top it off like you do with your cell phone,” he said. “You just charge it whenever you’re not using it and not wait until it’s empty.”

Aiding this approach will be the advent of wireless job site charging, Wheatley said. With the addition of a ruggedized receiver to the bottom of a machine, instead of being plugged up it could charge while parked over a charging pad. “The wiring is already basically in place, you’ve just got to extend it to the underside of the vehicle,” he said.

Whatever their eventual form, electric charging systems will likely be primarily rental items, Wheatley said.

Three Big Hurdles

While there are contractors who are natural early adopters, most are concerned with practicalities, particularly when it comes to the three big barriers to electric machines: initial cost, run time per charge and charging time.

Primarily because of the present cost of batteries, electric machines typically cost two to three times that of a comparable diesel machine.

JCB, however, did a return-on-investment study that showed a 50% ROI within three to five years, Lucas

said. “There are no maintenance costs with electric machines,” he added. “All you’re doing is charging the machine and filling up the hydraulic fluids.”

Electric machine prices will come down as increasing volume supports driving down component costs, Honeyman said. “On the flip side, the operating cost of the T7X is one-tenth of that of a comparable diesel-hydraulic machine,” he said.

Most OEMs are now citing a range of 4-to-8-hour run time for “average” use on compact equipment and an 8-hour overnight charge.

Customers naturally compare run times on a fully charged electric machine with a full tank on diesel units, but that doesn’t show the whole picture, say our experts.

“An electric machine behaves differently than a diesel machine,” Honeyman explained. “When you let off the joysticks of an electric machine, there’s no idle. An operator can get a day or more of productive work out of it because they’re typically not running the machine eight continuous hours a day.”

Honeyman added: “In comparison, the telematics data on our diesel machines tells us that significant time is spent with the machine simply idling.”

Charging Infrastructure Still Under Development.

That brings us to the question of how best to charge electric machines.

If the goal is zero-emissions, it makes no sense to charge your electric machine with a diesel generator.

“We’re really paying attention to the charging infrastructure,” said Gallant. “How do we get the power out to the jobsites and how do the jobsites have to evolve?”

After developing its electric compact excavator, JCB came out with a universal fast charger, designed to charge the company’s fleet of E-Tech machines. “We always try to make sure we include multiple charging options,” said Rebecca Yates, senior product manager for material handling JCB North America.

To be effective, temporary electric job site power must be deployed rapidly without permitting or site prep requirements, maintains Desmond Wheatley, CEO of Beam Global. His company’s solution is a solar-powered, off-grid charger, the EV ARC 2020, which it show



Always **250+**
Specialized Trucks & Equip.
Delivery Throughout the U.S.A.

Los Angeles, CA

800.896.2480

MONTHLY RENTALS AVAILABLE



HOGG-DAVIS HP-650
Cable Pulling Trailer

Stock # 14176-8

CHEVROLET Diesel
Texoma TX-245B Digger Derrick

Stock #14319-8



FORD Diesel Champion
Cable Scrapper
Hi-Speed Cable Removal

Stock # 14181-8



Sherman Reilly UnderDawg
Bull Wheel Puller

Stock # 14549-8

www.alasher.com

cased in the Volvo CE booth at last year's Utility Expo. The two companies just announced a partnership in which Volvo CE North American dealers can bundle the ARC system with the purchase of its electric equipment.

Electric charging requires a thinking reset, Wheatley said. While fast chargers seem attractive, their use is driven by the experience at the fuel pump. "If a machine has access to a charger during idle times, you can just top it off like you do with your cell phone," he said. "You just charge it whenever you're not using it and not wait until it's empty."

Aiding this approach will be the advent of wireless job site charging, Wheatley said. With the addition of a ruggedized receiver to the bottom of a machine, instead of being plugged up it could charge while parked over a charging pad. "The wiring is already basically in place, you've just got to extend it to the underside of the vehicle," he said.

Whatever their eventual form, electric charging systems will likely be primarily rental items, Wheatley

The Bottom Line

"Widespread adoption of electric equipment starts when it becomes economically viable," Gallant said. "But everyone seems to be willing to see where it develops, and that's encouraging."

Construction can be a "fast follower" to the EV advances made in the automotive sector, Grabau said. In the meantime, Moog uses high efficiency servo motors and electric cylinders to give the best run time and lowest battery cost.

"While we're going to produce diesel equipment for a long time, there are customers and applications that really want this new EV technology," Honeyman said.

About the Association of Equipment Manufacturers (AEM)
AEM is the North America-based international trade group representing off-road equipment manufacturers and suppliers with more than 1,000 companies and more than 200 product lines in the agriculture and construction-related industry sectors worldwide. The equipment manufacturing industry in the United States supports 2.8 million jobs and contributes roughly \$288 billion to the economy every year. •



OIL ALERT[®] **LIQUID LEAK DETECTOR**

DETECT OIL LEAKS AND SPILLS...FAST!

- AVOID OPERATIONS SHUT-DOWN
- REDUCE ENVIRONMENTAL RISKS
- MINIMIZE COSTLY CLEAN-UP
- MONITOR OFF-SITE EQUIPMENT

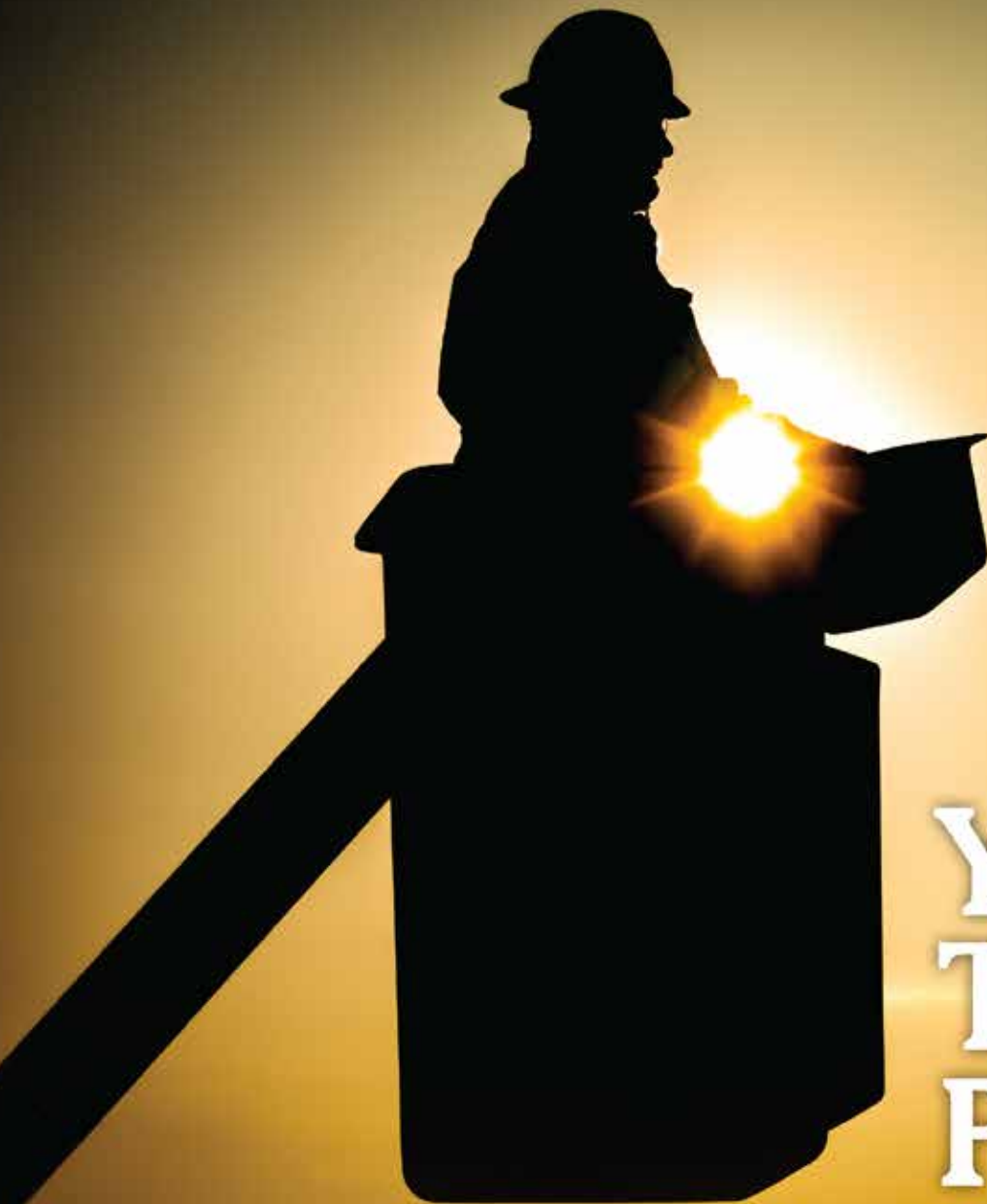
A small amount of oil (1/32 inch) seeping under Oil Alert activates its loud "on/off" alarm and/or relay contact output. The low profile dome shaped unit guards against undetected leakage in areas of oil lubricated / hydraulic equipment, stand-by generators, pressurized piping and fuel oil storage locations...

5 year Limited Warranty

DORLEN Products Inc.
6615 W. Layton Ave. Milwaukee, WI. 53220

Go to WWW.OIL-ALERT.COM
OR CALL: 1-800-533-6392
FOR MORE INFO!!





Your Trusted Partner.

Partnering with Ring Power gives you access to a vast range of jobsite-tough products to round out your fleet. Ring Power carries machines from dozens of manufacturers to ensure you always have access to the right tools for your job.

Short-term, long-term or rental-purchase options available.



1-844-766-RENT • Utility.RingPower.com



John Deere Continues Performance Tiering Rollout with Launch of Large Wheel Loader Line

- John Deere introduces the all-new 744, 824, and 844 P-tier large Wheel Loaders as it extends its Performance Tiering Strategy.
- First showcased earlier this year at World of Asphalt and AGG1, the new John Deere 904 P-tier Wheel Loader is now available in the U.S. and Canada.
- The P-tier models include visibility enhancements and technology features such as an Advanced Vision System and an Advanced Obstacle Detection System.

John Deere launches its line-up of large wheel loaders as part of its Performance Tiering Strategy. Now available in the U.S. and Canada, the 744 P-tier, 824 P-tier, 844 P-tier, and the new 904 P-tier Wheel Loaders offer advanced productivity features, increased job-site reliability, optimal operator comfort, and enhanced serviceability to help improve machine uptime. Expanding on the industry-proven line-up of John Deere wheel loader offerings, the P-tier models are ideal machine solutions for customers looking to tackle even the toughest jobs with ease.

“Whether the machines are working at the face or loading trucks, John Deere customers can be confident that the P-tier machines will provide exceptional performance all day – even in the most rugged applications,” said Luke Gribble, solutions marketing manager, John Deere. “Building upon the improvements introduced on the L-series loaders in 2019, the P-tier models incorporate even more technology advancements,



SAFELY Lifts Up To 500 lbs!

- Ergonomic
- Portable
- Lightweight
- Meets OSHA & ASME Requirements

Customized Safety Lifting Devices For Any Application

Available in both
CHAIN & CABLE
Configurations



The Sky Hook is your personal safety lifting solution, preventing lifting injuries while saving you both time and money!

800-4-SKYHOOK

800-475-9466 • 208-365-5770

www.skyhookmfr.com

SKY HOOK

ATTCO, Inc. OSA
by SYCLONE ATTCO SERVICE



providing our customers with a line of dependable and strong wheel loaders to meet the demands of the aggregates industry.”

The 744 P-tier, 824 P-tier, and 844 P-tier Wheel Loaders offer exceptional results at high levels with reliable components such as extra-durable axles and high-performing transmission capabilities, helping to boost overall machine efficiency on the job. To improve machine performance while heading into piles, all P-tier loaders include a standard lockup torque converter that adds additional torque during operation and increases shift quality. In addition, the 744 P-tier and 824 P-tier models feature ground-level servicing, including a remote engine oil dipstick and improved electrical and hydraulic routing, to improve serviceability and get your machine back on the job sooner, increasing uptime.

Combining the productivity-increasing features with a redesigned cab and controls, the 744 P-tier, 824 P-tier, and 844 P-tier Loaders provide the muscle

needed for operators to work comfortably and efficiently. The redesigned cab gives the operator more space, storage, and enhanced visibility during operation. Additional features that improve operator comfort and performance include adjustable heated and ventilated seats and an upgraded HVAC system.

Included in the base models of all P-tier Wheel Loaders are a variety of features aimed to increase performance on the job. High-capacity, heavy-duty axles with standard axle cooling filtration deliver durability in difficult conditions compared to previous models. With advantages, such as fuel-efficient engines, operators of the P-tier machines can do more while burning less fuel. The electrohydraulic (EH) controls with multifunction programmable buttons offer the highest level of operator comfort, while the material-handling buckets with integrated spill guards and curved side cutters make for easier and more intuitive operation.

All P-tier Wheel Loader models also include tech

Relax On Payroll Fridays

- 5 Minute Friday Payroll
- Internet Based • Encrypted
- Avoid Jail Time and Costly Fines
- Identifies All Davis Bacon Compliance Errors
- 80% Savings of Time and Money Compared to Manual Payroll Preparation



e - Mars, Inc.
"Compliance at your Fingertips"
58,000+ Construction Clients

eMarsinc.com
Ph: 480-595-0466

nology options such as an Advanced Vision System and an Advanced Obstacle Detection System for improved visibility and increased situational awareness. The new higher resolution digital cameras, dedicated display, and escalating audible alerts inform operators when obstacles are in the path of their machine. This feature also overlays a projected vehicle reversible path within the same dedicated monitor, enhancing the operator's experience and control.

JLink™ connectivity is offered as a standard feature on the P-tier Wheel Loader models, enabling machine communications and remote support from dealers. These features, coupled with premium cab comfort options and included visibility enhancements, ensure operators remain productive throughout the day.

To learn more about the P-tier Wheel Loader models, contact your local John Deere dealer or visit www.deere.com.

About John Deere

Deere & Company (www.JohnDeere.com) is a global leader in the delivery of agricultural, construction, and forestry equipment. We help our customers push the boundaries of what's possible in ways that are more productive and sustainable to help life leap forward. Our technology-enabled products including John Deere Autonomous 8R Tractor, See & Spray™, and E-Power Backhoe are just some of the ways we help meet the world's increasing need for food, shelter, and infrastructure. Deere & Company also provides financial services through John Deere Financial.

www.deere.com •

CROSS COUNTRY
INFRASTRUCTURE SERVICES INC.

Your Source for Construction Equipment Rentals and Supplies

SUPPLIES INCLUDE: Abrasive & Cutting Tools > Environmental > Safety Products > Valves, Fasteners & Fittings > Lifting & Rigging > Piggng Products > Pipe Testing Equipment > and Much More

EQUIPMENT RENTALS INCLUDE:



Pumps



Padding Machines



Pipelayers



Flat Bed Tractors



Excavators

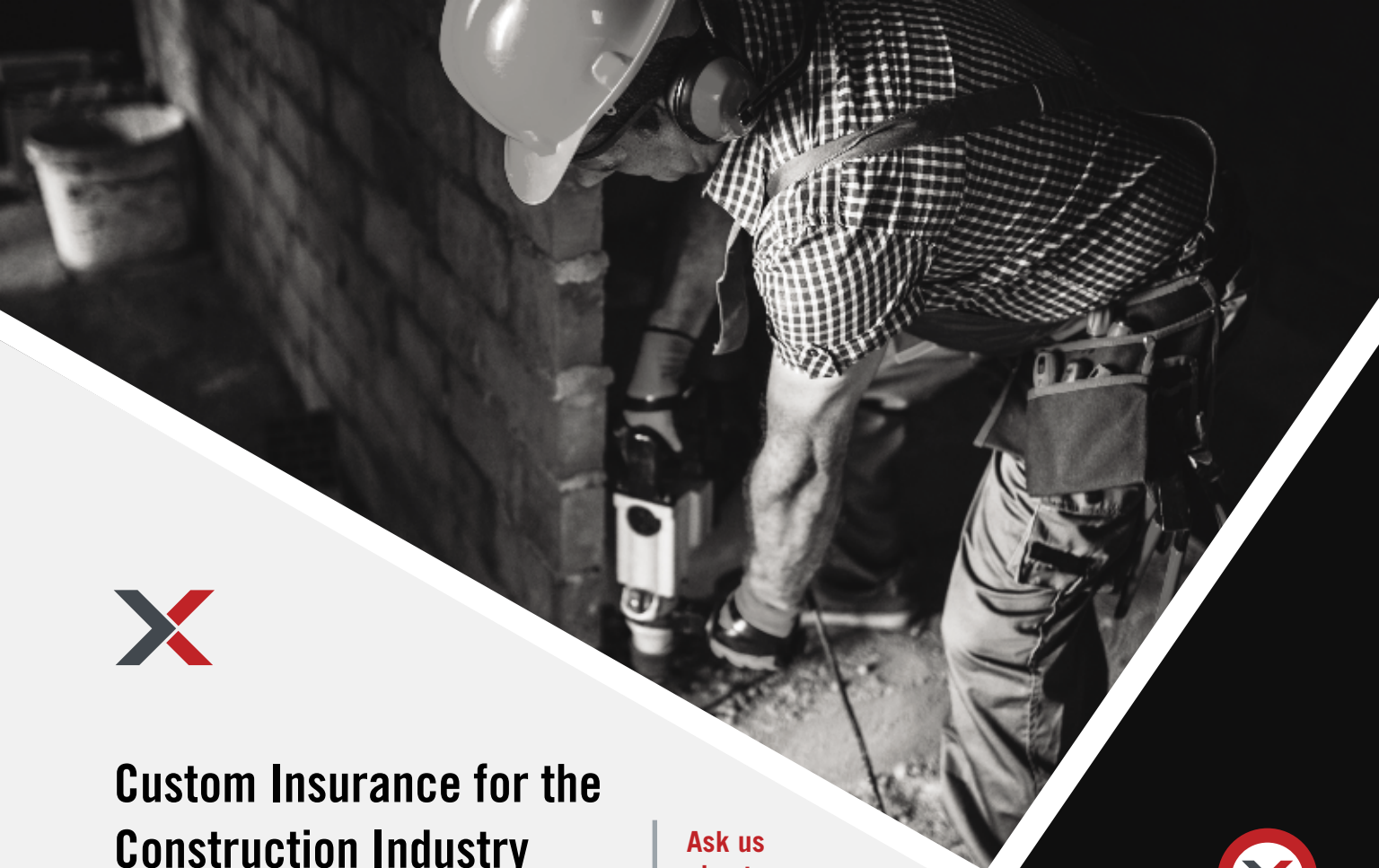


Trenchers



Dozers

For Rentals And Supplies Visit **CrossCountryIS.com** Or Call **1-855-955-CCIS (2247)**



Custom Insurance for the Construction Industry

With XINSURANCE, You Get...

- All-In-One Approach
- Agent Friendly
- Limits up to \$10MM
- Property & Casualty
- Professional Liability
- Commercial Auto Liability
(available in most states)
- Products Liability
- Exclusions/Gaps in Current Coverage & More

XINSURANCE is powered by Evolution Insurance Brokers, LC ("EIB"), an excess and surplus lines insurance brokerage. XINSURANCE is a DBA of EIB, which is domiciled in and has its principal place of business in Sandy, Utah. This insurance product is offered by an unlicensed surplus lines insurer. The NPN for EIB is 5464658 and CA license number is OH93938.

Ask us
about our new
coverage option –
Communicable
Disease
Liability



To get your free custom insurance quote for the construction industry, visit www.xinsurance.com

You can also contact Logan Fitzgerald directly at **801.304.5562** or loganf@xinsurance.com

XINSURANCE



Hydraulic Detachable Gooseneck

For more than two decades, our Hydraulic Detachable Gooseneck Trailer has been North America's bestselling detachable lowboy for construction professionals—and for good reason.

It's engineered to make unhooking, loading and unloading, and hooking up again a simple one-person operation.



trailking.com

Serving our customers since 1974.

@trailkingind

DIAGNOSE YOUR OWN EQUIPMENT.



*Big updates on
CASE, New Holland, JCB
& John Deere*



The **OHV Pro** is our answer to folks needing a stand alone, full featured scan tool for working on Agricultural, Construction, Mining and other Off-highway applications. Brands such as John Deere, Volvo, Caterpillar and CASE are covered. Perform bi-directional controls on hydraulics and special functions, such as injector coding, DPF regens and VGT calibrations.

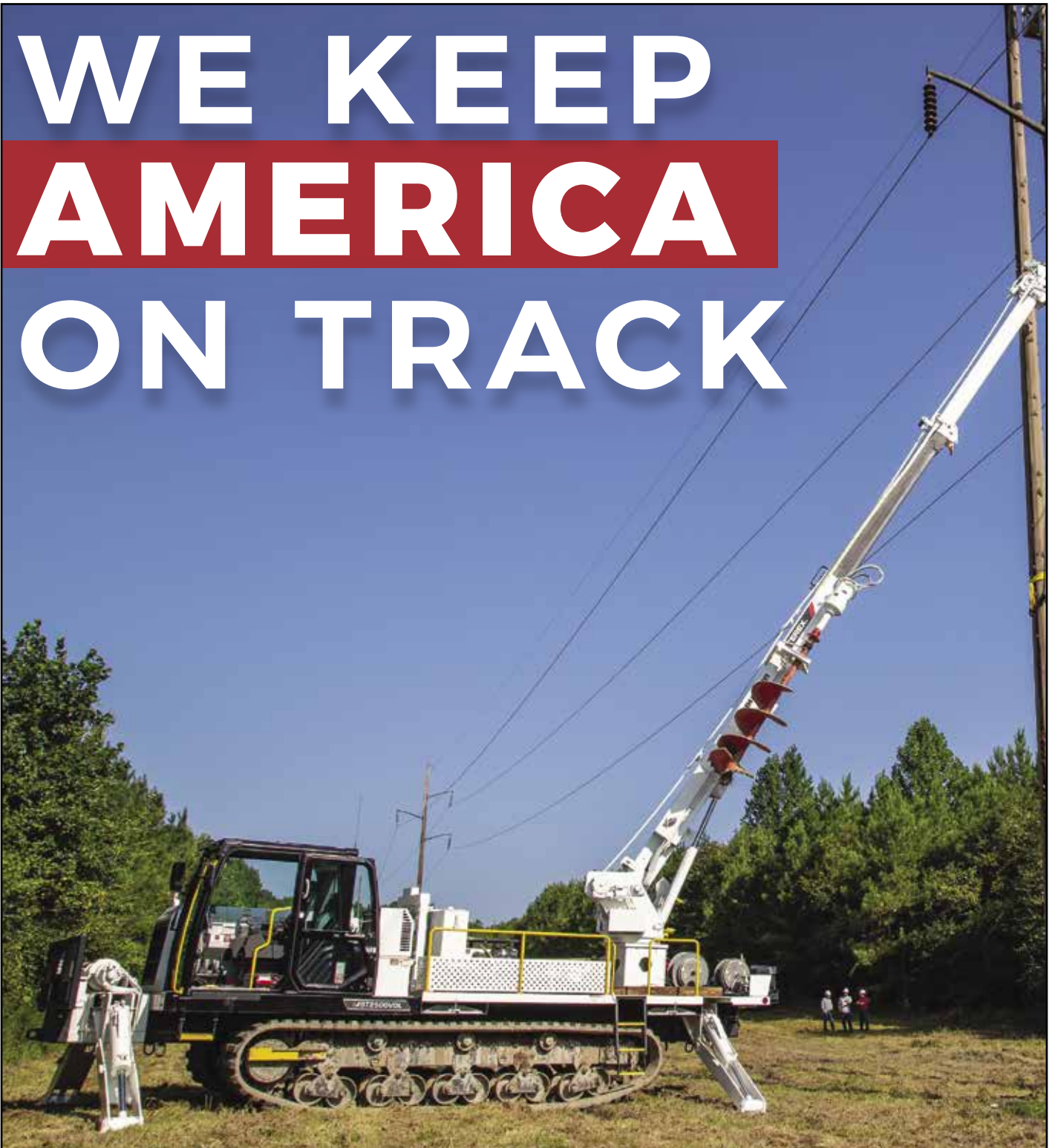
8" Android Tablet | IP65 Rated | Bluetooth® Wireless | Easy Updates | Remote Technician

WWW.CANDOINTL.COM

CanDo
INTERNATIONAL, INC.

909/CANDO-11(226-3611)

WE KEEP AMERICA ON TRACK



MOROOKA

UTILITY CARRIERS

Call: 800-365-7260

OR

Visit: morookacarriers.com



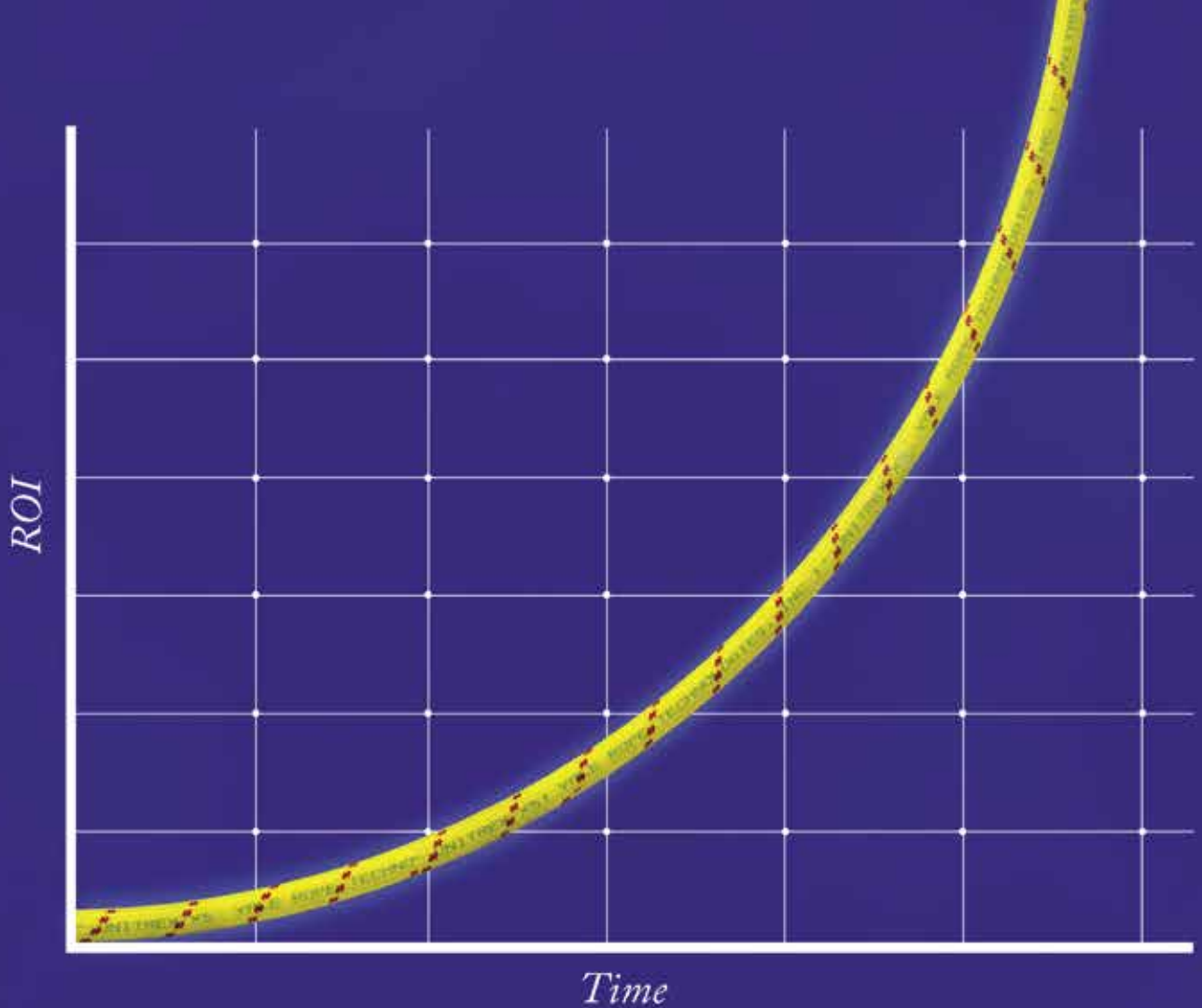
CM Labs brings Trimble GPS capabilities to Excavator, Dozer, and Motor Grader Simulation Training Packs

CM Labs Simulations, developer of Vortex® training simulators, today expanded its integration with the Trimble® Earthworks Grade Control Platform on two additional simulators; the Dozer and Motor Grader Simulator. This ongoing collaboration between industry leaders provides best-in-class training for Trimble's innovative grade control solution that has gained widespread adoption.

"Our simulators allow operators to learn new technologies and workflows safely, with a higher level of competency, before using real equipment," says Lisa Barbieri, VP of Product at CM Labs. "We offer "future-proofed" training to prepare workers as the work site modernizes. Simulation provides training organizations access to these technologies, such as Trimble Earthworks, while ensuring their curriculum meets the needs of a changing market."

Trimble Earthworks software works in parallel with CM Labs' patented software and runs on a tablet that connects to the simulator. Using the simulator, visual aids are overlaid onto the existing ground along with cut/fill information, slope data, and other customizable reference points to provide the user with a better understanding of the work that needs to be done.

Trimble Earthworks, combined with CM Labs' unmatched machine realism, builds skills that transfer directly to the worksite, to train operators of all experience levels on how to work more efficiently, and lay the foundation for seamless technology transition and adoption. There is no simpler way to prepare operators for the tools that are part of today's highly technical jobsites.



Unitrex XS™ Max Wear. Unmatched performance in the field and in the boardroom.

Electric line stringing is easier and more economical with Unitrex™. Made with a core of Honeywell Spectra®, it is up to 10 times lighter than steel, while delivering comparable strength. The urethane-coated polyester jacket provides excellent abrasion resistance for great productivity that lasts.

To learn more, visit www.yalecordage.com

YALE CORDAGE
Performance. Passion. Possibilities.

77 Industrial Park Road | Saco, Maine 04072 | p (207) 282-3396, f (207) 282-4620



“We see great value in the curriculum CM Labs offers for Trimble’s Earthworks machine control”, said Cameron Clark, Earthmoving Industry Director at Trimble. “With the ongoing labor shortages, simulation training provides a unique opportunity to train contractors cost-effectively.”

Trimble Earthworks is now available as an add-on with CM Labs’ Excavator, Dozer, and Motor Grader Simulation Training Packs. The software

is compatible with all of CM Labs’ Vortex Simulators, including the desktop Vortex Edge Plus, the motion-enabled Vortex Edge Max, and the high-immersion Vortex Advantage.

About CM Labs Simulations Inc. CM Labs’ mission is to simulate the world to make operations safe and efficient, by connecting people, processes, and equipment design.

The company builds simulation-based solutions to help clients design advanced equipment and prepare for skilled operations. Through its Vortex Studio platform, CM Labs provides training simulators, mission rehearsal, virtual prototyping, and testing capabilities. CM Labs’ vision is to be the leader in digital transformation, from machine design to training.

Clients include OETIO, IUOE, Kiewit, Liebherr, Mammoet, Manitowoc, NASA, and over 100 other world-class companies, OEMs, equipment operators, and trades training organizations.

Vortex® is a registered trademark of CM Labs Simulations.

For more information, contact info@cm-labs.com, or visit www.cm-labs.com



Line Guard | Pole Guard | BirdBloc
Learn More at CritterGuard.org



The New Standard for Linemen

At Tallman Equipment, our priority is to set the standard in the electric transmission and distribution industry with an all-inclusive approach to serving our customers. Our vision to deliver a trio of quality, convenience, and reliability is driven by listening and adapting to the needs of our customers. As the industry changes, so does Tallman. As a result, Tallman Equipment has become a unique company within our industry offering a full range of professional services including tool sales, product distribution, rentals, and repair. Tallman is already a trusted name in stringing blocks, cable assemblies, fiberglass, and rope products – and we are excited to announce the addition of our new Rubber Goods Testing Lab.

Our Services Include:

Groundset & Jumperset Manufacturing, Repair & Refurbishing

Transformer Sling Manufacturing & Rope Repair

Battery Power Tool & Equipment Repair

Fiberglass Tool Testing, Repair & Refinishing

Tool & Equipment Rental

Rubber Goods Testing & Refurbishment



Trust **TALLMAN**

www.tallmanequipment.com

Call Toll Free: 877-860-5666

International: 630-860-5666

Monthly Buyer's Guide

- **Buccaneer Rope**
22319 Alabama Hwy.79
Scottsboro, AL 35768
800-358-7673
www.bucrope.com
- **Cleanfix Reversible Fans**
250 Wright Blvd.
Stratford, ON, CN N4Z1H3
866-489-3267
www.cleanfix.org
- **Conduit Repair**
761 Enterprise Dr. # 1
St. George, UT 84790
800-670-1804
www.conduitrepair.com
- **Greaves USA**
30 Industrial PK.
Centerbrook, CT. 06409
800-243-1130
www.greaves-usa.com
- **Hogg Davis**
3800 Eagle Loop
Odell, OR. 97031
855-883-4909
www.hoggdavis.com
- **Jeffrey Machine, Inc.**
3841 Industrial Dr
Birmingham, AL 35217
205-841-8600
www.jeffreymachine.com
- **Manitex USA**
3000 S. Austin Av.
Georgetown, TX. 78626
877-314-3390
www.manitex.com
- **M.B. Crushers**
8730 Technology Way
Reno, NV. 89521
855-MBCRUSH
www.mbcrusher.com
- **Morooka USA**
11191 Air Park Rd.
Ashland, VA. 23005
www.morooka.com
- **Morbark**
8507 S. Winn RD.
Winn, MI. 48896
800-831-0042
www.morbark.com
- **Ring Power**
9901 Ringhaven DR.
Orlando, FL. 32824
407-855-6195
www.ringpower.com
- **Rome Plows**
475 N.6th. St.
Cedartown, GA. 30125
770-748-4450
www.romeplow.com
- **Terex Utilities**
1901 -14th AV. N.W.
Watertown, SD. 57201
800-233-2972
www.terex.com
- **U.T.V. INTERNATIONAL**
8850 Danley Rd.
Quebec, CN. H4T1M4
514-345-0990
www.utvint.com
- **Yale Cordage**
77 Industrial Park Rd.
Saco, ME. 04072
207-282-3396
www.yalecordage.com

CLEANFIX.ORG

Reversible Fans For Radiator Cleaning



CLEAN RADIATORS

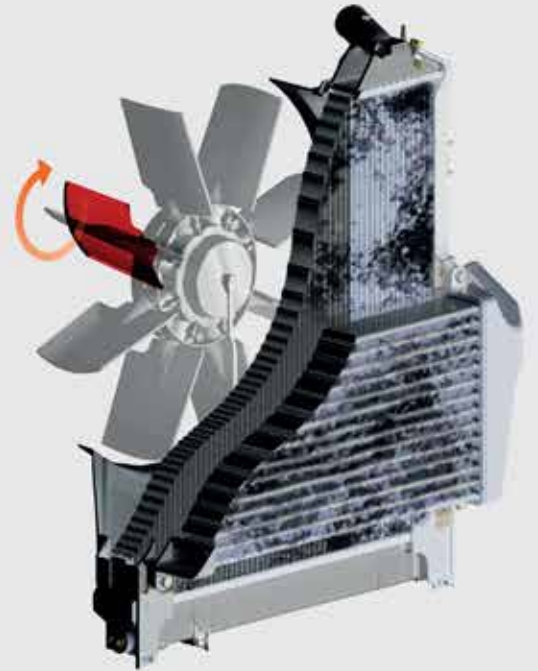
= Increases Power 

= Increases Operator Comfort 

= Reduces Downtime 

= Saves Fuel 

More than you think!



web cleanfix.org

youtube



cleanfixgf

facebook



CleanfixReversibleFans

Ad Index

Company	Pg.	Website
Asher & Sons	7	www.alasher.com
Atlantic Screen & Mfg Inc	2	www.atlantic-screen.com
Can Do	16	www.candointl.com
Cleanfix	23	www.cleanfix.org
Critter Guard	20	www.critterguard.org
Cross Country	14	www.crosscountryis.com
Dorlen	8	www.oil-alert.com
eMars Inc	13, 24	www.emarsinc.com
Essex Steel	BC	www.essexsteel.com
Go Light	5	www.golight.com
Hogg Davis	3	www.hoggdavis.com
iToolco	IFC	www.itoolco.com
Manitex	IBC	www.manitex.com
Morooka	17	www.morooka.com
Ring Power	9	www.ringpower.com
Rome Plow	1	www.romeplow.com
Sky Hook	11	www.skyhookmfr.com
Tallman	21	www.tallmanequipment.com
Trail King	16	www.trailking.com
X Insurance	15	www.xinsurance.com
Yale Cordage	19	www.yalecordage.com

**Relax On
Payroll Fridays**

eMarsinc.com
Ph: 480-595-0466

e- Mars, Inc.
"Compliance at your Fingertips"

- 5 Minute Friday Payroll
- Internet based
- 58,000+ Construction Clients
- Avoid Jail Time and Costly Fines
- Encrypted
- Identifies All Davis Bacon Compliance Errors
- 80% Savings of Time and Money Compared to Manual Payroll Preparation

Manitex

VISIT US AT: WWW.MANITEX.COM
STRENGTH. DEPENDABILITY. MANITEX.

THE RIGHT TOOL FOR THE JOB

THE M150 IS IDEAL FOR PLANT, OIL REFINERY OR WAREHOUSE APPLICATIONS. SITTING AT JUST OVER 11 FT. TALL THE M150 CAB-DOWN IS IDEAL WHEN SPACE IS LIMITED. WITH ITS COMPACT SIZE THIS LOW-PROFILE CRANE IS DESIGNED FOR HIGH PERFORMANCE WHILE REMAINING VERSATILE TO AN ARRAY OF WORK ENVIRONMENTS.

M150 - 15 TON

- ✓ Optimal operator comfort
- ✓ Fully adjustable controls
- ✓ Best in class load chart

Stand out safety features!
(Override key switch, rear view camera, ext. LMI utilization light)





STRUCTURAL STEEL CO., INC.

Pre-Engineered Buildings Built to Withstand The Rugged Northeast Winters

- Commercial, Industrial and Agricultural Buildings Built to Satisfy Your Building Needs
 - Pre-Engineered Steel Packages
 - Pre-Engineered Post Frame Packages
 - Mini Storage Buildings



*Call For a Quote On
Your Next Project*

***We Manufacture 26 & 29 ga.
Steel Roofing & Siding***



STRUCTURAL STEEL CO., INC.



607 Rt. 13 S, Cortland, NY 13045

National: 1-800-323-7739



(607) 753-9384 • Fax: (607) 753-6272 • www.essexsteel.com