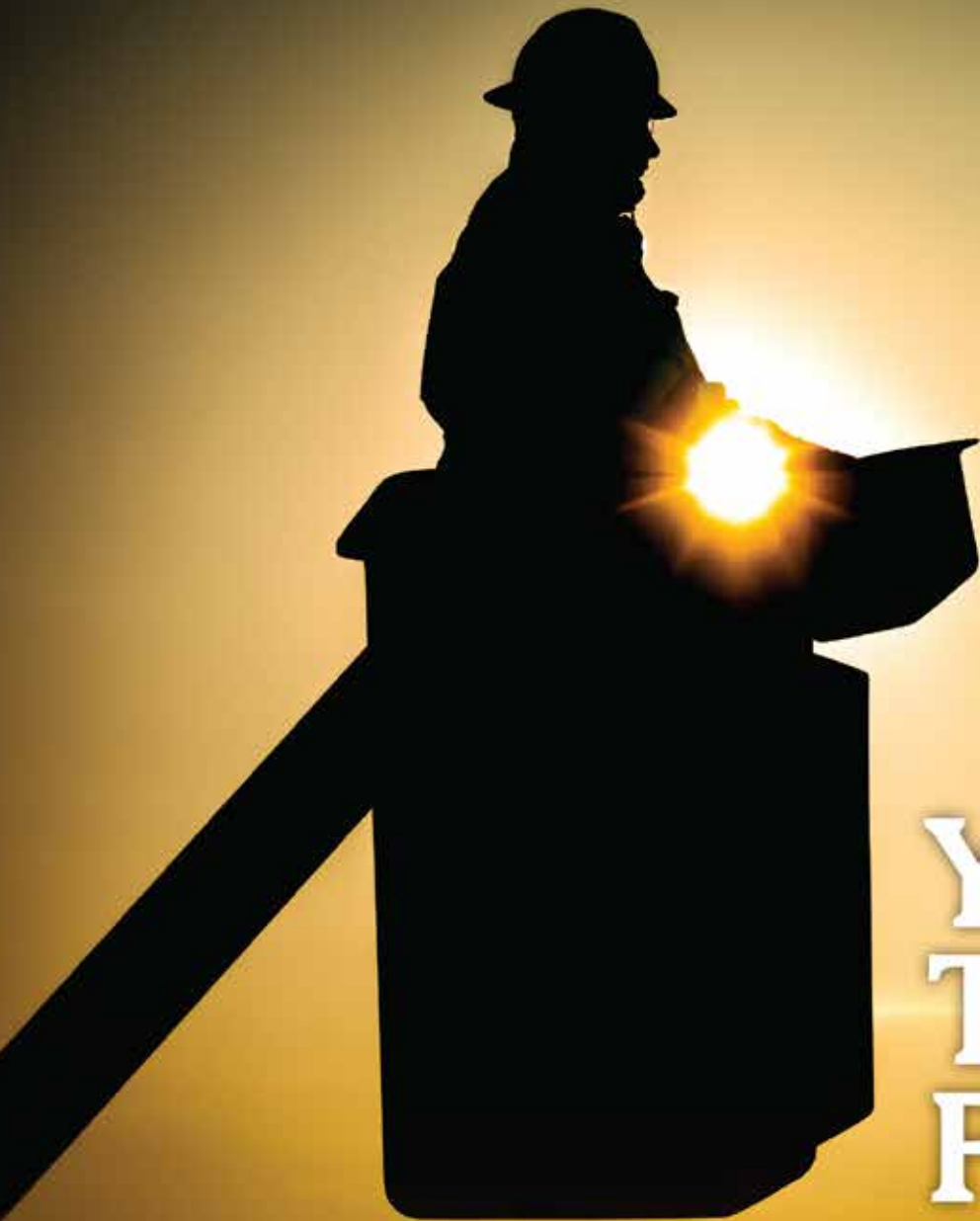


January 2021

# NEW CONSTRUCTION Products

John Deere Adds Industry-Exclusive  
Technology to GP-Series Motor Graders





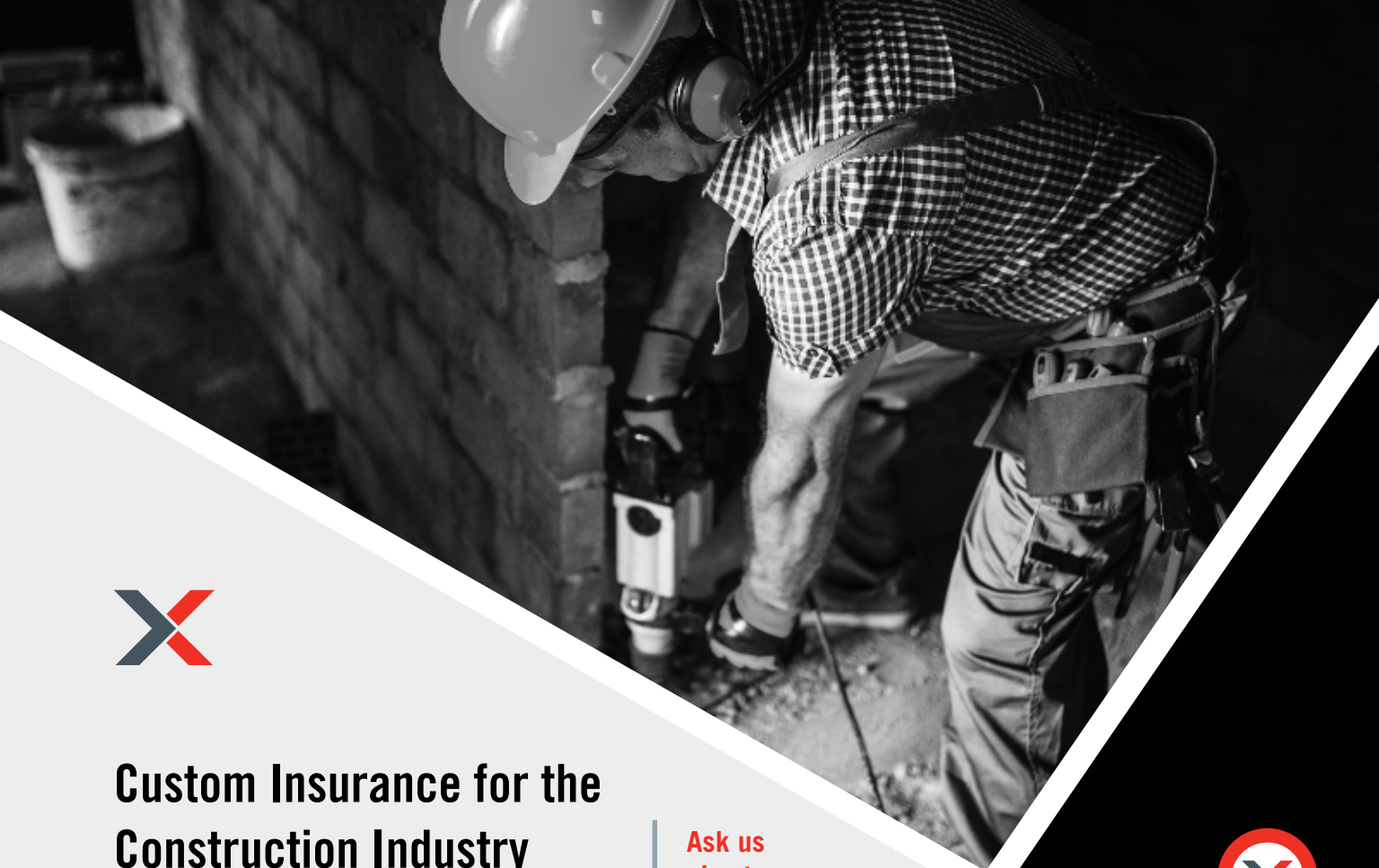
# Your Trusted Partner.

Partnering with Ring Power gives you access to a vast range of jobsite-tough products to round out your fleet. Ring Power carries machines from dozens of manufacturers to ensure you always have access to the right tools for your job.

Short-term, long-term or rental-purchase options available.



1-844-766-RENT • [Utility.RingPower.com](http://Utility.RingPower.com)



## Custom Insurance for the Construction Industry

### With XINSURANCE, You Get...

- All-In-One Approach
- Agent Friendly
- Limits up to \$10MM
- Property & Casualty
- Professional Liability
- Commercial Auto Liability (available in most states)
- Products Liability
- Exclusions/Gaps in Current Coverage & More

XINSURANCE is powered by Evolution Insurance Brokers, LC ("EIB"), an excess and surplus lines insurance brokerage. XINSURANCE is a DBA of EIB, which is domiciled in and has its principal place of business in Sandy, Utah. This insurance product is offered by an unlicensed surplus lines insurer. The NPN for EIB is 5464658 and CA license number is OH93938.

Ask us about our new coverage option – Communicable Disease Liability



To get your free custom insurance quote for the construction industry, visit [www.xinsurance.com](http://www.xinsurance.com)

You can also contact Logan Fitzgerald directly at **801.304.5562** or [loganf@xinsurance.com](mailto:loganf@xinsurance.com)

# XINSURANCE

|       |   |
|-------|---|
| PG 4  | The Concrete Safety Solution  |
| PG 8  | John Deere Adds Industry-Exclusive Technology to GP-Series Motor Graders                    |
| PG 12 | John Deere Delivers Power, Performance With Purpose-Built 700L PL40 Pipelayer-Ready Crawler |
| PG 18 | Monthly Buyer's Guide   |
| PG 20 | Ad Index  |



Pg 8

**PRESIDENT**

Glen Hobson  
205-441-5591  
glen@handfmedia.net

**DIRECTOR OF BUSINESS**

Butch Cole  
205-624-2180  
butch@handfmedia.net

**ADMINISTRATIVE DIRECTOR**

Steven Hobson  
steven@handfmedia.net

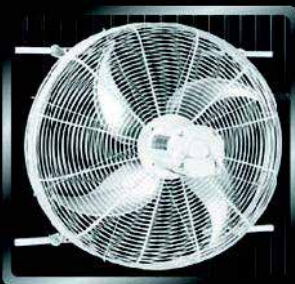
**EDITOR**

Brandon Greenhill  
brandon@handfmedia.net

**CREATIVE/ WEB DIRECTOR**

Jacklyn Greenhill  
jacklyn@handfmedia.net

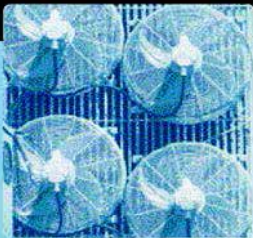
# Get Cool!



Extend transformer life!

Increase transformer capacity up to 166%!

- expert technical assistance
- large inventory
- low sound levels
- one-piece cast aluminum blades
- energy-efficient motors
- galvanized or stainless steel guards



quality engineered, performance tested

p.o. box 187 germantown, wisconsin 53022

262.255.2318

www.krenzvent.com

P.O. Box 1568 • Pelham, AL 35124  
Phone: 205-441-5591 • Fax: 205-624-2181  
www.newconstructionproducts.com  
info@newconstructionproducts.com



*New Construction Products™* is published twelve times a year on a monthly basis by H & F Media, Inc. *New Construction Products™* is distributed free to qualified subscribers. Non-qualified subscription rates are \$57.00 per year in the U.S. and Canada and \$84.00 per year for foreign subscribers (surface mail). U.S. Postage paid at Birmingham, Alabama and additional mailing offices.

*New Construction Products™* is distributed to qualified owners and managers in the construction industry. Publisher is not liable for all content (including editorial and illustrations provided by advertisers) of advertisements published and does not accept responsibility for any claims made against the publisher. It is the advertiser's or agency's responsibility to obtain appropriate releases on any item or individuals pictured in an advertisement. Reproduction of this magazine in whole or in part is prohibited without prior written permission from the publisher.

POSTMASTER: Send address changes to  
H & F Media, Inc. P.O. Box 1568  
Pelham, AL 35124  
PRINTED IN THE USA

# CLEANFIX.ORG

Reversible Fans For Radiator Cleaning



## CLEAN RADIATORS

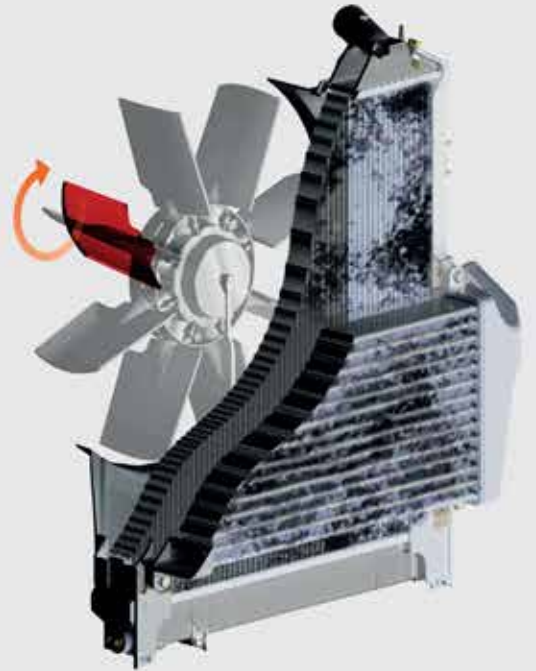
= Increases Power 

= Increases Operator Comfort 

= Reduces Downtime 

= Saves Fuel 

*More than you think!*



web [cleanfix.org](http://cleanfix.org)

youtube



cleanfixgf

facebook



CleanfixReversibleFans

# The Concrete Safety Solution

Often overlooked as a dangerous job, concrete truck drivers risk their lives at every assignment. With blind spots, difficult drop-off sites, and multiple personnel in the surrounding area; there is a multitude of obstacles and worryment to overcome.

However, truckers should rest assured that there is technology out there that is specifically designed to assist with these hurdles. Safety Vision, LLC is dedicated to creating mobile surveillance systems that mitigate hindrances in the industry; and with their complete concrete mixer solution, the support needed is embedded in the truck.

## **Observer 4401™ HVR**

<http://www.safetyvision.com/products/observer-4401-hvr>

Serving as the foundation of the solution, the Observer 4401 Hybrid Video Recorder (HVR) collects and retains all the vehicle's information, including the metadata and video footage. Equipped with two SD card slots, it can hold up to 512 GB of video, which is a substantial amount and vital to enforcing the most effective and safe operations.



By reviewing the array of recorded video, businesses can learn which practices need improvement, as well as which ones are favorable. These insights can then be shared with the truckers in order to improve their overall operational awareness. Moreover, businesses are empowered to turn these recordings into first-hand training videos for all established and new employees. This ensures that all personnel are knowledgeable and up to date about how to best follow their practices.

## **SV-EXTCAM HD**

<http://www.safetyvision.com/products/sv-extcam-hd>

By placing multiple cameras on the truck's exterior, the entire surrounding area is captured; making it easier for drivers to focus on the given task at hand. When the cameras act as the second pair of eyes for the vehicle, the trucker can devote their attention to their route and/or dropping off the concrete.



Additionally, exterior cameras provide protection against false claims. When the incident is captured on video, the "he said/she said" aspect is diminished, since all evidence is observed by the cameras.

## **CP4™ Monitor**

<http://www.safetyvision.com/products/cp4>

The CP4 monitor completes the solution, which allows the driver to see through the camera's lens in real-time. With multiple split screen views, the monitor is able to play 9 cameras at once: whether they be

# Rugged Dependability

STANDARD IN EVERY MACHINE WE BUILD!

Hogg & Davis has been proudly manufacturing utility line equipment for more than half a century.



Our trusted products are part of the fleets and tool cribs of nearly every investor-owned power and communications company in the United States and Beyond.



HOGG & DAVIS, Inc.

HOGG & DAVIS, INC.

3800 EAGLE LOOP • ODELL, OR 97044

TEL 541.354.1001 • FAX 541.354.1080

WWW.HOGGDAVIS.COM

placed internally or externally. This product truly allows the driver to focus on the task by managing distractions: they no longer have to attempt to maintain complete visibility on the road, their surroundings, and the drop-off; they have a second pair of eyes right there with them.

Utilizing the monitor not only enhances visibility for the surrounding area, but also establishes a better view of the drop-off area. Drivers can rest assured that they are completing it in an optimal and efficient manner because their drop-off is on the screen in front of them. Safety is guaranteed.



While concrete truckers face many difficulties while on the road or at drop-off sites, Safety Vision's complete concrete surveillance solution offers that helping hand needed to ensure safety on the job. By using the system, truckers gain confidence in every facet of their job by depending on their surveillance system for security.

*Written by Alicia Delgado, the Marketing Manager for Safety Vision, LLC.*

To learn more, please go to <http://www.safetyvision.com> •



## **OIL ALERT<sup>®</sup>** **LIQUID LEAK DETECTOR**

**DETECT OIL LEAKS AND SPILLS...FAST!**

- AVOID OPERATIONS SHUT-DOWN
- REDUCE ENVIRONMENTAL RISKS
- MINIMIZE COSTLY CLEAN-UP
- MONITOR OFF-SITE EQUIPMENT

A small amount of oil (1/32 inch) seeping under Oil Alert activates its loud "on/off" alarm and/or relay contact output. The low profile dome shaped unit guards against undetected leakage in areas of oil lubricated / hydraulic equipment, stand-by generators, pressurized piping and fuel oil storage locations...

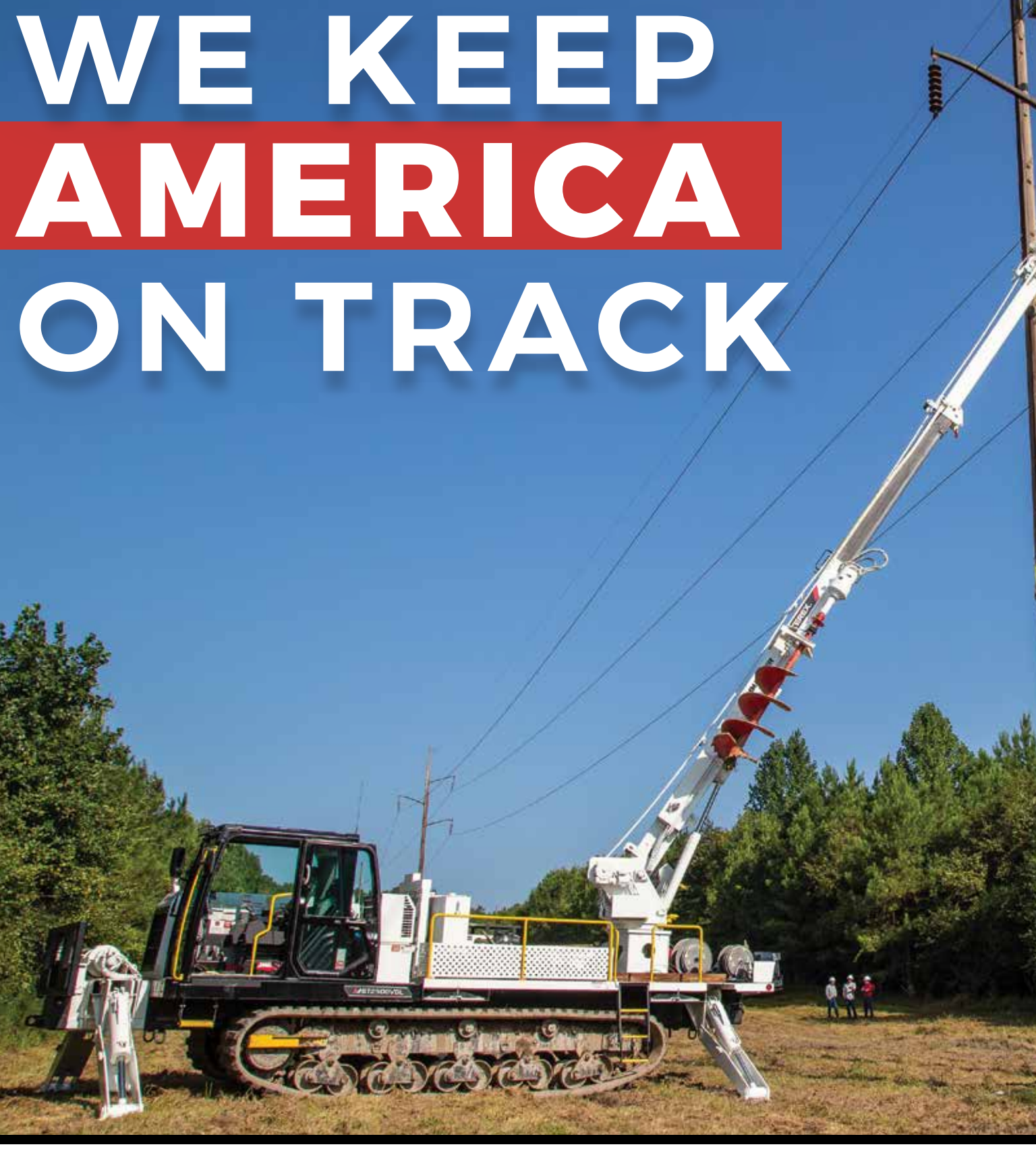
**5 year Limited Warranty**

**DORLEN Products Inc.**  
6615 W. Layton Ave. Milwaukee, WI. 53220

**Go to [WWW.OIL-ALERT.COM](http://WWW.OIL-ALERT.COM)**  
**OR CALL: 1-800-533-6392**  
**FOR MORE INFO!!**



# WE KEEP AMERICA ON TRACK



**MOROOKA**

UTILITY CARRIERS

Call: 800-365-7260

OR

Visit: [morookacarriers.com](http://morookacarriers.com)

# John Deere Adds Industry-Exclusive Technology to GP-Series Motor Graders

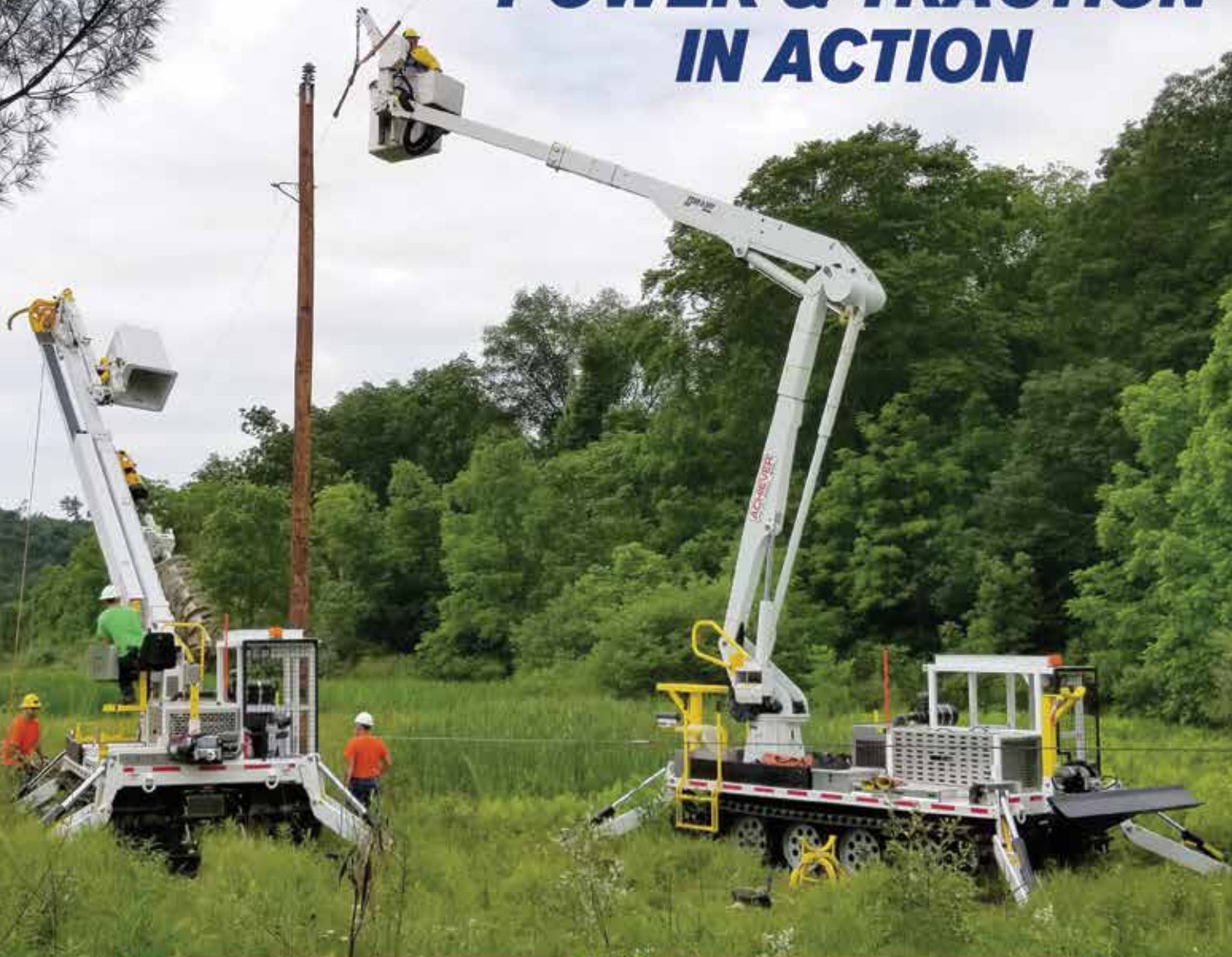


- John Deere enhances the technology capabilities of its GP-Series motor graders with new automation features — Machine Damage Avoidance, and industry exclusives, Blade Stow and Auto-Gain for Cross Slope.
- SmartGrade™ motor grader technology further boosts operator productivity.
- John Deere will now include the factory-installed Premium Circle on all new SmartGrade motor graders, further increasing machine productivity and uptime.

John Deere expands the capabilities of its popular Grade Pro (GP)-Series of motor graders with new technology, including two industry-exclusive features, Blade Stow and Auto-Gain for Cross Slope. The new features, which also include Machine Damage Avoidance, deliver higher productivity, increased uptime and lower daily operating costs during operation.

“Our customers challenge us to find new ways to incorporate smart technologies into Deere products. They are looking for solutions to help make equipment easier to run and more efficient,” said Luke Kurth, product marketing manager, motor graders. “These new features allow new operators

# POWER & TRACTION IN ACTION



**ACHIEVER**  
RT-02 DD DIGGER DERRICK

**ACHIEVER**  
DPM-52 TRACKED AERIAL

## TRACKED DIGGER DERRICKS & AERIALS

- 57' working height (aerial)
- Exclusive hydraulic fold-out/removable bucket (digger derrick)
- Can be towed on a 10 ton trailer behind a line truck
- Sets up to 65' poles / 24" diameter
- 2.25 psi ground pressure (loaded), 17,500 lbs, 134 hp
- Super stable 45° hydraulic radial outriggers
- The shortest production lead times in the industry



For more information or to schedule a demonstration contact UTV International today.

[2sales@utvint.com](mailto:2sales@utvint.com)

1-800-985-8665

[www.utvint.com](http://www.utvint.com)

to come up to speed more quickly, and all operators can take full advantage of the productivity of Deere graders. We are committed to delivering a differentiated customer experience by bringing innovation to the always-evolving construction industry.”

The technology updates include two industry-exclusive offerings, Blade Stow and Auto-Gain, providing greater simplification for the operator. Blade Stow, standard with machine presets or Automation Suite, adds a configurable setting to automatically stow the blade with the touch of a button. With Auto-Gain, the machine automatically adjusts the Cross Slope gain setting on the fly based on the operating conditions, eliminating the need for operators to make manual adjustments. Auto-Gain improves productivity for operators by ensuring accurate blade movement in ever-changing conditions.

The GP-Series motor graders can be further enhanced with optional Machine Damage Avoidance. When activated, the feature reduces the chance of downtime by preventing the moldboard from inadvertently contacting the tires, the cab steps or frame and the saddle from contacting the table. With this feature, operators can focus on the job at hand, improving productivity.

SmartGrade™ motor grader models received additional enhancements to the industry's first mastless motor grader for greater flexibility and productivity, including a larger file-processing capability, up to 20% faster file transfers and increased real-time kinematic (RTK) radio stability. SmartGrade machines are now compatible with network RTK and local positioning system (LPS) technology.

In addition, John Deere now includes the factory-installed Premium Circle on all new SmartGrade motor graders. The fully sealed bearing and pinion help reduce maintenance costs and downtime by eliminating wear inserts and ensuring the circle remains tight during operation, maximizing accuracy while also significantly boosting circle torque and speed. The addition of the package, combined with the power of the SmartGrade technology, will boost machine productivity and uptime, positively impacting contractors' bottom lines.

To learn more about the new offerings for the GP-Series motor graders, as well as the full line of John Deere construction equipment visit <http://www.johndeere.com/> or contact your local dealer.

#### *About John Deere*

*Deere & Company (www.JohnDeere.com) is a world leader in providing advanced products, technology and services for customers whose work is revolutionizing agriculture and construction — those who cultivate, harvest, transform, enrich and build upon the land to meet the world's increasing need for food, fuel, shelter and infrastructure.*

**[www.johndeere.com](http://www.johndeere.com)** •

# REPAIR CONDUIT IN A SNAP!

- No Tape
- No Plastic Straps,
- No Metallic Straps

## NO KIDDING!

Designed especially for  
power, communications,  
and fiber optics



“The World Leader In Split Conduit Products”



**Conduit Repair Systems, Inc.**

The World Leader In Split Conduit Products

800-670-1804

fax: 435-673-8724

email: [crs@conduitrepair.com](mailto:crs@conduitrepair.com)



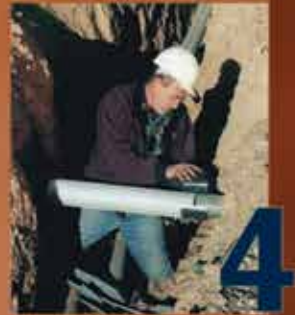
**1**  
Step 1: Remove  
Damaged Conduit



**2**  
Step 2: Cut Split  
Duct Conduit to Fit



**3**  
Step 3: Snap in  
Place



**4**  
Step 4: Attach  
Adapters



**5**  
Step 5: Finish Job  
in Record Time

Please Visit Our Website at [WWW.CONDUITREPAIR.COM](http://WWW.CONDUITREPAIR.COM)

# John Deere Delivers Power, Performance With Purpose-Built 700L PL40 Pipelayer-Ready Crawler



- The John Deere-designed and -manufactured 700L PL40 Crawler provides a powerful and rugged purpose-built solution for pipelaying applications.
- From the more powerful John Deere PowerTech™ engine to the enhanced lift capacity, the 700L PL40 delivers increased productivity and performance.
- Other key features include easy sideboom installation, a comfort-boosting cab and the seamless integrated pipelayer controls.

Purpose-built with customer needs top of mind, the John Deere 700L PL40 Crawler provides a powerful solution for pipelaying applications. Offering a lift capacity of 40,000 pounds, the John Deere-designed and -manufactured 700L PL40 model provides customers with operating ease and exceptional durability.

“Our customers face a multitude of challenges, from tight deadlines and budgets to adverse conditions, making it critical to have a dependable solution that can withstand the demands of the application,” said Matt Goedert, solutions marketing manager, John Deere. “With the 700L PL40, we are delivering a purpose-built solution that instills confidence in the operator while also tackling challenges headfirst. There is no need for fabrication work, as the 700L PL40 comes ready to bolt on the customer’s choice of sideboom. From increased visibility to enhanced controllability, the 700L PL40 delivers the performance our customers need on tough jobs.”

Equipped with a 135-horsepower John Deere PowerTech™ PVS 6068 engine, the 700L PL40 model boasts more hydraulic power compared to the base machine. This

improves overall engine performance and increases peak torque in the pipelayer-ready model. The closed-center, load-sensing hydraulic system includes a variable-displacement pump, and the amplified flow rates boost hydraulic performance. In addition, various controls, including Eco Mode, Auto Idle and Auto Shutdown, can be enabled through the sealed switch module to maintain productivity while reducing costs. The Eco Mode feature optimizes fuel economy by seamlessly adjusting the engine speed to meet the load. The Auto Idle and Auto Shutdown timers lower fuel costs and save warranty hours during inactivity or low use.

The purpose-built cab significantly reduces noise, increases visibility and enhances operator comfort in pipelaying applications. Customers can select a canopy cab option for additional visibility and improved communication on the job. Other notable features include an operator-focused design for easy entry and exit from the cab, a straight and center seat with excellent all-around visibility, and a standard rearview camera.

The seamless integration of pipelayer controls with the John Deere joystick controls further enhances productivity on the job site. The electrohydraulic sideboom control joystick combined with a proportional roller gives the operator precise control while using one hand to maneuver. The dual-path hydrostatic transmissions and the neutral counter-rotate setting deliver precise, predictable control along the trench without triggering abrupt movements. The built-in front console storage was conveniently designed so operators can cleanly install load-monitoring displays for easy viewing. The decel pedal offers multiple operator selectable modes, helping the operator customize his/her experience and increase ease of use.

Built at the John Deere factory in Dubuque, Iowa, the pipelayer-ready machine is designed to maximize uptime. The bolt-on design of the platform and mounting plates simplifies the installation of the customer’s preferred



Expanded Polypropylene Grade Ring System



## THE FASTEST AND LIGHTEST GRADE ADJUSTMENT SYSTEM.



### OVER 175,000 INSTALLED

Used for more than a decade in the municipal sewer industry Cretex Specialty Products is now making our Pro-Ring expanded polypropylene (EPP) grade system available to power utilities and the telecom industry. These rings are light weight, yet traffic rated and come in varying thicknesses from  $\frac{3}{4}$ " to 6" and we offer an angled or tapered ring as well. Our newest size has a 36" ID x 46" OD. Custom made sizes available.

AVAILABLE IN RECTANGULAR AND  
SQUARE SHAPES



800-345-3764 info@cretexseals.com www.cretexseals.com

# WE HAVE THE ROPE TO GET THE JOB DONE.



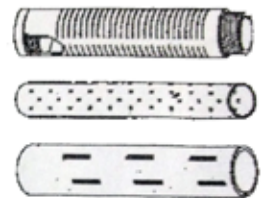
800-358-7673

[www.bucope.com](http://www.bucope.com)

sideboom, reducing machine downtime. Other features, including standard reversing fans with large fin spacings and improved idler shims, preload springs and easier track cleanout, further boast uptime. Additionally, improvements to the hose and harness routings over the previous models reduce wear and leak points. Extended service intervals and grouped maintenance points reduce time and costs. The fast fuel and quick fluid service options also reduce time, getting the machine back on the job sooner.

The 700L PL40 rounds out John Deere's lineup of pipelayer machines, which also includes the 850L PL100, 1050K PL170 and 1050K PL220. Machines in the PL lineup come with JDLINK™ telematics for five years in-base. Uptime is further enhanced through John Deere Connected Support™, a suite of factory and dealer tools, including the Service ADVISOR™ Remote, which improve machine service and support. For more information about the 700L PL40 pipelayer-ready configuration, as well as the full range of John Deere construction equipment and technology solutions, visit [www.JohnDeere.com](http://www.JohnDeere.com).

[www.JohnDeere.com](http://www.JohnDeere.com) •



## Atlantic Screen & Mfg., Inc.

- Well Rehab. Products
- Manholes
- Bentonite
- Filter Sock
- Inline Chemical Mixers
- Sampling Ballers
- Clear PVC Pipe
- Locking Caps

Manufacturers of Slotted & Perforated Pipe  
ranging from 1/2" to 24" in diameter

# 302-684-3197

FAX 302-684-0643

142 Broadkill Rd. • Milton, DE 19968

[www.atlantic-screen.com](http://www.atlantic-screen.com)

email: [atlantic@ce.net](mailto:atlantic@ce.net)

# Making perfect connections has never been simpler. In fact, now it's a **SNAP!**

**NEW** *SNAP* Connectors from Greaves. A revolutionary compression connector concept that gets the job done with just a few turns of a standard wrench!

- ▶ Time-saving, easy installation
- ▶ Superior pull-out strength and conductivity
- ▶ No bulky and costly tools and dies



# GREAVES

# EFFICIENCY PRODUCTION

## America's Trench Box Builder™

### Utility Contractor's Choice for Trench Shielding & Shoring

- Largest selection of shielding and shoring equipment available.
- Custom shields built to your specs.
- Site-Specific Engineering.
- OSHA Trench Safety Training.
- Jobsite Installation Assistance
- Efficiency Production knows that our success is based on your success!



Steel Trench Shields



Hydraulic Shores



Build-A-Box™



Aluminum Shields™



Stone Mizer™



Slide Rail System

800-552-8800

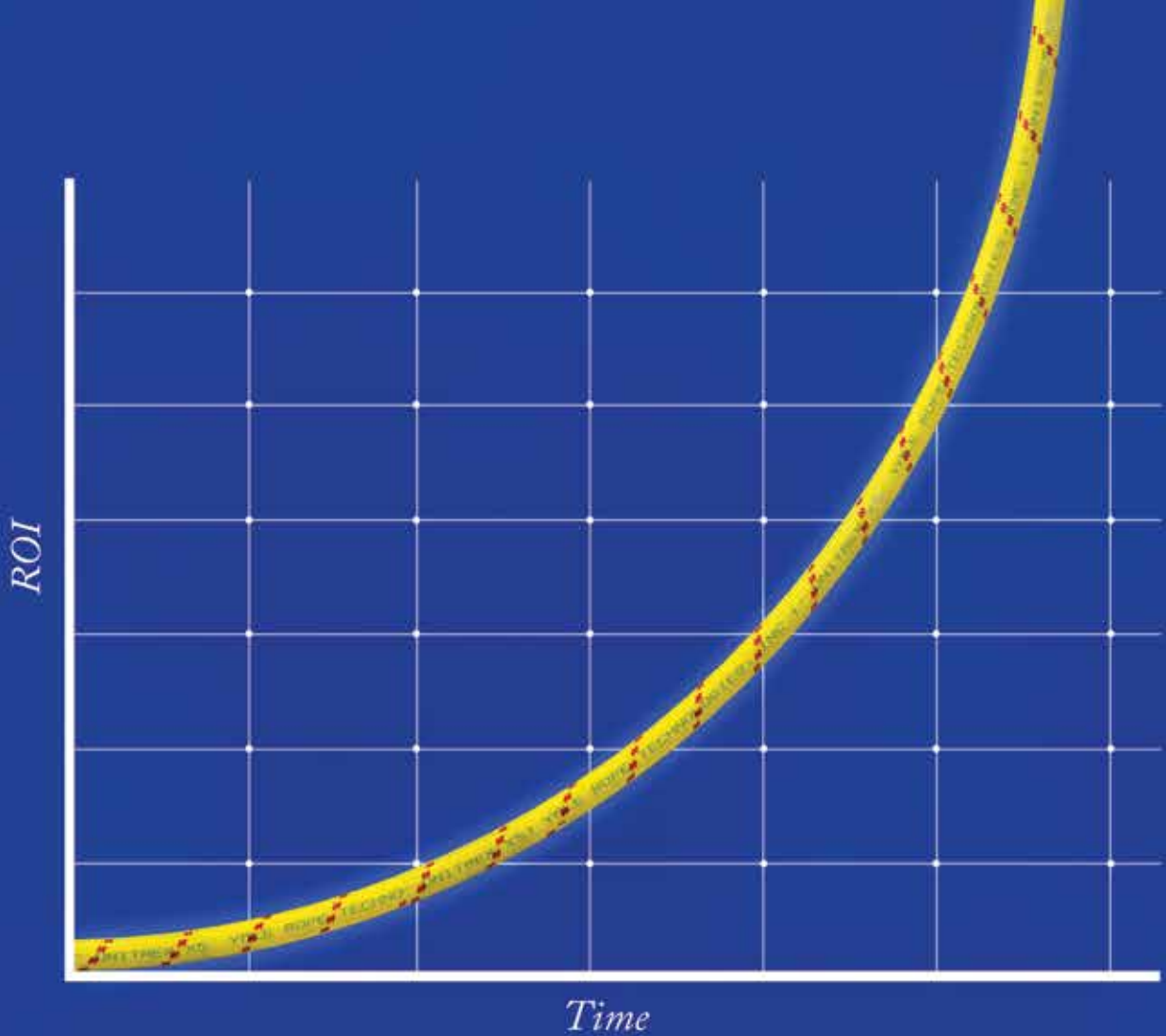
[www.encyproduction.com](http://www.encyproduction.com)

685 Hull Rd., Mason, MI 48854



# EFFICIENCY PRODUCTION

America's Trench Box Builder™



## Unitrex XS™ Max Wear. Unmatched performance in the field and in the boardroom.

Electric line stringing is easier and more economical with Unitrex™. Made with a core of Honeywell Spectra®, it is up to 10 times lighter than steel, while delivering comparable strength. The urethane-coated polyester jacket provides excellent abrasion resistance for great productivity that lasts.

To learn more, visit [www.yalecordage.com](http://www.yalecordage.com)

**YALE CORDAGE**  
Performance. Passion. Possibilities.

77 Industrial Park Road | Saco, Maine 04072 | p (207) 282-3396, f (207) 282-4620

# Monthly Buyer's Guide

---

- **Buccaneer Rope**  
22319 Alabama Hwy.79  
Scottsboro, Al 35768  
800-358-7673  
[www.bucrope.com](http://www.bucrope.com)
- **Manitex USA**  
3000 S. Austin Av.  
Georgetown, TX. 78626  
877-314-3390  
[www.manitex.com](http://www.manitex.com)
- **Rome Plows**  
475 N.6th. St.  
Cedartown, GA. 30125  
770-748-4450  
[www.romeplow.com](http://www.romeplow.com)
- **Cleanfix Reversible Fans**  
250 Wright Blvd.  
Stratford, ON, CN N4Z1H3  
866-489-3267  
[www.cleanfix.org](http://www.cleanfix.org)
- **M.B. Crushers**  
8730 Technology Way  
Reno, NV. 89521  
855-MBCRUSH  
[www.mbcrusher.com](http://www.mbcrusher.com)
- **Terex Utilities**  
1901 -14th AV. N.W.  
Watertown, SD. 57201  
800-233-2972  
[www.terex.com](http://www.terex.com)
- **Conduit Repair**  
761 Enterprise Dr. # 1  
St. George, UT 84790  
800-670-1804  
[www.conduitrepair.com](http://www.conduitrepair.com)
- **Morooka USA**  
11191 Air Park Rd.  
Ashland, VA. 23005  
[www.morooka.com](http://www.morooka.com)
- **U.T.V. INTERNATIONAL**  
8850 Danley Rd.  
Quebec, CN. H4T1M4  
514-345-0990  
[www.utvint.com](http://www.utvint.com)
- **Greaves USA**  
30 Industrial PK.  
Centerbrook, CT. 06409  
800-243-1130  
[www.greaves-usa.com](http://www.greaves-usa.com)
- **Morbark**  
8507 S. Winn RD.  
Winn, MI. 48896  
800-831-0042  
[www.morbark.com](http://www.morbark.com)
- **Yale Cordage**  
77 Industrial Park Rd.  
Saco, ME. 04072  
207-282-3396  
[www.yalecordage.com](http://www.yalecordage.com)
- **Hogg Davis**  
3800 Eagle Loop  
Odell, OR. 97031  
855-883-4909  
[www.hoggdavis.com](http://www.hoggdavis.com)
- **Ring Power**  
9901 Ringhaven DR.  
Orlando, FL. 32824  
407-855-6195  
[www.ringpower.com](http://www.ringpower.com)

# WE LISTEN. WE RESPOND. WE DELIVER.

FOCUSED ON BEING YOUR STRATEGIC PARTNER - DELIVERING ROBUST EQUIPMENT AND LIFECYCLE SOLUTIONS.



Auger Drills



Digger Derricks



Aerial Devices



Parts & Service Support

**Everything we do at Terex Utilities starts with YOU – our customer.**

We listen to your challenges and needs. We work to get to know you – and what you need in order to get the job done. The Terex team is committed to delivering reliable equipment, innovative technology, quality service as well as parts and auger tooling. The company has been the leader in technology and innovation in the electric utility industry for more than 70 years. We are proud of our history and excited for what's to come.

**Give us a call at 844-TEREX-4U for your equipment, service and parts needs.**

[www.terex.com/utilities](http://www.terex.com/utilities)



**TEREX®**

**WORKS FOR YOU.™**

## Ad Index

| Company                      | Pg. | Website  |
|------------------------------|-----|--|
| Atlantic Screen & Mfg., Inc. | 14  | <a href="http://www.atlantic-screen.com">www.atlantic-screen.com</a>           |
| Buccaneer Rope               | 14  | <a href="http://www.bucrope.com">www.bucrope.com</a>                           |
| Clean Fix                    | 3   | <a href="http://www.cleanfix.org">www.cleanfix.org</a>                         |
| Cretext                      | 13  | <a href="http://www.cretexseals.com">www.cretexseals.com</a>                   |
| Dorlen                       | 6   | <a href="http://www.oil-alert.com">www.oil-alert.com</a>                       |
| Efficiency Production        | 16  | <a href="http://www.efficiencyproduction.com">www.efficiencyproduction.com</a> |
| eMars Inc                    | 20  | <a href="http://www.emarsinc.com">www.emarsinc.com</a>                         |
| Greaves                      | 15  | <a href="http://www.greaves-usa.com">www.greaves-usa.com</a>                   |
| Hogg Davis                   | 5   | <a href="http://www.hoggdavis.com">www.hoggdavis.com</a>                       |
| Krenz Vent                   | 2   | <a href="http://www.krenzvent.com">www.krenzvent.com</a>                       |
| Morooka                      | 7   | <a href="http://www.morooka.com">www.morooka.com</a>                           |
| Ring Power                   | IFC | <a href="http://www.ringpower.com">www.ringpower.com</a>                       |
| Rome Plow                    | IBC | <a href="http://www.romeplow.com">www.romeplow.com</a>                         |
| Safety Vision                | BC  | <a href="http://www.safetyvision.com">www.safetyvision.com</a>                 |
| Terex                        | 19  | <a href="http://www.terex.com">www.terex.com</a>                               |
| UTV                          | 9   | <a href="http://www.utvint.com">www.utvint.com</a>                             |
| X Insurance                  | 1   | <a href="http://www.xinsurance.com">www.xinsurance.com</a>                     |
| Yale Cordage                 | 17  | <a href="http://www.yalecordage.com">www.yalecordage.com</a>                   |

## TAKING CHANCES WITH DAVIS - BACON MANUAL PAYROLL COMPLIANCE?

EACH WEEK, EVERY CHECK HAS 30+ WAYS TO BE A LOSING PROPOSITION.



NONE OF OUR 15,000+ CLIENTS HAS EVER HAD A LEGAL COMPLIANCE ISSUE... NOT ONE.

480-595-0466



[emarsinc.com](http://emarsinc.com)

**Be Davis-Bacon Compliant In Minutes**

# ROME

Available in 10, 12, 14, and 16 foot widths



Manufacturing Heavy Duty Construction and Agricultural Equipment Since 1932

ROME Plow has been the premier name in heavy duty disc plows for over 87 years.

Available in 16, 18, 20, 24, and 30 foot widths



ROME has been manufacturing pivot dump and ejector scrapers for over 45 years for the construction and agricultural industries.



Available with 36 or 42" blades, and up to 20' wide

ROME also manufactures a full line of leveling scrapers (with and without gates) and haul road maintenance tools (with and without rollers)



Available in 18 and 22 yard versions

For more information on our products or for the closest authorized ROME dealer please contact us.

Available in 24, 28, 31, 34 and 37 Yards

770-748-4450 - [www.romeplow.com](http://www.romeplow.com)



Steel Tracks available to fit any articulation tractor

# STAY SAFE ON THE JOB



The **NEW** Observer™ 4401 HVR  
The mobile video recorder that  
protects **YOU**.



### Maximize operational awareness

Records up to 5 HD cameras and 512GB of storage

### Encourage safe and effective practices

Use footage as first-hand training videos

### Combat false accusations

The truth lies in the recorded video

**800.851.4764**

[cementcamerasales@safetyvision.com](mailto:cementcamerasales@safetyvision.com)

[www.safetyvision.com](http://www.safetyvision.com)

**SAFETY  
VISION®**

MOBILE VIDEO SURVEILLANCE SOLUTIONS