

Building

June 2025

Maintenance & Safety

Products



**Tips for
Longer, Safer
Power Tool
Battery Life**

**Industrial Safety:
Preventing Slips and Falls
Virtually Everywhere**

jESCOHYDRATILT™ DUMPERS



HYDRAULICALLY CONTROLLED HOPPERS

These units are ideal where control of the quantity of material dumped or the rate of discharge is critical. They operate off the hydraulic system of your forklift and come complete with male quick-disconnect hoses for easy attachment to the forklift.

jESCO® PARTITIONS



DIAMOND WIRE MESH ENCLOSURES

Send us the footprint of your project and allow our engineers to assist you on your next project!

Division 10 22 13.



CONVERT YOUR FORKLIFT INTO A WORK PLATFORM!

Available in 40", 72", 96", and 120" lengths.

jESCO® WORK PLATFORM



jESCOGARD®

PROTECTIVE GUARD RAILING

These versatile guards act as both a visual and physical barrier to help protect people and property such as aisles, docks, conveyors and other equipment. Bolted rails are designed and tested to stop a 10,000 lbs load impacting at 4 mph from breaking through. Lift-out rails shown. All hardware is included.



Call 800-529-6697

Visit www.JescoOnline.com

jESCO
— Since 1932 —

Jesco Industries, Inc.
Ph: 517-542-2903 Fax: 517-542-2501
PO Box 388 Litchfield, MI 49252-0388

Find.
Fix.
Fast.



- ✔ Busway & Plugs
- ✔ Circuit Breakers
- ✔ Fuses
- ✔ Motor Control Centers
- ✔ Panelboards
- ✔ Safety Switches
- ✔ Switchgear
- ✔ Transformers

If we don't have what
you're looking for,
we find it.

GET 10% OFF
YOUR FIRST ONLINE ORDER

With code

ELECUR10

**Home of Thousands of Transformers,
Breakers, Switches, Bus Plugs,
Circuit Breakers and Motor Controls.**



250,000⁺ of
inventory



Every product
certified



Quick Ship
Fast lead-time

EMSCO stocks obsolete, reclaimed, and
hard to find electrical components.

www.EMSCOMN.com



**24-HOUR
HOTLINE**

Get what you need, when
you need it.

CONTACT US

800.328.1842

24-Hour Emergency Line

PG 4 Industrial Safety: Preventing Slips and Falls Virtually Everywhere

PG 10 Tips for Longer, Safer Power Tool Battery Life

PG 14 Winning the War on Fog

PG 18 Ad Index



Pg 4

Building Maintenance & Safety Products

Vol. 25 Issue 6

PRESIDENT

Glen Hobson
205-441-5591
glen@handfmedia.net

ASSOCIATE PUBLISHER

Steven Goodwin
205-624-2181
steve@handfmedia.net

ADMINISTRATIVE DIRECTOR

Steven Hobson
steven@handfmedia.net

EDITOR

Brandon Greenhill
brandon@handfmedia.net

CREATIVE/ WEB DIRECTOR

Jacklyn Greenhill
jacklyn@handfmedia.net

The test tools you need - for the information you require.



From monitoring equipment, tools and test instruments to the need for on-going calibration requirements and the training to understand everything - there is no wonder the maintenance professional is overwhelmed. With the availability of new and upcoming technology, information overload can quickly set in when trying to put together the best maintenance solution. **That's where we come in.** EDE can demystify electrical testing programs, offer support, training programs and the high tech equipment to make your maintenance activities straight forward and motors and generators doing what they are supposed to do - run. We will help you **Find the Way.**



• 970/292-8207 • www.edeinst.com •

P.O. Box 1568 • Pelham, AL 35124
Phone: 205-441-5591 • Fax: 205-624-2181



Building Maintenance & Safety Products™ is published twelve times a year on a monthly basis by HFG Media. *Building Maintenance & Safety Products™* is distributed free to qualified subscribers. Non-qualified subscription rates are \$57.00 per year in the U.S. and Canada and \$84.00 per year for foreign subscribers (surface mail). U.S. Postage paid at Birmingham, Alabama and additional mailing offices.

Building Maintenance & Safety Products™ is distributed to building maintenance and safety managers in manufacturing, apartment buildings, and school systems nationwide. Publisher is not liable for all content (including editorial and illustrations provided by advertisers) of advertisements published and does not accept responsibility for any claims made against the publisher. It is the advertiser's or agency's responsibility to obtain appropriate releases on any item or individuals pictured in an advertisement. Reproduction of this magazine in whole or in part is prohibited without prior written permission from the publisher.

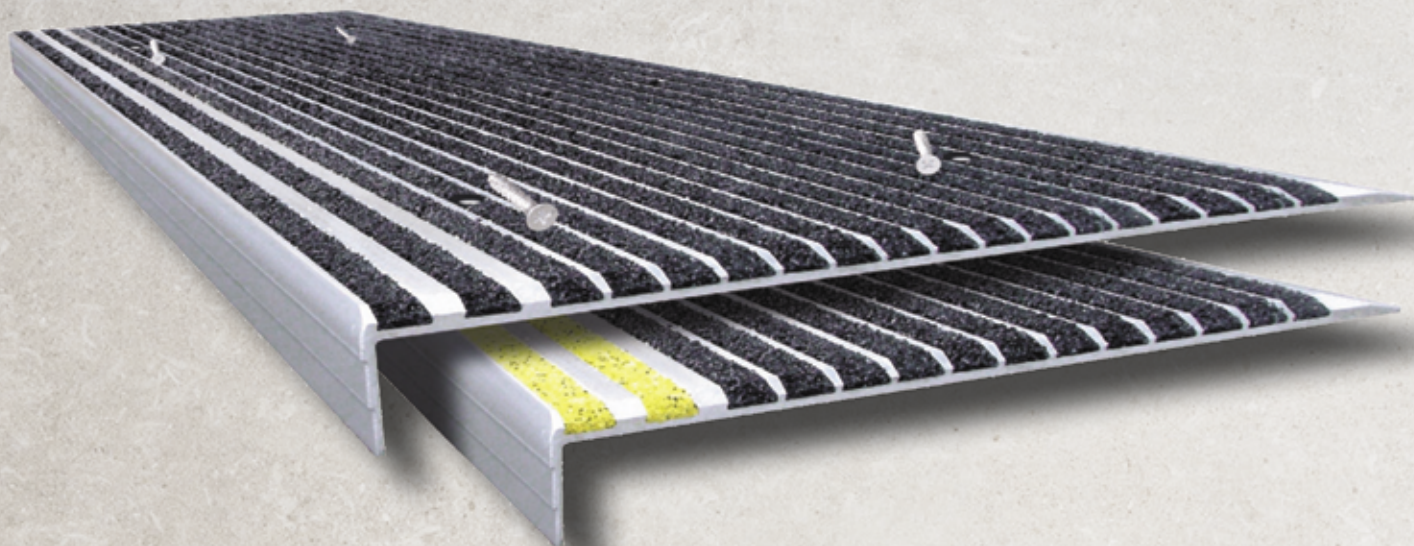
POSTMASTER: Send address changes to
HFG Media, Inc. P.O. Box 1568
Pelham, AL 35124
PRINTED IN THE USA

Worn, Slippery, or Damaged Stairs?

Renovate with

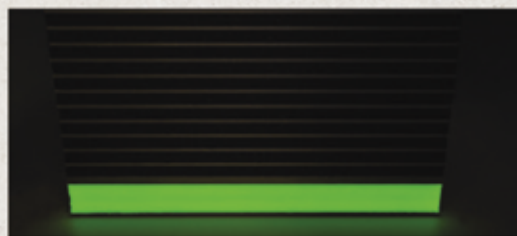
STAIRMASTER®

Anti-Slip Stair Treads



#1 in Egress Safety for Over 100 Years!

- Low cost renovation
- Excellent anti-slip protection
- Withstands heavy traffic
- For indoor or outdoor use
- Quick and easy installation on any existing stair



Also available in NITEGLOW™



**PROUDLY MADE
IN THE USA**

Specify Wooster

"Make Every Step a Safe One"

1.800.321.4936

www.woosterproducts.com

sales@wooster-products.com



Industrial Safety: Preventing Slips and Falls Virtually Everywhere

A new type of durable safety coating is increasing traction and reducing maintenance on floors, loading docks, platforms, ramps, walkways, and truck trailers

Industrial manufacturing, warehouse, and distribution centers can have hundreds of thousands of square feet of production and storage space that is prone to dangerous slips, trips, and falls. The risk is heightened when surfaces are wet from cleaning, spills are present, and personnel are busy with work tasks. Cold storage can be slippery due to condensation or ice melt. Other areas can be also susceptible to slip and fall risk when subject to wet weather outdoors.

According to The National Institute for Occupational Safety and Health (NIOSH)'s Traumatic Occupational Injuries Fast Facts webpage, the "most recent traumatic injury data show [that] 27% of the 888,220 nonfatal work injuries resulting in days away from work in 2019 were related to slips, trips, and falls."

Slips result from a loss of balance caused by too little friction between people's feet and the surface they walk or work on. Loss of traction is the leading cause of workplace slips. Although conventional non-slip coatings have been used to improve traction, these tend to wear quickly and need to be reapplied often at considerable expense.

Fortunately, a new category of durable, high-tech, all epoxy coating is dramatically increasing traction and improving safety in a wide range of slip and fall prone areas such as production floors, warehouse space, loading docks,

Maddox is the one-stop shop for your transformer needs

Founded by a team of industry veterans focused exclusively on the transformer and transformer-related needs of industrial and commercial clients.



Sell

Maddox stocks and sells the highest quality transformers from dry types and padmounts to substations.

Rent

With thousands of units in stock, Maddox rents out transformers for the temporary power needs of customers across North America.

Repair

With shops on both coasts Maddox inspects, tests, and repairs transformers to ensure that they are in top working condition.

Purchase

We offer a great price that includes handling all the transportation and environmental issue.

platforms, ramps, walkways, emergency staircases, stair landings, and ladders. Beyond this, due to the extra traction the non-slip coating provides, it is not only being used to improve personnel footing on truck trailers but also to stabilize the heavy trailer loads.

This new type of coating is designed to last years even in areas heavily travelled on foot, which reduces the need for maintenance and replacement. The coating type can be quickly and easily applied by facility personnel, minimizing cost and facility disruption.

Problematic Short-Term, Non-Skid Coatings

Improving the traction of workplace walking surfaces to increase safety is not a new concept. However, traditional options quickly become compromised in industrial settings.

When companies apply conventional non-skid coatings to these surfaces, aggregate is usually mixed in or sprinkled on top in an attempt to embed it in the coating to enhance traction. The challenge is that the aggregate quickly pulls loose from most coatings, impairing traction, for a couple of reasons.

When aggregate is mixed into the coating, a problem emerges with low viscosity, non-skid products.

“The coating thickness has to be substantial enough to hold the aggregate, the non-slip material, in suspension. However, most conventional coatings cannot keep the aggregate in suspension. With low-viscosity coatings containing a low percentage of epoxy, the aggregate falls to the bottom of the bucket during mixing, so you are essentially forced to apply it on top,” says Bob Finkenaur, owner of a Veteran Owned Small Business, who has years of experience providing high-value formulated products and solutions to a wide variety of professional and consumer markets.

“Most conventional non-skid coatings also shrink considerably after application due to water or solvent evaporation. Often, when the coating dries or cures, its thickness is only about half [the thickness] of when it was wet. The relative thinness of the coating is another reason that any embedded aggregate is prone to fall out, reducing traction,” he adds.

Consequently, a new coating with additional aggregate

must be reapplied frequently, and internal safety standards may only be met only a fraction of the desired time.

Long-Term Prevention of Industrial Slips and Falls

As a solution, to improve traction and prevent slips and falls for the long-term in various industrial settings, innovators have developed a new category of extremely durable, all epoxy coatings designed to embed aggregate in the coating for years. The approach facilitates meeting internal safety standards and virtually eliminates the need for non-skid coating reapplication, reducing maintenance cost.

For example, the non-skid coating Form-A-Tread® SL (Self Leveling) by Form-A-Tread Company is a combination of a low-to-medium viscosity epoxy binder consisting of 100% solids and a specialized aggregate broadcast on top. The coating can be used in a variety of manufacturing or storage environments on concrete, asphalt, metal diamond plate, wood, and other porous and non-porous substrates. The formulation along with its topically applied aggregate is designed for indoor and outdoor use and can last for years even when exposed to sunlight, chemicals, weather, and temperature extremes.

The patented coating provides a very durable, slip-resistant surface on industrial flooring, walkways, ramps, and other large areas with high pedestrian or vehicle traffic. The coating is easy to mix and apply by hand. Installation is fast and the surface is typically ready for use within hours. The coating has already been utilized by some giants of industry.

In the case of Consolidated Edison, Inc., one of the nation's largest investor-owned energy-delivery companies, the company's EH&S team proactively sought to reduce the risk of slip and fall incidents across multiple locations, as well as address an issue with shifting cargo loads while transporting equipment and supplies.

According to Richard Stewart, a Con Edison EH&S manager supporting Shared Services organizations, Con Edison has used the Form-A-Tread SL coating on a wide variety of surfaces and applications. This has included many high traffic areas such as a receiving warehouse in Astoria; stairways in the Bronx; walkway ramps and

LONE WORKER PROTECTION
FALL PROTECTION
SUSPENSION TRAUMA PREVENTION

SECURE 1/2 MILE
LINE-OF-SIGHT 



ASSIGNED MONITORING ATTENDANTS



Grace Web Portal Dashboard



Custom Check-In Schedule



TEXT/Email Notification

Receive a GPS Map Link

Check-In System



LEARN MORE



GRACE GATEWAYS

Iridium Satellite/Cellular

Mobile or Portable Worksite Models

SALTI™ System Loop Test Indicator

Supports up to 20 Grace Pendants



WORKFORCE® LONE WORKER PENDANT

Fall Detection

Manual Panic Button

Motion Detection

GPS Location



dock loading ramps in Staten Island; and even plastic bumpers on utility vans that can become quite slick when wet.

The innovative use to secure tractor-trailer loads would also win the team that worked on this initiative a Con Edison 2021 Con Edison EH&S Team Award. This recognized the team's extraordinary contribution to ensuring a safe workplace, achieving operational excellence, and improving how tractor-trailer loads are secured.

"When we got feedback from all the groups involved, they were impressed how the coating solved two issues at once," says Stewart. "The drivers loved it because even on rainy, windy days the coating improved safety by providing sufficient traction and footing [on the aluminum trailer beds]. The improved traction also helped ensure large cargo would not shift on the trailer during transport."

For his involvement with the project, Stewart was part of the team recognized in a Con Edison news article, and the project won Con Edison's EH&S Sustainability Award.

He notes that as an EH&S Manager he often responds to issues with a solution or recommendation to help eliminate similar hazards across multiple locations.

"Working with a durable non-slip coating that can be applied to a variety of materials such as metal, concrete, asphalt, and wood, allows us to use the same solution to resolve many different issues," concludes Stewart. "It is a very customizable product so wherever there is a need, we can use it. It gives us a lot of options."

As industrial facilities seek to prevent slip and fall hazards across a greater range of workplace walking surfaces, implementing durable, non-skid, all epoxy coatings will effectively enhance safety for the long-term. Since the option is designed to withstand high foot traffic in many settings, it will also significantly reduce maintenance and replacement costs.

For more information: call 610-994-2138; email info@rgfmaterials.com; visit: www.form-a-tread.com •



An ounce of prevention is worth a pound of cure



**CRITTER
GUARD**

Line Guard | Pole Guard | BirdBloc
Learn More at CritterGuard.org





Upgrade Your Building Wire with Copper-Clad Aluminum (CCA).



Cost Stable

Reduce your exposure to volatile price fluctuations.



Code Compliant

NEC referenced since 1971, Copperweld is accepted by builders and inspectors.



Easy to Install

A similar metal to copper for electrical connections, CCA is light and easy to bend.



COPPERWELD[®]
BUILDING WIRE



Copper where it counts[™]

Contact us for sales and info:

615-622-4662

buildingwire@copperweld.com

copperweld.com

Tips for Longer, Safer Power Tool Battery Life



Power Tool Institute identifies easily employed best practices

Power tools and their batteries are rugged instruments designed to perform tough jobs, but they still require care to maintain safe, optimum performance. There are steps users can take to extend tool and battery life, and help keep power tools operating at peak performance for a longer life cycle.

The Power Tool Institute has compiled a list of best practices for safer use of batteries and power tools.

Safe handling

Start by reading the manufacturer's instruction manual – and only use original manufacturer's system components of tool, battery and charger. Do not impact or damage a battery (for example, do not use it as a hammer), use it solely for the defined purpose as specified by the manufacturer. If a battery has received a sharp blow, been dropped, or is damaged, discontinue use.

Regularly inspect batteries for signs of damage, such as crushing, cuts, or punctures. Be mindful of abnormal battery behavior, such as failure to fully charge or hold a charge, longer-than-usual charging times, noticeable drop in performance, liquid leakage from the battery, or melted plastic anywhere on the pack. These are indications of an internal problem.

Never modify, disassemble, or tamper with the battery because the performance can become unpre-



STRUCTURAL STEEL CO., INC.

Pre-Engineered Buildings Built to Withstand The Rugged Northeast Winters

- Commercial, Industrial and Agricultural Buildings Built to Satisfy Your Building Needs
 - Pre-Engineered Steel Packages
 - Pre-Engineered Post Frame Packages
 - Mini Storage Buildings



*Call For a Quote On
Your Next Project*

***We Manufacture 26 & 29 ga.
Steel Roofing & Siding***



STRUCTURAL STEEL CO., INC.



607 Rt. 13 S, Cortland, NY 13045

National: 1-800-323-7739



(607) 753-9384 • Fax: (607) 753-6272 • www.essexsteel.com

dictable and dangerous. As a general practice, it is best to unplug battery chargers and remove battery packs from them when not in use.

Safe storage

Do not store batteries on their chargers. Always use and store the battery within the temperature limits stated by the manufacturer. Do not store in a closed location where sunlight may cause elevated temperatures, such as near a window or inside a vehicle. Do not store or transport the battery in a container with loose metal objects, such as coins, keys or nails, which may contact the terminals.

Safe response to overheating

Though batteries and chargers are safe to use when operated properly, in rare instances a battery may overheat. If the battery is exhibiting signs of overheating (flames, smoke, smoldering, or melting), immediate action is required. If connected to a charger when exhibiting signs of overheating, always unplug the charger first. After unplugging the battery charger, then pour copious amounts of water on the battery and then submerge the battery (including any attached tool or charger – do not directly touch/disconnect the battery) in a sturdy container filled with water. When transferring the battery, avoid direct contact with the battery (use a long-handled shovel) and use appropriate personal protective equipment to protect face, hands and body, since there is a risk that overheated batteries may vent, explode, or emit flame.

If the battery is exhibiting flames, continue using copious amounts of water until the flame is extinguished, then submerge the battery (including any attached tool or charger) in a sturdy container filled with water. If water is not available, dirt, sand or a conventional ABC extinguisher may be used in an attempt to smother and cool the bat-

tery until water is available.

Keep the battery submerged, in a well-ventilated location, for at least 24 hours and at least 15 feet away from any combustible items. Contact the manufacturer for guidance on proper disposal.

For more information about extending the life of power tools and their batteries, visit <https://www.powertoolinstitute.com/>.

About PTI

With the vision to unify and educate others about power tools, since its founding in 1968, the Power Tool Institute (PTI) has established itself as the leading organization for building global understanding of power tools and for maintaining high standards of safety in the industry. Its members, a list of whom can be found here, represent market-leading brands in the areas of portable and stationary power tools. PTI's members are committed to improving the industry and to being the premier resource for power tool education. For more information, contact PTI 216-241-7333 or pti@powertoolinstitute.com.

On the Web: www.PowerToolInstitute.com and www.TakeChargeOfYourBattery.com •



FUSEBOX SAFETY MATS BY **RHINO**

Rhino Switchboard Mats For The "If" in "Life."

Extreme-Duty Series Class 4

1/2" thick Corrugated Surface
Test Voltage 50,000 VAC
Proof Test 40,000 VAC
Recommended 36,000 VAC



Fuse-box switchboard mats should be used in any area where Health and safety risk assessment shows a possibility of high-voltage shock. Easily carried to job or construction sites, Rhino Switchboard Mats provide a pro tempore electrically insulating mat

Safety Focused. Results Driven

Rubber-insulating gloves, insulated hand tools, and switchboard-insulating mats are vital components of a successful PPE system. All should be used in conjunction with engineering safeguards and associated work practices.

Quality You Can Count On

All are tested to ASTM D178/ANSI J6.7 specifications with certification printed on the back. Two sizes available 2ft X 3ft and 3ft X 3ft, and two gauges

Available at Electrical and Safety Supply Houses and Home Depot or Contact us at 713-228-5543 / Info@rhinomats.com

www.rhinoswitchboardmats.com

Heavy-Duty Series Class 2

1/4" thick Diamond Surface
Test Voltage 30,000 VAC
Proof Test 20,000 VAC
Recommended 17,000 VAC



SLIP AND FALL PREVENTION!

Since
1993

NEW!



TESTING DYNAMIC
COEFFICIENT OF
FRICTION (DCOF)
ASM 925

DIGITAL ASM 825A SLIP METER

WET AND DRY TESTING
CALIBRATES TO ANSI/NFSI B101.1

SAFE FLOORS MAY INCREASE PRODUCTIVITY
AND WILL CERTAINLY REDUCE LOSSES

SCOF RESULTS WITH AN EASY-TO-USE
PORTABLE FLOOR FRICTION TESTER

PH: 941-681-2431 | FAX: 941.681.2487

AMERICAN SLIP METER®

WWW.AMERICANSLIPMETER.COM



Winning the War on Fog

Brass Knuckle's proprietary coatings create a new world standard for anti-fog lenses

Lenses can fog in almost every application. Going from cool to warm air. Going from outdoor to indoor environments. In high humidity. During strenuous work that causes perspiration. Even warm breath in a cool room or the heat rising from a motor can cause lenses to fog.

Fog means double trouble. First, fog reduces visibility. That's a hazard in itself. Second, fogged-up lenses make workers want to remove their safety glasses. No eye protection equals "out of compliance" — and, most importantly, in those vulnerable seconds or minutes, eyes are exposed to potential hazards where eye injuries can occur.

Before a U.S. anti-fog standard existed, one seller of worker protection, Brass Knuckle, decided it was important to measure its eye protection products by a standard. The company began with EN 166/168, the European standard and the most stringent anti-fog standard in the world at the time. Then Brass Knuckle went beyond it. Voluntarily.

The result is Brass Knuckle's proprietary anti-fog lens coating, which uses a groundbreaking technology that delivers better, longer-lasting fog-free protection than competing products. It was then, and re-

mains, the toughest anti-fog standard in the world, exceeding ANSI and EN standards. The result is two coatings, BK-Anti-FOG and BK-Anti-FOG+, that provide extreme anti-fog performance and improve worker safety and productivity.

Brass Knuckle BK-Anti-FOG is their original proprietary anti-fog coating that offers excellent performance and a long-lasting, fog-free view under even the most demanding hot and humid conditions. Washable and durable, BK-Anti-FOG formulas allow lenses to resist fog longer than competitors' anti-fog treatments, and that extra time is what is needed for lenses to come into balance with temperature fluctuations, the principal cause of lens fogging.

Brass Knuckle BK-Anti-FOG+ is their proprietary premium anti-fog coating



*"As a safety professional, you always want your workers to have access to leading edge safety tools that improve safety and focus. Working with **COOLSHIRT SYSTEMS** over the past two years allowed me to help design a tool by lineman for lineman."*

*The **A.R.C. Hybrid Cooling System** by **COOLSHIRT SYSTEMS** allows linemen to remain more focused and less fatigued by reducing their core body temperature in extreme environments, therefore reducing the possibility of unintended accidents."*

-James "Jim" Bonner
Compliance Coordinator- Retired
Alabama Power



A.R.C. Hybrid Cooling System

Complete Arc Rated Portable Cooling Solution

Developed in conjunction with major power companies for use in extreme heat conditions, the **A.R.C. Hybrid Cooling System** uses liquid cooling to reduce fatigue, injury, and heat stress related illness.

Designed specifically for use by linemen, the **A.R.C. Hybrid Cooling System** features a compact design with a custom woven strap mounting system. The use of S-hooks offers the versatility of mounting inside or outside of the bucket. The system includes our mobile ice based cooler, a 7 hour lithium ion battery with charger and a **CAT 2, 12 CAL** rated Liquid Cooled Vest for **70E Arc Flash** protection.

Designed with portability in mind, measuring **6" x 6" x 20"** and weighing in at **less than 10 lbs dry**, the unit is entirely self-contained and built to last with a 20,000 hour pump.

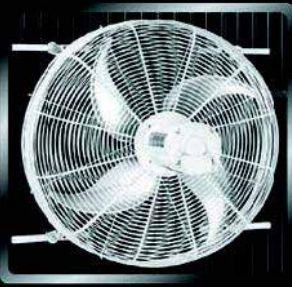


A.R.C. Hybrid Cooling System
2002-0017



COOLSHIRT[®]
LIQUID COOLED GARMENTS

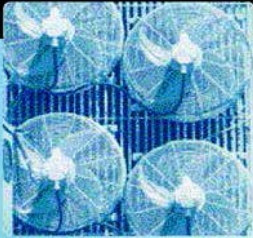
Get Cool!



Extend transformer life!

Increase transformer capacity up to 166%!

- expert technical assistance
- low sound levels
- energy-efficient motors
- large inventory
- one-piece cast aluminum blades
- galvanized or stainless steel guards



p.o. box 187 germantown, wisconsin 53022

262.255.2310

www.krenzvent.com

that delivers anti-fog protection that exceeds the EN standard by 4400 percent — or 44x the best standard in the world! Where competitive anti-fog coatings protect against fogging for two minutes, best-in-class BK-Anti-FOG+ protection lasts more than six minutes when tested under the EN standard. In the world of eye protection, it's as good as anti-fog protection gets.

"We could apply any manner of anti-fog chemical to the lens and say we have anti-fog protection. Instead, we developed our own higher anti-fog standard and then hold our products to that standard," said Jeff Cullman, vice president of Brass Knuckle. "We offer extreme protection against fogging, a huge step forward for ensuring compliance."

BK-Anti-FOG and BK-Anti-FOG+ are available on a wide variety of Brass Knuckle protective eyewear, serving various fits and functions. For more information, visit www.brassknuckleprotection.com/brass-knuckle-anti-fog-technologies/


"PROP THAT DOOR OPEN WITH THE PROPPER"

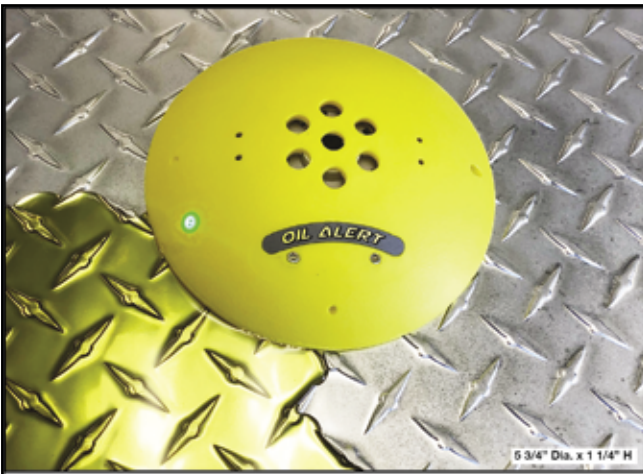
Commercial, Residential, Industrial, Hotel/Motel & Deliveries

- Compact, Lightweight - Only 5 oz.
- Magnitized for Convenient Storage
- Easy To Open, Folds When Not In Use
- Safe, Secure Design, Never Slips Off Hinge



www.PopperStopper.com

MADE IN USA 



OIL ALERT[®] LIQUID LEAK DETECTOR

DETECT OIL LEAKS AND SPILLS...FAST!

- AVOID OPERATIONS SHUT-DOWN
- REDUCE ENVIRONMENTAL RISKS
- MINIMIZE COSTLY CLEAN-UP
- MONITOR OFF-SITE EQUIPMENT

A small amount of oil (1/32 inch) seeping under Oil Alert activates it's loud "on/off" alarm and/or relay contact output. The low profile dome shaped unit guards against undetected leakage in areas of oil lubricated / hydraulic equipment, stand-by generators, pressurized piping and fuel oil storage locations...

5 year Limited Warranty

DORLEN Products Inc.
6615 W. Layton Ave. Milwaukee, WI. 53220

**Go to WWW.OIL-ALERT.COM
OR CALL: 1-800-533-6392
FOR MORE INFO!!**



**From Basement to Roof
Track Moisture Problems**

**Moisture Meters
and Data Loggers**

**for all Applications
in the Building Industry**

**Need a moisture meter? Buy Lignomat.
We make accurate, easy-to-use meters.**



Scan QR Code or
call and talk to one
of our meter experts.

Lignomat, Portland, OR USA

800-227-2105

Lignomat
moisture measurement

Ad Index

Company	Pg.	Website
American Slip Meter	13	www.americanslipmeter.com
Cool Shirt	15	www.coolshirt.com
Copper Weld	9	www.copperweld.com
Critter Guard	8	www.critterguard.org
Dorlen	17	www.oil-alert.com
EDE	2	www.edeinst.com
Emsco	1	www.emscomn.com
Essex Steel	11	www.essexsteel.com
Grace Industries	7	www.graceconnectedsafety.com
Jesco	IFC	www.jesco.com
Krenz Vent	16	www.krenzvent.com
Lignomat	17	www.lignomat.com
Maddox	5	www.maddox.com
Propper Stopper	16	www.propperstopper.com
Rhino Switchboard Mats	13	www.rhinoswitchboardmats.com
Safe T Nose	BC	www.safetnose.com
Wooster Products	3	www.woosterproducts.com
Working Concepts	18	www.safeworker.com

Work shouldn't hurt.

SOFT KNEES® No-Strap Knee Pads



STOP a LADDER®

Another fine **ergoKNEEL** product
www.ergokneel.com



888-456-3372 • www.safeworker.com • info@safeworker.com

jESCOHYDRATILT™ DUMPERS



HYDRAULICALLY CONTROLLED HOPPERS

These units are ideal where control of the quantity of material dumped or the rate of discharge is critical. They operate off the hydraulic system of your forklift and come complete with male quick-disconnect hoses for easy attachment to the forklift.

jESCO® PARTITIONS



DIAMOND WIRE MESH ENCLOSURES

Send us the footprint of your project and allow our engineers to assist you on your next project!

Division 10 22 13.



CONVERT YOUR FORKLIFT INTO A WORK PLATFORM!

Available in 40", 72", 96", and 120" lengths.

jESCO® WORK PLATFORM



jESCOGARD®

PROTECTIVE GUARD RAILING

These versatile guards act as both a visual and physical barrier to help protect people and property such as aisles, docks, conveyors and other equipment. Bolted rails are designed and tested to stop a 10,000 lbs load impacting at 4 mph from breaking through. Lift-out rails shown. All hardware is included.



Call 800-529-6697
Visit www.JescoOnline.com

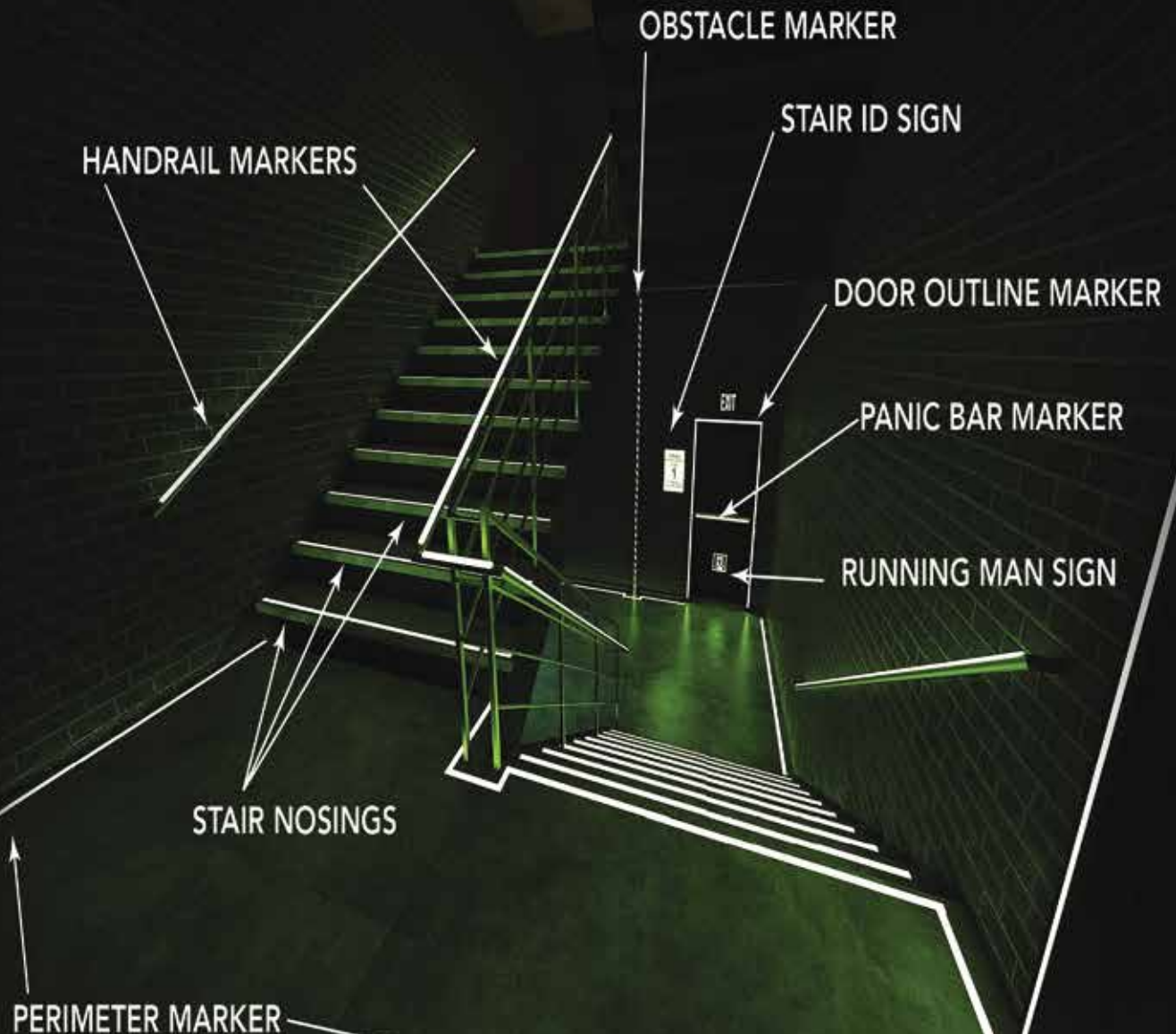
jESCO
— Since 1932 —[®]

Jesco Industries, Inc.
Ph: 517-542-2903 Fax: 517-542-2501
PO Box 388 Litchfield, MI 49252-0388

Safe-T-Nose[®]

LEAVE NO DOUBT • THIS WAY OUT • EXIT SAFELY

SAFETNOSE.COM • 1-855-723-6673



**IFC/IBC REQUIRED EGRESS
MARKINGS AND SIGNS**