

Building

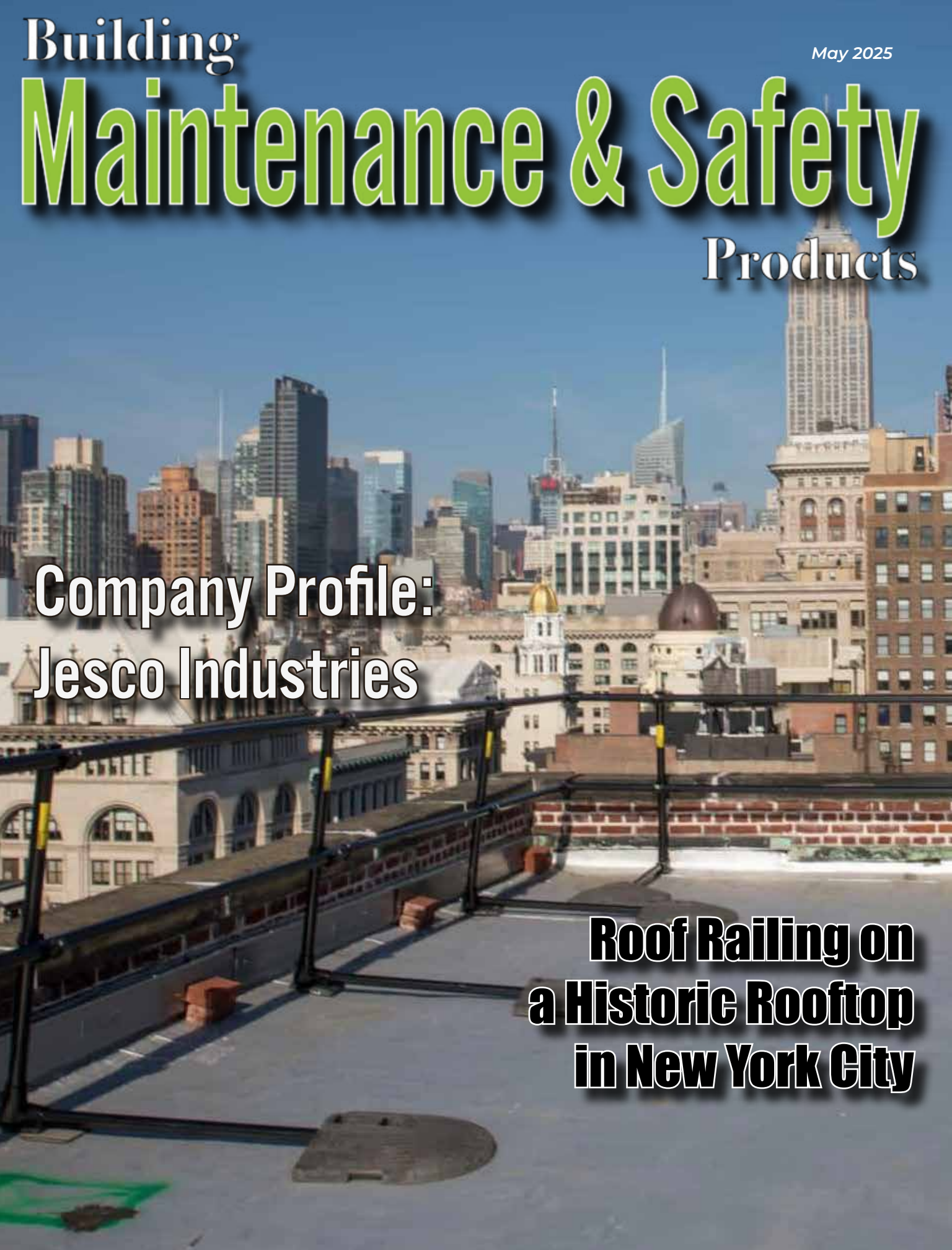
May 2025

Maintenance & Safety

Products

**Company Profile:
Jesco Industries**

**Roof Railing on
a Historic Rooftop
in New York City**



LONE WORKER PROTECTION
FALL PROTECTION
SUSPENSION TRAUMA PREVENTION



SECURE 1/2 MILE
LINE-OF-SIGHT



ASSIGNED MONITORING ATTENDANTS

- Grace Web Portal Dashboard
- Custom Check-In Schedule
- TEXT/Email Notification
- Receive a GPS Map Link
- Check-In System



LEARN MORE



GRACE GATEWAYS

- Iridium Satellite/Cellular
- Mobile or Portable Worksite Models
- SALTI™ System Loop Test Indicator
- Supports up to 20 Grace Pendants



WORKFORCE® LONE WORKER PENDANT

- Fall Detection
- Manual Panic Button
- Motion Detection
- GPS Location



jESCOHYDRATILT™ DUMPERS



HYDRAULICALLY CONTROLLED HOPPERS

These units are ideal where control of the quantity of material dumped or the rate of discharge is critical. They operate off the hydraulic system of your forklift and come complete with male quick-disconnect hoses for easy attachment to the forklift.

jESCO® PARTITIONS



DIAMOND WIRE MESH ENCLOSURES

Send us the footprint of your project and allow our engineers to assist you on your next project!

Division 10 22 13.



CONVERT YOUR FORKLIFT INTO A WORK PLATFORM!

Available in 40", 72", 96", and 120" lengths.

jESCO® WORK PLATFORM



jESCOGARD®

PROTECTIVE GUARD RAILING

These versatile guards act as both a visual and physical barrier to help protect people and property such as aisles, docks, conveyors and other equipment. Bolted rails are designed and tested to stop a 10,000 lbs load impacting at 4 mph from breaking through. Lift-out rails shown. All hardware is included.



Call 800-529-6697
Visit www.JescoOnline.com

jESCO
— Since 1932 —[®]

Jesco Industries, Inc.
Ph: 517-542-2903 Fax: 517-542-2501
PO Box 388 Litchfield, MI 49252-0388

- PG 4 | Company Profile: Jesco Industries
- PG 8 | Roof Railing on a Historic Rooftop in New York City
- PG 14 | Ad Index



Building Maintenance & Safety Products

Vol. 25 Issue 5

PRESIDENT

Glen Hobson
205-441-5591
glen@handfmedia.net

ASSOCIATE PUBLISHER

Steven Goodwin
205-624-2181
steve@handfmedia.net

ADMINISTRATIVE DIRECTOR

Steven Hobson
steven@handfmedia.net

EDITOR

Brandon Greenhill
brandon@handfmedia.net

CREATIVE/ WEB DIRECTOR

Jacklyn Greenhill
jacklyn@handfmedia.net

The test tools you need - for the information you require.



From monitoring equipment, tools and test instruments to the need for on-going calibration requirements and the training to understand everything - there is no wonder the maintenance professional is overwhelmed. With the availability of new and upcoming technology, information overload can quickly set in when trying to put together the best maintenance solution. **That's where we come in.** EDE can demystify electrical testing programs, offer support, training programs and the high tech equipment to make your maintenance activities straight forward and motors and generators doing what they are supposed to do - run. We will help you **Find the Way.**



• 970/292-8207 • www.edeinst.com •

P.O. Box 1568 • Pelham, AL 35124
Phone: 205-441-5591 • Fax: 205-624-2181



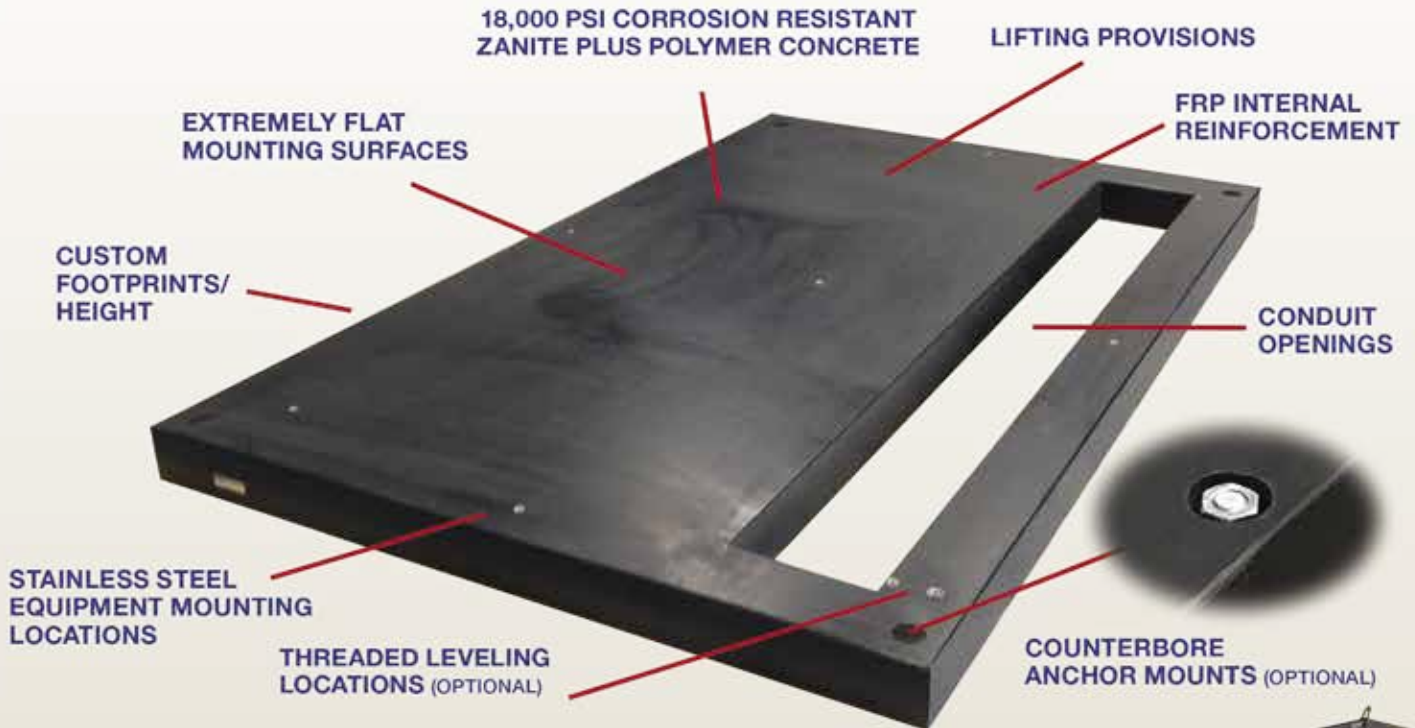
Building Maintenance & Safety Products™ is published twelve times a year on a monthly basis by HFG Media. *Building Maintenance & Safety Products™* is distributed free to qualified subscribers. Non-qualified subscription rates are \$57.00 per year in the U.S. and Canada and \$84.00 per year for foreign subscribers (surface mail). U.S. Postage paid at Birmingham, Alabama and additional mailing offices.

Building Maintenance & Safety Products™ is distributed to building maintenance and safety managers in manufacturing, apartment buildings, and school systems nationwide. Publisher is not liable for all content (including editorial and illustrations provided by advertisers) of advertisements published and does not accept responsibility for any claims made against the publisher. It is the advertiser's or agency's responsibility to obtain appropriate releases on any item or individuals pictured in an advertisement. Reproduction of this magazine in whole or in part is prohibited without prior written permission from the publisher.

POSTMASTER: Send address changes to
HFG Media, Inc. P.O. Box 1568
Pelham, AL 35124
PRINTED IN THE USA

Made to order precast polymer HOUSEKEEPING PADS

ZANITE[®] PLUS POLYMER COMPOSITE
A base you can build on.



ADVANTAGES OF POXYBASE[®] PADS

Outperforms

traditional concrete

Quick Installation

no waiting for concrete to cure

Labor Saving

no forms or pouring field materials

Mounting

stainless steel inserts for equipment and floor anchors

Flexible Designs

built to exact size specifications including conduit openings

Built to Last

corrosion resistant and extremely durable (seismic ready)

Quick Delivery

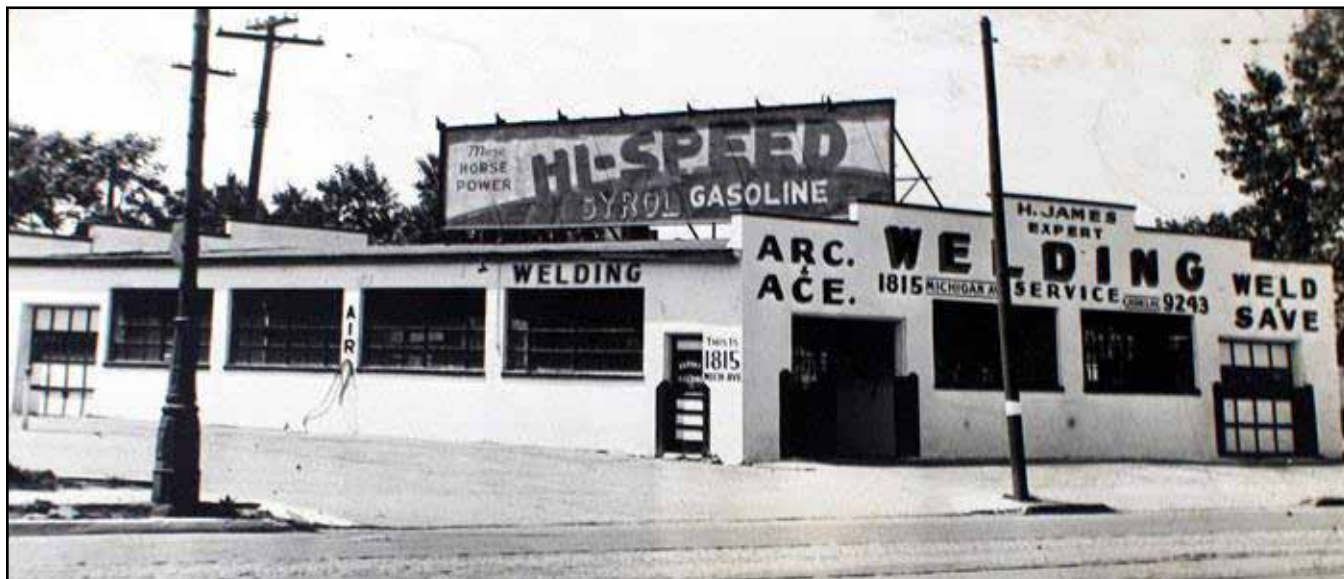
with limited colors available



basetek.com **877-712-2273** info@basetek.com

BASETEK
L L C

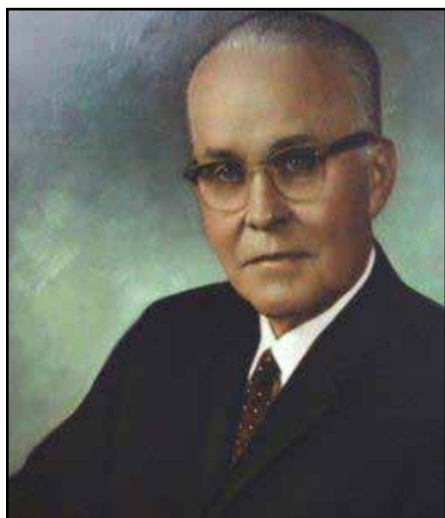
Built to last
and outperform. **We guarantee it.**



The History of Jesco Industries

Our company has endured and thrived for three generations. We like to credit this to our ability to listen to clients to discover real-world solutions. As a metal fabrication company, we pride ourselves on offering excellent quality products and customer service. Our specialty is custom fabrication and material handling equipment.

Continue reading to learn about our legacy and how the company has changed hands over the years.



Our Founder, Herbert James Sr.

Herbert James Sr. founded James Welding in 1932 on the corner of 14th and Ash streets in Detroit. For those who still remember, it was near what used to be Tiger Stadium. It wouldn't be until later that the company name would change to Jesco Industries, Inc.

When Herbert was no longer able to run the business, he passed it onto his sons. The brothers worked in many areas of the fabrication company, including sales and manufacturing. Over time, two of the brothers left the company to pursue different career paths from custom fabrication.

Find. Fix. Fast.



- ✔ Busway & Plugs
- ✔ Circuit Breakers
- ✔ Fuses
- ✔ Motor Control Centers
- ✔ Panelboards
- ✔ Safety Switches
- ✔ Switchgear
- ✔ Transformers

If we don't have what
you're looking for,
we find it.

GET 10% OFF
YOUR FIRST ONLINE ORDER

With code

ELECUR10

**Home of Thousands of Transformers,
Breakers, Switches, Bus Plugs,
Circuit Breakers and Motor Controls.**



250,000⁺ of
inventory



Every product
certified



Quick Ship
Fast lead-time

EMSCO stocks obsolete, reclaimed, and
hard to find electrical components.

www.EMSCOMN.com



**24-HOUR
HOTLINE**

Get what you need, when
you need it.

CONTACT US

800.328.1842

24-Hour Emergency Line



The Second Generation, Herbert James Jr.

Herbert James Jr. was the second generation to take over the family business of custom fabrication and material handling equipment.

He was also the one who moved our company in 1973 to our present location in Hillsdale County. This move allowed us to grow into the metal fabrication company we are today.

Our Current Leader, Bonny Desjardin

In 2005, Bonny Desjardin became the third generation and first woman to run the company. We're proud of our certification as a Women's Business Enterprise (WBE). This means that our company is at least 51% owned and controlled by one or more women.



Being a WBE gives us access to WBENC (Women's Business Enterprise National Council) Corporate Members. We also have access to a few local, state, and federal governmental agencies. Having these partnerships puts us above the competition as a custom metal fabrication company.

Our current facility has 90,000 square feet of manufacturing floor space! We also have over 40 skilled workers to meet the needs of our customers. And we're still growing!

Today, we're affiliated with the American Welding Society, National Association of Manufacturers, Hillsdale County Economic Development Partnership, and other professional organizations.

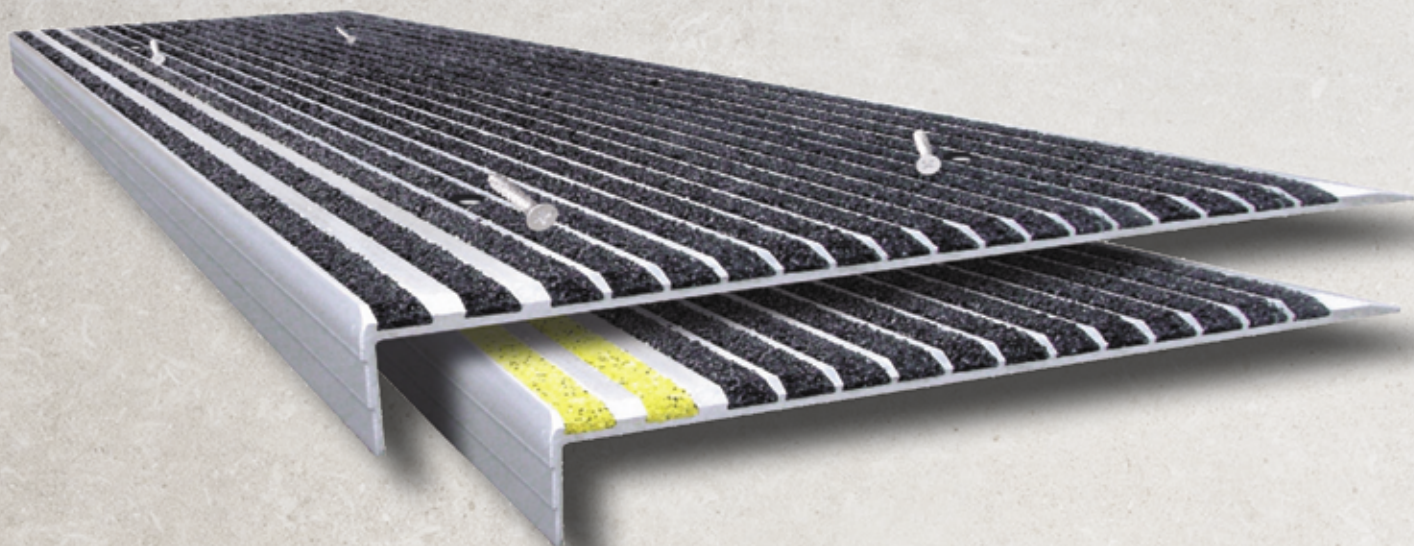
www.jescoonline.com •

Worn, Slippery, or Damaged Stairs?

Renovate with

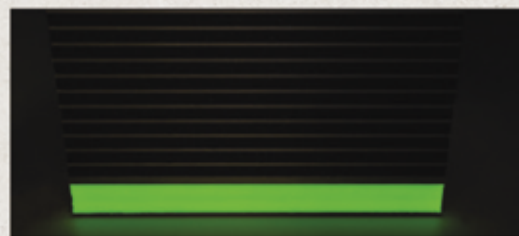
STAIRMASTER®

Anti-Slip Stair Treads



#1 in Egress Safety for Over 100 Years!

- Low cost renovation
- Excellent anti-slip protection
- Withstands heavy traffic
- For indoor or outdoor use
- Quick and easy installation on any existing stair



Also available in NITEGLOW™



**PROUDLY MADE
IN THE USA**

Specify Wooster

"Make Every Step a Safe One"

1.800.321.4936

www.woosterproducts.com

sales@wooster-products.com



Roof Railing on a Historic Rooftop in New York City

After a historic building in NYC was cited with multiple code violations by the city, Flag Waterproofing & Restoration reached out to Simplified Safety for help choosing the right perimeter guardrail to secure the building and become compliant.

Challenge

Historical building needed to become compliant with perimeter guardrail without drilling holes in the roof.

Solution

KeeGuard's counter-weight, non-penetrating design provides ultimate strength and permanent protection without damaging the roof.

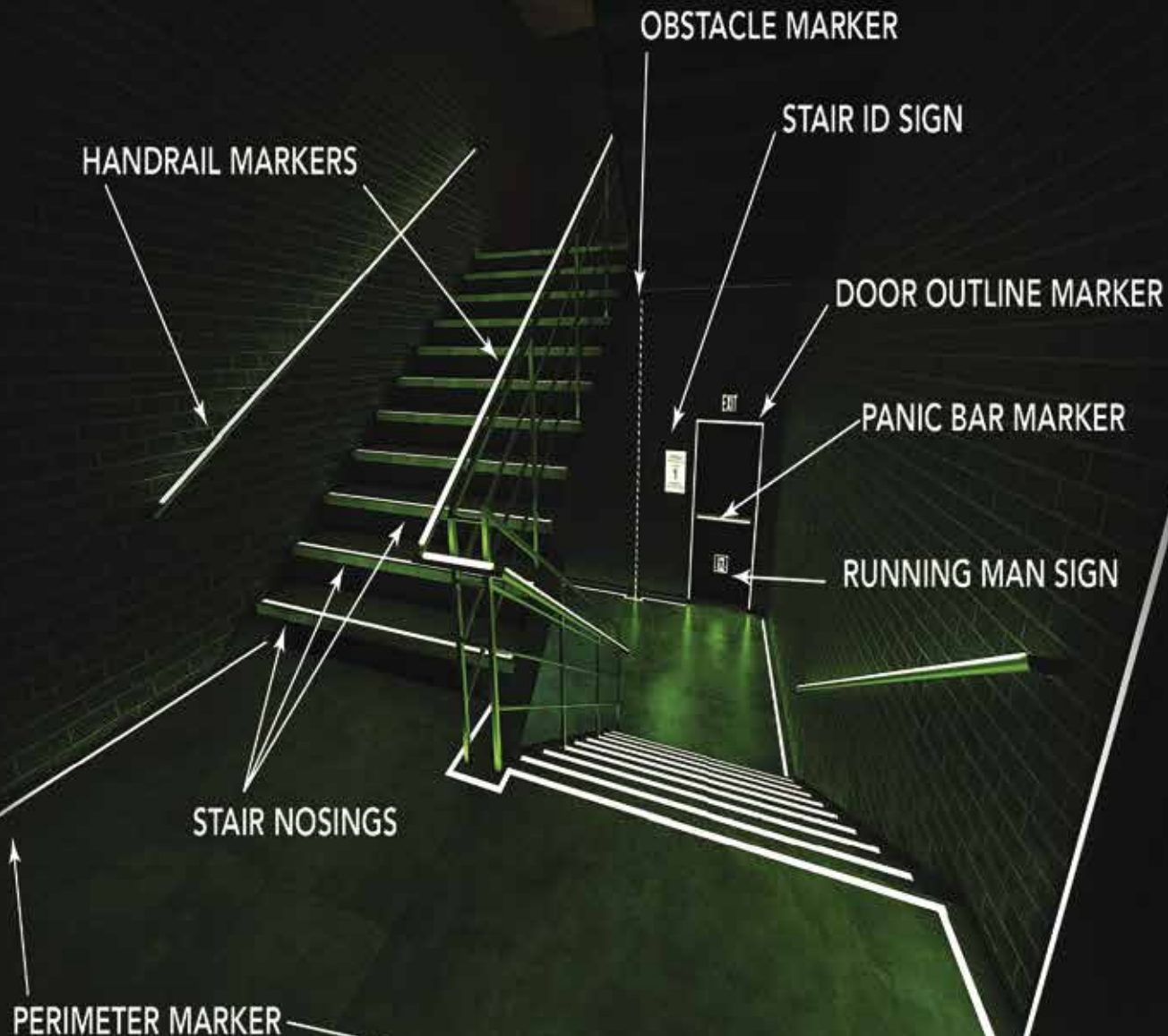
Results

Full perimeter guardrail was installed easily protecting all employees who accessed the roof.

Safe-T-Nose®

LEAVE NO DOUBT • THIS WAY OUT • EXIT SAFELY

SAFETNOSE.COM • 1-855-723-6673



IFC/IBC REQUIRED EGRESS MARKINGS AND SIGNS



The Challenge

Due to the age and design of the building, mounting a permanently welded guardrail to the underlying roof structure would have been extremely difficult, costly, and time-consuming. It would require putting holes in the roof membrane to find out where the guardrail could be attached, and then more openings would be necessary to secure the guardrail to the structure.

The aesthetics of the railing were important to them. Flag Waterproofing didn't want a system that would stick out like a sore thumb. Many guardrail systems only come in "safety yellow" and rely on powder coating as their only form of protection against corrosion.

In this case, a non-penetrating guardrail like KeeGuard was ideal because it eliminated the need to cut or drill holes into the roof and was able to be installed in a short amount of time.

FUSEBOX SAFETY MATS BY **RHINO**

Rhino Switchboard Mats For The "If" in "Life."

Extreme-Duty Series Class 4

1/2" thick Corrugated Surface

Test Voltage 50,000 VAC

Proof Test 40,000 VAC

Recommended 36,000 VAC



Fuse-box switchboard mats should be used in any area where Health and safety risk assessment shows a possibility of high-voltage shock. Easily carried to job or construction sites, Rhino Switchboard Mats provide a pro tempore electrically insulating mat

Safety Focused. Results Driven

Rubber-insulating gloves, insulated hand tools, and switchboard-insulating mats are vital components of a successful PPE system. All should be used in conjunction with engineering safeguards and associated work practices.

Quality You Can Count On

All are tested to ASTM D178/ANSI J6.7 specifications with certification printed on the back. Two sizes available 2ft X 3ft and 3ft X 3ft, and two gauges

Available at Electrical and Safety Supply Houses and Home Depot or Contact us at 713-228-5543 / Info@rhinomats.com

www.rhinoswitchboardmats.com

Heavy-Duty Series Class 2

1/4" thick Diamond Surface

Test Voltage 30,000 VAC

Proof Test 20,000 VAC

Recommended 17,000 VAC



From Basement to Roof Track Moisture Problems

Moisture Meters and Data Loggers

for all Applications in the Building Industry

Need a moisture meter? Buy Lignomat.
We make accurate, easy-to-use meters.



Scan QR Code or
call and talk to one
of our meter experts.

Lignomat, Portland, OR USA

800-227-2105

Lignomat
moisture measurement

"KeeGuard was simple, straightforward, and easy to install. I look forward to installing more systems in the future."

- Thomas Delio, Flag Waterproofing & Restoration



The Solution: KeeGuard Railing

KeeGuard railing provided the high quality and non-penetrating, permanent solution that Flag Waterproofing was looking for. The counter-weight, non-penetrating design provided ultimate strength and permanent protection without any roof damage making KeeGuard the optimal solution.

KeeGuard's standard galvanized finish is corrosion-resistant, does not require additional powder coating. KeeGuard's base fitting also allowed the railing to be set back away from the edge of the roof to reduce visibility from ground level and virtually eliminate it from the sight of pedestrians.

When Flag Waterproofing was on-site and started installing the railing system, they also noticed more variance in the slope of the rooftop than was initially specified. They could quickly

work around this thanks to KeeGuard's simple design and modular components by placing spacers between the base fittings and the rooftop's surface to make up the difference. In the end, KeeGuard was simple to install, and they were able to install each section in a matter of hours.

Results: Looking Back

After installation, a Fall Protection Specialist from the Simplified Safety team traveled to the site to certify the installation. The certification gave the building owner and Flag Waterproofing & Restoration the confidence and peace of mind knowing that the installation was done correctly and to the manufacturer's specifications. •

Get Cool!

Extend transformer life!

Increase transformer capacity up to 166%!

- expert technical assistance
- low sound levels
- energy-efficient motors
- large inventory
- one-piece cast aluminum blades
- galvanized or stainless steel guards

KRENZ-VENT
quality engineered, performance tested

p.o. box 187 germantown, wisconsin 53022 262.255.2318 www.krenzvent.com

SLIP AND FALL PREVENTION!

Since
1993

NEW!



TESTING DYNAMIC
COEFFICIENT OF
FRICTION (DCOF)
ASM 925

DIGITAL ASM 825A SLIP METER

WET AND DRY TESTING
CALIBRATES TO ANSI/NFSI B101.1

SAFE FLOORS MAY INCREASE PRODUCTIVITY
AND WILL CERTAINLY REDUCE LOSSES

SCOF RESULTS WITH AN EASY-TO-USE
PORTABLE FLOOR FRICTION TESTER

PH: 941-681-2431 | FAX: 941.681.2487

AMERICAN SLIP METER®

WWW.AMERICANSLIPMETER.COM



"PROP THAT DOOR OPEN WITH THE PROPPER"

Commercial, Residential, Industrial, Hotel/Motel & Deliveries

- Compact, Lightweight - Only 5 oz.
- Magnitized for Convenient Storage
- Easy To Open, Folds When Not In Use
- Safe, Secure Design, Never Slips Off Hinge



www.PopperStopper.com

MADE IN USA 

Ad Index

Company	Pg.	Website
American Slip Meter	13	www.americanslipmeter.com
Base Tek	3	www.basetek.com
EDE	2	www.edeinst.com
Emsco	5	www.emscomn.com
Grace Industries	IFC	www.graceconnectedsafety.com
Jesco	1	www.jesco.com
Krenz Vent	12	www.krenzvent.com
Lignomat	11	www.lignomat.com
Maddox	IBC	www.maddox.com
Propper Stopper	13	www.propperstopper.com
Rhino Switchboard Mats	11	www.rhinoswitchboardmats.com
Safe T Nose	9	www.safetnose.com
SP Products	BC	www.spproducts.com
Wooster Products	7	www.woosterproducts.com
Working Concepts	14	www.safeworker.com

Work shouldn't hurt.

SOFT KNEES®
No-Strap Knee Pads

STOP a LADDER®
Another fine **ergoKNEEL** product
www.ergokneel.com

NEW SIZE

888-456-3372 • www.safeworker.com • info@safeworker.com

Maddox is the one-stop shop for your transformer needs

Founded by a team of industry veterans focused exclusively on the transformer and transformer-related needs of industrial and commercial clients.



Sell

Maddox stocks and sells the highest quality transformers from dry types and padmounts to substations.

Rent

With thousands of units in stock, Maddox rents out transformers for the temporary power needs of customers across North America.

Repair

With shops on both coasts Maddox inspects, tests, and repairs transformers to ensure that they are in top working condition.

Purchase

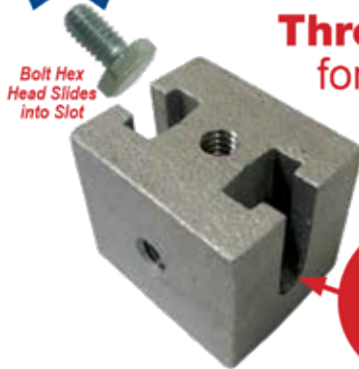
We offer a great price that includes handling all the transportation and environmental issue.

**Strong
ALMAG 535
Material**

4-Conduit Block Support From Only One Rod



PATENTED



Bolt Hex Head Slides into Slot

**Threaded Block OR Threadless Block
for Vertical Rod**



Bolt Hex Head Slides into Slot

For Vertical Rod 1/4" or 3/8"

Specify bolt size 1/4" or 3/8" for the conduit clamp

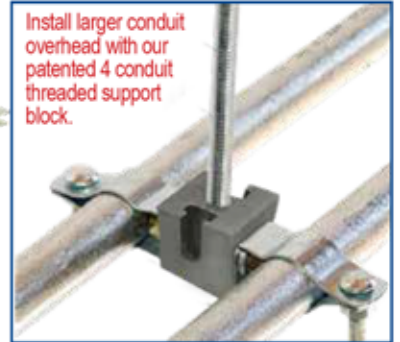
ST=(side thread) 1/4" or 3/8"

**Standard
Slots 1/4"
3/8" Available
Upon Request**

THREADED BLOCK	
1/4 inch rod =	Cat# TBT25-ST25
1/4 inch rod =	Cat# TBT25-ST38
3/8 inch rod =	Cat# TBT38-ST25
3/8 inch rod =	Cat# TBT38-ST38

NON-THREADED BLOCKS	
1/4 inch rod =	Cat# TBT25-NT-ST25
1/4 inch rod =	Cat# TBT25-NT-ST38
3/8 inch rod =	Cat# TBT38-NT-ST25
3/8 inch rod =	Cat# TBT38-NT-ST38

**Support
Up Thru 4
Conduits With
1 Support**



Install larger conduit overhead with our patented 4 conduit threaded support block.

**New
Block**

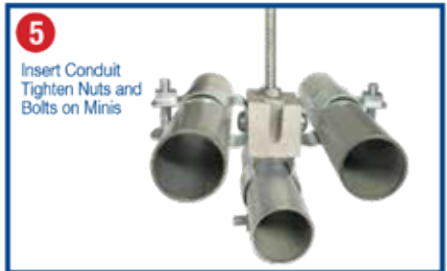
**AVAILABLE
SOON
For Vertical Rod
1/4" or 3/8"**



**4 threaded holes on
4 sides (no slots)
Specify bolt size 1/4" or 3/8"
required for the conduit clamp**

PATENTED

FAST & EASY TO INSTALL



Customer must satisfy all codes and owners' specifications.



**PATENT PENDING
PATENTED**



LABELS APPLY TO PRODUCTS ONLY WHERE SHOWN ABOVE

730 Pratt Boulevard • Elk Grove Village, IL 60007
P: (847) 593-8595 • F: (847) 593-8629 • Toll-free (800) 233-8595
E: info@spproducts.com • www.spproducts.com

IP19-20